

Datasheet for ABIN7169998
anti-SLC17A3 antibody (AA 1-125)



[Go to Product page](#)

2 Images

Overview

Quantity:	100 µg
Target:	SLC17A3
Binding Specificity:	AA 1-125
Reactivity:	Human
Host:	Rabbit
Clonality:	Polyclonal
Conjugate:	This SLC17A3 antibody is un-conjugated
Application:	ELISA, Immunohistochemistry (IHC), Immunofluorescence (IF)

Product Details

Immunogen:	Recombinant Human Sodium-dependent phosphate transport protein 4 protein (1-125AA)
Isotype:	IgG
Cross-Reactivity:	Human
Purification:	>95%, Protein G purified

Target Details

Target:	SLC17A3
Alternative Name:	SLC17A3 (SLC17A3 Products)
Background:	Background: Isoform 2: voltage-driven, multispecific, organic anion transporter able to transport para-aminohippurate (PAH), estrone sulfate, estradiol-17-beta-glucuronide, bumetanide, and

Target Details

ochratoxin A. Isoform 2 functions as urate efflux transporter on the apical side of renal proximal tubule and is likely to act as an exit path for organic anionic drugs as well as urate in vivo. May be involved in actively transporting phosphate into cells via Na(+) cotransport.

Aliases: SLC17A3 antibody, NPT4 antibody, Sodium-dependent phosphate transport protein 4 antibody, Na(+)/PI cotransporter 4 antibody, Sodium/phosphate cotransporter 4 antibody, Solute carrier family 17 member 3 antibody

UniProt: [O00476](#)

Application Details

Application Notes: Recommended dilution: IHC:1:20-1:200, IF:1:50-1:200,

Restrictions: For Research Use only

Handling

Format: Liquid

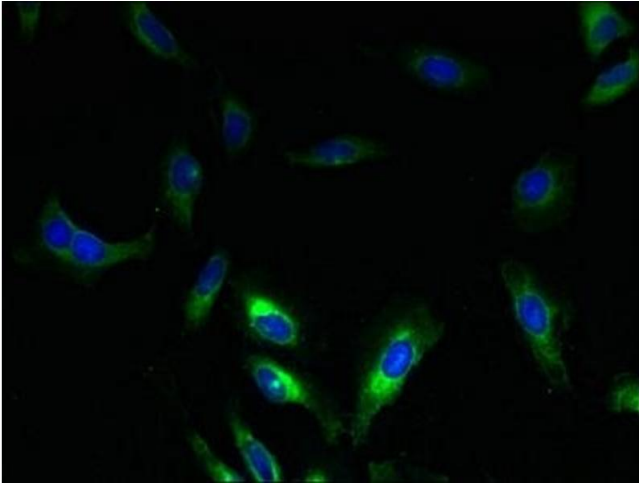
Buffer: Preservative: 0.03 % Proclin 300
Constituents: 50 % Glycerol, 0.01M PBS, PH 7.4

Preservative: ProClin

Precaution of Use: This product contains ProClin: a POISONOUS AND HAZARDOUS SUBSTANCE which should be handled by trained staff only.

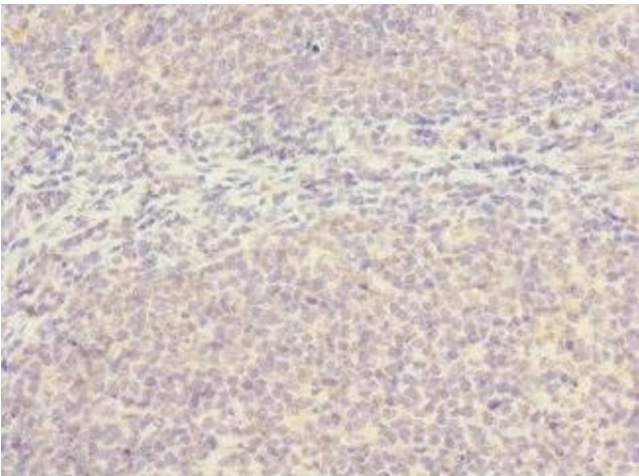
Storage: -20 °C,-80 °C

Storage Comment: Upon receipt, store at -20°C or -80°C. Avoid repeated freeze.



Immunofluorescence

Image 1. Immunofluorescent analysis of HeLa cells using ABIN7169998 at dilution of 1:100 and Alexa Fluor 488-conjugated AffiniPure Goat Anti-Rabbit IgG(H+L)



Immunohistochemistry

Image 2. Immunohistochemistry of paraffin-embedded human tonsil tissue using ABIN7169998 at dilution of 1:100