

Datasheet for ABIN7170002
anti-GLUT1 antibody (AA 263-458)[Go to Product page](#)

4 Images

Overview

Quantity:	100 µg
Target:	GLUT1 (SLC2A1)
Binding Specificity:	AA 263-458
Reactivity:	Human
Host:	Rabbit
Clonality:	Polyclonal
Conjugate:	This GLUT1 antibody is un-conjugated
Application:	Western Blotting (WB), Immunohistochemistry (IHC), ELISA, Immunofluorescence (IF)

Product Details

Immunogen:	Recombinant Human Sodium-dependent phosphate transporter 1 protein (263-458AA)
Isotype:	IgG
Cross-Reactivity:	Human
Purification:	>95%, Protein G purified

Target Details

Target:	GLUT1 (SLC2A1)
Alternative Name:	SLC2A1 (SLC2A1 Products)
Background:	Background: Sodium-phosphate symporter which plays a fundamental housekeeping role in phosphate transport, such as absorbing phosphate from interstitial fluid for normal cellular

Target Details

functions such as cellular metabolism, signal transduction, and nucleic acid and lipid synthesis. May play a role in extracellular matrix and cartilage calcification as well as in vascular calcification. May function as a retroviral receptor as it confers human cells susceptibility to infection to Gibbon Ape Leukemia Virus (GaLV), Simian sarcoma-associated virus (SSAV) and Feline leukemia virus subgroup B (FeLV-B) as well as 10A1 murine leukemia virus (10A1 MLV). Aliases: DKFZp686J2397 antibody, FLJ41426 antibody, Gibbon ape leukemia virus receptor 1 antibody, GLVR 1 antibody, GLVR-1 antibody, GLVR1 antibody, Leukemia virus receptor 1 homolog antibody, Phosphate transporter 1 antibody, PIT 1 antibody, PiT-1 antibody, PIT1 antibody, S20A1_HUMAN antibody, Slc20a1 antibody, Sodium dependent phosphate transporter 1 antibody, Sodium-dependent phosphate transporter 1 antibody, Solute carrier family 20 (phosphate transporter) member 1 antibody, Solute carrier family 20 member 1 antibody

UniProt: [Q8WUM9](#)

Pathways: [Sensory Perception of Sound](#), [Dicarboxylic Acid Transport](#), [Warburg Effect](#)

Application Details

Application Notes: Recommended dilution: WB:1:500-1:5000, IHC:1:20-1:200, IF:1:50-1:200,

Restrictions: For Research Use only

Handling

Format: Liquid

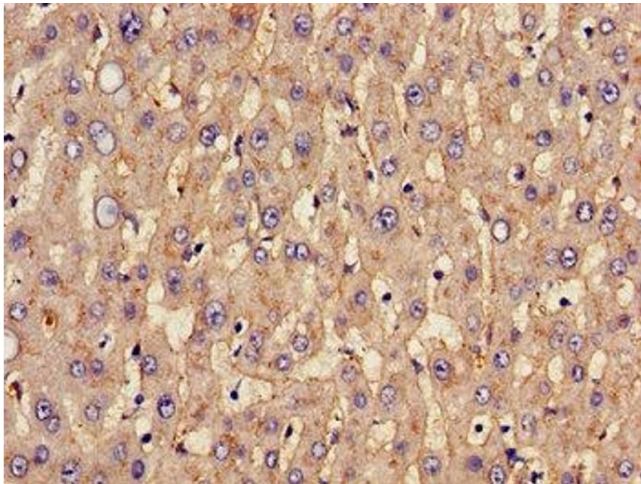
Buffer: Preservative: 0.03 % Proclin 300
Constituents: 50 % Glycerol, 0.01M PBS, pH 7.4

Preservative: ProClin

Precaution of Use: This product contains ProClin: a POISONOUS AND HAZARDOUS SUBSTANCE which should be handled by trained staff only.

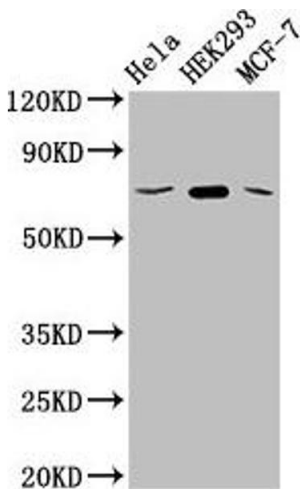
Storage: -20 °C, -80 °C

Storage Comment: Upon receipt, store at -20°C or -80°C. Avoid repeated freeze.



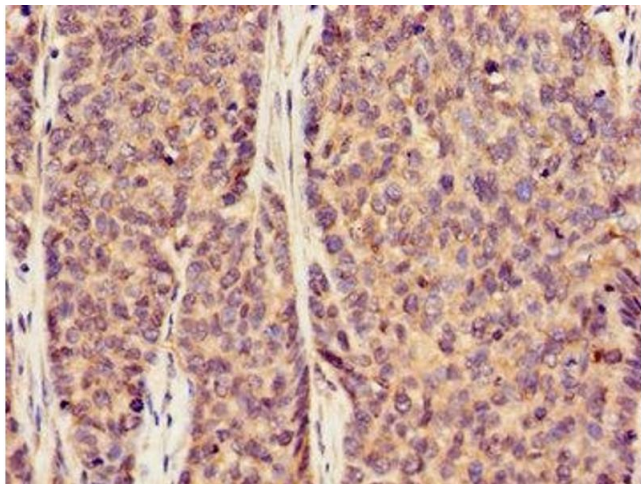
Immunohistochemistry

Image 1. Immunohistochemistry of paraffin-embedded human liver tissue using ABIN7170002 at dilution of 1:100



Western Blotting

Image 2. Western Blot Positive WB detected in: HeLa whole cell lysate, HEK293 whole cell lysate, MCF-7 whole cell lysate All lanes: SLC20A1 antibody at 2.5 µg/mL Secondary Goat polyclonal to rabbit IgG at 1/50000 dilution Predicted band size: 74 kDa Observed band size: 74 kDa



Immunohistochemistry

Image 3. Immunohistochemistry of paraffin-embedded human ovarian cancer using ABIN7170002 at dilution of 1:100

Please check the [product details page](#) for more images. Overall 4 images are available for ABIN7170002.