



[Go to Product page](#)

Datasheet for ABIN7170006
anti-SLC2A2 antibody (AA 235-485)

2 Images

Overview

Quantity:	100 µL
Target:	SLC2A2
Binding Specificity:	AA 235-485
Reactivity:	Human
Host:	Rabbit
Clonality:	Polyclonal
Conjugate:	This SLC2A2 antibody is un-conjugated
Application:	ELISA, Immunohistochemistry (IHC)

Product Details

Immunogen:	Recombinant Human Sodium-dependent phosphate transporter 2 protein (235-485AA)
Isotype:	IgG
Cross-Reactivity:	Human
Purification:	Antigen Affinity Purified

Target Details

Target:	SLC2A2
Alternative Name:	SLC2A2 (SLC2A2 Products)
Background:	Background: Sodium-phosphate symporter which seems to play a fundamental housekeeping role in phosphate transport by absorbing phosphate from interstitial fluid for normal cellular

Target Details

functions such as cellular metabolism, signal transduction, and nucleic acid and lipid synthesis. In vitro, sodium-dependent phosphate uptake is not significantly affected by acidic and alkaline conditions, however sodium-independent phosphate uptake occurs at acidic conditions. May play a role in extracellular matrix, cartilage and vascular calcification. Functions as a retroviral receptor and confers human cells susceptibility to infection to amphotropic murine leukemia virus (A-MuLV), 10A1 murine leukemia virus (10A1 MLV) and some feline leukemia virus subgroup B (FeLV-B) variants.

Aliases: Gibbon ape leukemia virus receptor 2 antibody, Gibbon leukemia virus receptor 2 antibody, GLVR 2 antibody, GLVR-2 antibody, GLVR2 antibody, hPit2 antibody, IBGC3 antibody, MLVAR antibody, Murine leukemia virus amphotropic receptor antibody, murine leukemia virus, amphotropic, receptor for antibody, Phosphate transporter 2 antibody, PIT 2 antibody, PiT-2 antibody, Pit2 antibody, RAM1 antibody, S20A2_HUMAN antibody, SLC20A2 antibody, Sodium-dependent phosphate transporter 2 antibody, Solute carrier family 20 (phosphate transporter) member 2 antibody, solute carrier family 20 (phosphate transporter), member 2 antibody, Solute carrier family 20 member 2 antibody

UniProt: [Q08357](#)

Pathways: [Warburg Effect](#)

Application Details

Application Notes: Recommended dilution: IHC:1:20-1:200,

Restrictions: For Research Use only

Handling

Format: Liquid

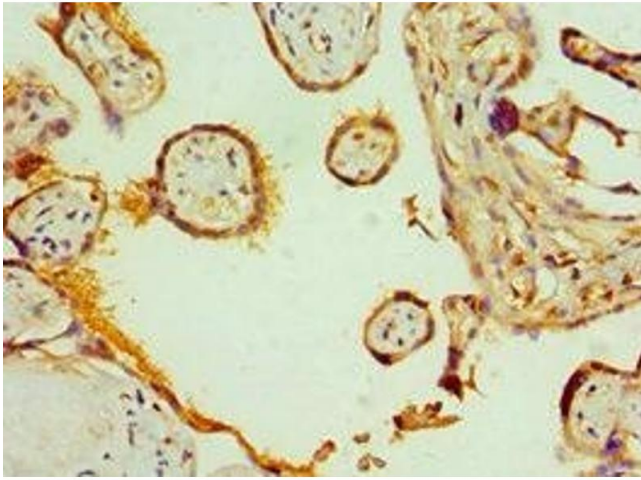
Buffer: PBS with 0.02 % sodium azide, 50 % glycerol, pH 7.3.

Preservative: Sodium azide

Precaution of Use: This product contains Sodium azide: a POISONOUS AND HAZARDOUS SUBSTANCE which should be handled by trained staff only.

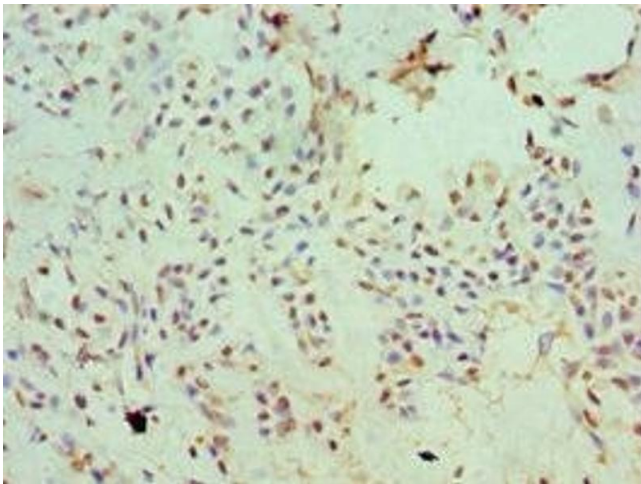
Storage: -20 °C,-80 °C

Storage Comment: Upon receipt, store at -20°C or -80°C. Avoid repeated freeze.



Immunohistochemistry

Image 1. Immunohistochemistry of paraffin-embedded human placenta tissue using ABIN7170006 at dilution of 1:100



Immunohistochemistry

Image 2. Immunohistochemistry of paraffin-embedded human breast cancer using ABIN7170006 at dilution of 1:100