

Datasheet for ABIN7170007
anti-SLC6A7 antibody (AA 557-636)



[Go to Product page](#)

1 Image

Overview

Quantity:	100 µg
Target:	SLC6A7
Binding Specificity:	AA 557-636
Reactivity:	Human
Host:	Rabbit
Clonality:	Polyclonal
Conjugate:	This SLC6A7 antibody is un-conjugated
Application:	ELISA, Immunohistochemistry (IHC)

Product Details

Immunogen:	Recombinant Human Sodium-dependent proline transporter protein (557-636AA)
Isotype:	IgG
Cross-Reactivity:	Human
Purification:	>95%, Protein G purified

Target Details

Target:	SLC6A7
Alternative Name:	SLC6A7 (SLC6A7 Products)
Background:	Background: Terminates the action of proline by its high affinity sodium-dependent reuptake into presynaptic terminals.

Target Details

Aliases: solute carrier family 6 (neurotransmitter transporter, L-proline), member 7 antibody, brain-specific L-proline transporter antibody, L-proline transporter, brain-specific antibody, PROT antibody, SC6A7_HUMAN antibody, Slc6a7 antibody, Sodium-dependent proline transporter antibody, solute carrier family 6 (neurotransmitter transporter), member 7 antibody, Solute carrier family 6 member 7 antibody

UniProt: [Q99884](#)

Application Details

Application Notes: Recommended dilution: IHC:1:20-1:200,

Restrictions: For Research Use only

Handling

Format: Liquid

Buffer: Preservative: 0.03 % Proclin 300
Constituents: 50 % Glycerol, 0.01M PBS, PH 7.4

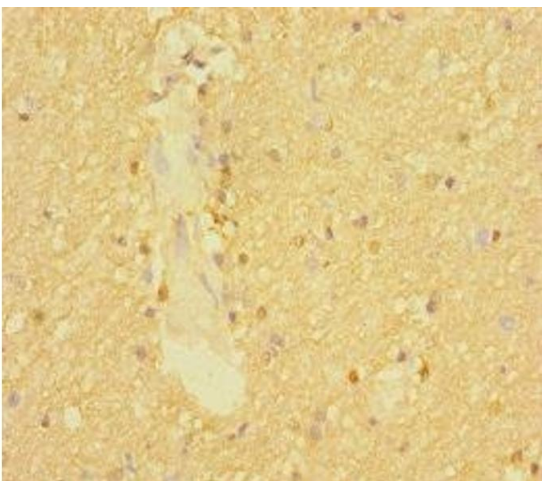
Preservative: ProClin

Precaution of Use: This product contains ProClin: a POISONOUS AND HAZARDOUS SUBSTANCE which should be handled by trained staff only.

Storage: -20 °C,-80 °C

Storage Comment: Upon receipt, store at -20°C or -80°C. Avoid repeated freeze.

Images



Immunohistochemistry

Image 1. Immunohistochemistry of paraffin-embedded human brain tissue using ABIN7170007 at dilution of 1:100