

Datasheet for ABIN7170023  
**anti-SLC9A1 antibody (AA 36-102)**[Go to Product page](#)

## 3 Images

## Overview

Quantity:	100 µg
Target:	SLC9A1
Binding Specificity:	AA 36-102
Reactivity:	Human
Host:	Rabbit
Clonality:	Polyclonal
Conjugate:	This SLC9A1 antibody is un-conjugated
Application:	Western Blotting (WB), ELISA, Immunohistochemistry (IHC), Immunofluorescence (IF)

## Product Details

Immunogen:	Recombinant Human Sodium/hydrogen exchanger 1 protein (36-102AA)
Isotype:	IgG
Cross-Reactivity:	Human, Mouse
Purification:	>95%, Protein G purified

## Target Details

Target:	SLC9A1
Alternative Name:	SLC9A1 ( <a href="#">SLC9A1 Products</a> )
Background:	Background: Involved in pH regulation to eliminate acids generated by active metabolism or to counter adverse environmental conditions. Major proton extruding system driven by the inward

## Target Details

sodium ion chemical gradient. Plays an important role in signal transduction.

Aliases: amiloride-sensitive antibody, APNH antibody, APNH1 antibody, FLJ42224 antibody, Na Li countertransporter antibody, Na(+)/H(+) antiporter antibody, Na(+)/H(+) exchanger 1 antibody, Na+ H+ antiporter amiloride-sensitive antibody, Na+ H+ antiporter antibody, Na+ H+ exchanger 1 antibody, NHE-1 antibody, NHE1 antibody, OTTHUMP00000004468 antibody, SL9A1\_HUMAN antibody, SLC9A1 antibody, Sodium / Hydrogen Exchanger 1 antibody, Sodium hydrogen exchanger 1 antibody, Sodium/hydrogen exchanger 1 antibody, solute carrier family 9 antibody, Solute carrier family 9 member 1 antibody, Solute carrier family 9 sodium hydrogen exchanger isoform 1 antiporter Na+ H+ amiloride sensitive antibody, Solute carrier family 9 subfamily A (NHE1 cation proton antiporter 1) member 1 antibody, Solute carrier family 9 subfamily A member 1 antibody

UniProt: [P19634](#)

Pathways: [Glycosaminoglycan Metabolic Process](#), [Proton Transport](#)

## Application Details

Application Notes: Recommended dilution: WB:1:2000-1:5000, IHC:1:20-1:200, IF:1:50-1:200,

Restrictions: For Research Use only

## Handling

Format: Liquid

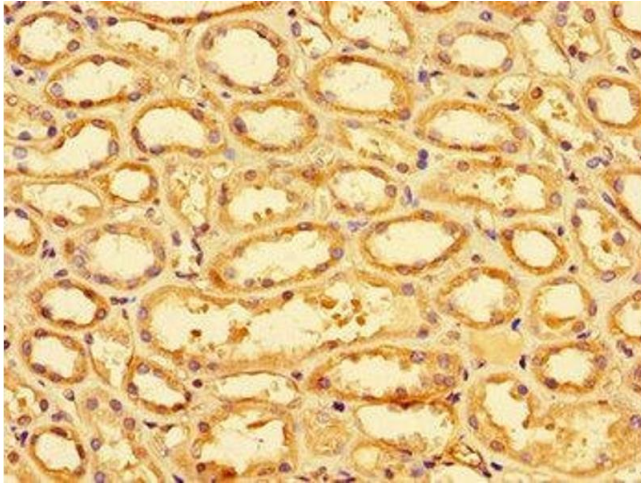
Buffer: Preservative: 0.03 % Proclin 300  
Constituents: 50 % Glycerol, 0.01M PBS, PH 7.4

Preservative: ProClin

Precaution of Use: This product contains ProClin: a POISONOUS AND HAZARDOUS SUBSTANCE which should be handled by trained staff only.

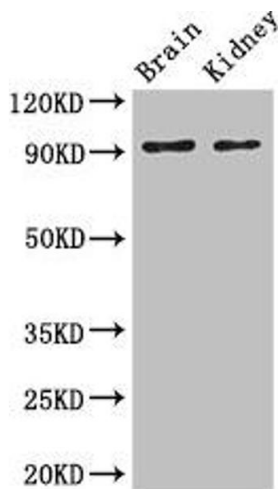
Storage: -20 °C,-80 °C

Storage Comment: Upon receipt, store at -20°C or -80°C. Avoid repeated freeze.



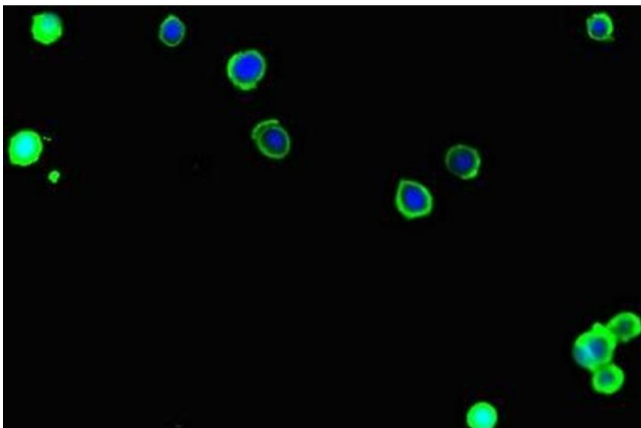
### Immunohistochemistry

**Image 1.** Immunohistochemistry of paraffin-embedded human kidney tissue using ABIN7170023 at dilution of 1:100



### Western Blotting

**Image 2.** Western Blot Positive WB detected in: Mouse brain tissue, Mouse kidney tissue All lanes: SLC9A1 antibody at 3 µg/mL Secondary Goat polyclonal to rabbit IgG at 1/50000 dilution Predicted band size: 91, 62 kDa Observed band size: 91 kDa



### Immunofluorescence

**Image 3.** Immunofluorescent analysis of MCF-7 cells using ABIN7170023 at dilution of 1:100 and Alexa Fluor 488-conjugated AffiniPure Goat Anti-Rabbit IgG(H+L)