



[Go to Product page](#)

Datasheet for ABIN7170044
anti-ATP1B1 antibody (AA 64-241)

4 Images

Overview

Quantity:	100 µg
Target:	ATP1B1
Binding Specificity:	AA 64-241
Reactivity:	Human
Host:	Rabbit
Clonality:	Polyclonal
Conjugate:	This ATP1B1 antibody is un-conjugated
Application:	Western Blotting (WB), ELISA, Immunohistochemistry (IHC), Immunofluorescence (IF)

Product Details

Immunogen:	Recombinant Human Sodium/potassium-transporting ATPase subunit beta-1 protein (64-241AA)
Isotype:	IgG
Cross-Reactivity:	Human, Mouse, Rat
Purification:	>95%, Protein G purified

Target Details

Target:	ATP1B1
Alternative Name:	ATP1B1 (ATP1B1 Products)
Background:	Background: This is the non-catalytic component of the active enzyme, which catalyzes the

Target Details

hydrolysis of ATP coupled with the exchange of Na(+) and K(+) ions across the plasma membrane. The beta subunit regulates, through assembly of alpha/beta heterodimers, the number of sodium pumps transported to the plasma membrane.

Aliases: Adenosinetriphosphatase antibody, AT1B1_HUMAN antibody, ATP 1B antibody, ATP1B antibody, ATP1B1 antibody, ATPase Na+/K+ transporting beta 1 polypeptide antibody, Atpb 1 antibody, ATPBS antibody, Beta 1 subunit of Na(+) K(+) ATPase antibody, Na K ATPase beta 1 polypeptide antibody, Na+/K+ ATPase beta 1 subunit antibody, Sodium/potassium dependent ATPase beta 1 subunit antibody, Sodium/potassium transporting ATPase beta 1 chain antibody, Sodium/potassium transporting ATPase subunit beta 1 antibody, Sodium/potassium-dependent ATPase subunit beta-1 antibody, Sodium/potassium-transporting ATPase subunit beta-1 antibody

UniProt: [P05026](#)

Pathways: [Thyroid Hormone Synthesis](#), [Ribonucleoside Biosynthetic Process](#), [SARS-CoV-2 Protein Interactome](#)

Application Details

Application Notes: Recommended dilution: WB:1:500-1:5000, IHC:1:20-1:200, IF:1:50-1:200,

Restrictions: For Research Use only

Handling

Format: Liquid

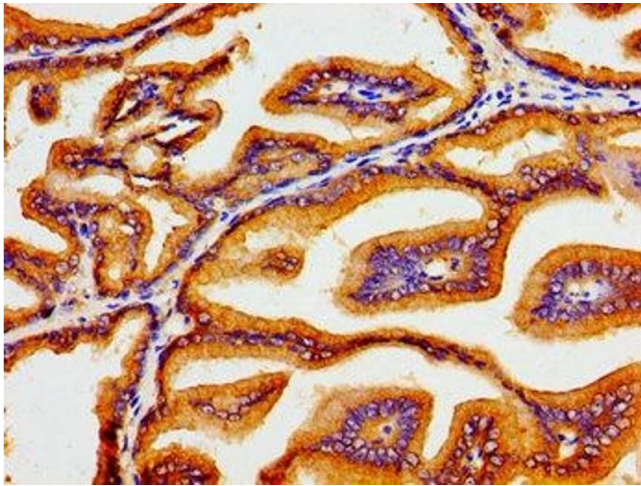
Buffer: Preservative: 0.03 % Proclin 300
Constituents: 50 % Glycerol, 0.01M PBS, pH 7.4

Preservative: ProClin

Precaution of Use: This product contains ProClin: a POISONOUS AND HAZARDOUS SUBSTANCE which should be handled by trained staff only.

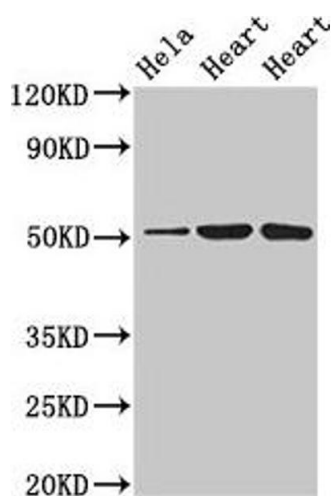
Storage: -20 °C,-80 °C

Storage Comment: Upon receipt, store at -20°C or -80°C. Avoid repeated freeze.



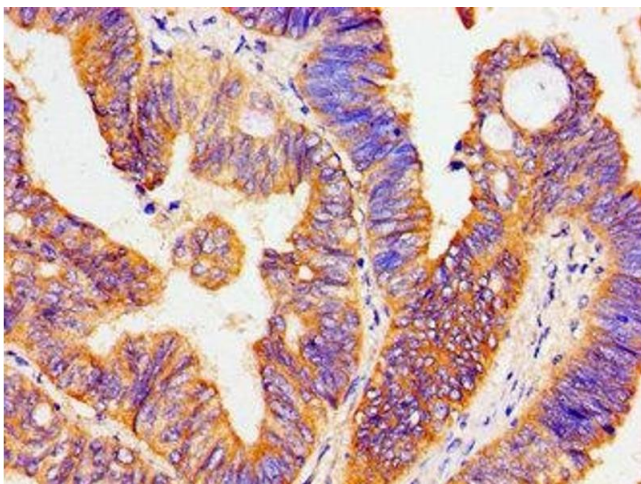
Immunohistochemistry

Image 1. Immunohistochemistry of paraffin-embedded human prostate tissue using ABIN7170044 at dilution of 1:100



Western Blotting

Image 2. Western Blot Positive WB detected in: HeLa whole cell lysate, Rat heart tissue, Mouse heart tissue All lanes: ATP1B1 antibody at 3 µg/mL Secondary Goat polyclonal to rabbit IgG at 1/50000 dilution Predicted band size: 36, 35 kDa Observed band size: 52 kDa



Immunohistochemistry

Image 3. Immunohistochemistry of paraffin-embedded human colon cancer using ABIN7170044 at dilution of 1:100

Please check the [product details page](#) for more images. Overall 4 images are available for ABIN7170044.