

Datasheet for ABIN7170057
anti-SLC24A1 antibody (AA 330-452)[Go to Product page](#)

1 Image

Overview

Quantity:	100 µL
Target:	SLC24A1
Binding Specificity:	AA 330-452
Reactivity:	Human
Host:	Rabbit
Clonality:	Polyclonal
Conjugate:	This SLC24A1 antibody is un-conjugated
Application:	ELISA, Immunohistochemistry (IHC)

Product Details

Immunogen:	Recombinant Human Sodium/potassium/calcium exchanger 1 protein (330-452AA)
Isotype:	IgG
Cross-Reactivity:	Human
Purification:	Antigen Affinity Purified

Target Details

Target:	SLC24A1
Alternative Name:	SLC24A1 (SLC24A1 Products)
Background:	Background: Critical component of the visual transduction cascade, controlling the calcium concentration of outer segments during light and darkness. Light causes a rapid lowering of

Target Details

cytosolic free calcium in the outer segment of both retinal rod and cone photoreceptors and the light-induced lowering of calcium is caused by extrusion via this protein which plays a key role in the process of light adaptation. Transports 1 Ca(2+) and 1 K(+) in exchange for 4 Na(+).

Aliases: CSNB1D antibody, HsT17412 antibody, KIAA0702 antibody, Na(+)/K(+)/Ca(2+) exchange protein 1 antibody, Na(+)/K(+)/Ca(2+)-exchange protein 1 antibody, NCKX antibody, NCKX1 antibody, NCKX1_HUMAN antibody, Retinal rod Na Ca+K exchanger antibody, Retinal rod Na+/Ca+/K+ exchanger antibody, Retinal rod Na-Ca+K exchanger antibody, RODX antibody, Slc24a1 antibody, Sodium/potassium/calcium exchanger 1 antibody, Solute carrier family 24 (sodium/potassium/calcium exchanger) member 1 antibody, Solute carrier family 24 member 1 antibody

UniProt: [O60721](#)

Pathways: [Phototransduction](#)

Application Details

Application Notes: Recommended dilution: IHC:1:20-1:200,

Restrictions: For Research Use only

Handling

Format: Liquid

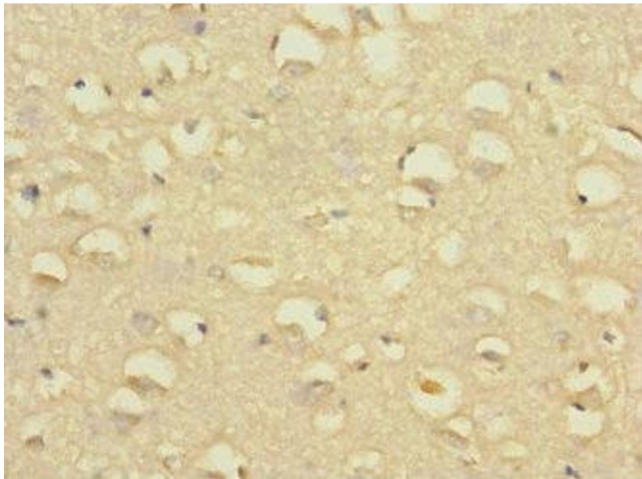
Buffer: PBS with 0.02 % sodium azide, 50 % glycerol, pH 7.3.

Preservative: Sodium azide

Precaution of Use: This product contains Sodium azide: a POISONOUS AND HAZARDOUS SUBSTANCE which should be handled by trained staff only.

Storage: -20 °C,-80 °C

Storage Comment: Upon receipt, store at -20°C or -80°C. Avoid repeated freeze.



Immunohistochemistry

Image 1. Immunohistochemistry of paraffin-embedded human brain tissue using ABIN7170057 at dilution of 1:100