



[Go to Product page](#)

Datasheet for ABIN7170071

anti-SLC12A2 antibody (AA 110-282)

4 Images

Overview

Quantity:	100 µg
Target:	SLC12A2
Binding Specificity:	AA 110-282
Reactivity:	Human
Host:	Rabbit
Clonality:	Polyclonal
Conjugate:	This SLC12A2 antibody is un-conjugated
Application:	Western Blotting (WB), ELISA, Immunohistochemistry (IHC), Immunofluorescence (IF)

Product Details

Immunogen:	Recombinant Human Solute carrier family 12 member 2 protein (110-282AA)
Isotype:	IgG
Cross-Reactivity:	Human, Mouse
Purification:	>95%, Protein G purified

Target Details

Target:	SLC12A2
Alternative Name:	SLC12A2 (SLC12A2 Products)
Background:	Background: Electrically silent transporter system. Mediates sodium and chloride reabsorption. Plays a vital role in the regulation of ionic balance and cell volume.

Target Details

Aliases: Basolateral Na-K-Cl symporter antibody, BSC antibody, BSC2 antibody, Bumetanide-sensitive sodium-(potassium)-chloride cotransporter 1 antibody, mBSC2 antibody, MGC104233 antibody, NKCC1 antibody, PPP1R141 antibody, Protein phosphatase 1, regulatory subunit 141 antibody, S12A2_HUMAN antibody, Slc12a2 antibody, sodium-potassium-chloride cotransporter 1 antibody, Solute carrier family 12 (sodium/potassium/chloride transporter), member 2 antibody, solute carrier family 12 (sodium/potassium/chloride transporters) member 2 antibody, Solute carrier family 12 member 2 antibody, sy-ns antibody

UniProt: [P55011](#)

Pathways: [Sensory Perception of Sound](#)

Application Details

Application Notes: Recommended dilution: WB:1:1000-1:5000, IHC:1:200-1:500, IF:1:50-1:200,

Restrictions: For Research Use only

Handling

Format: Liquid

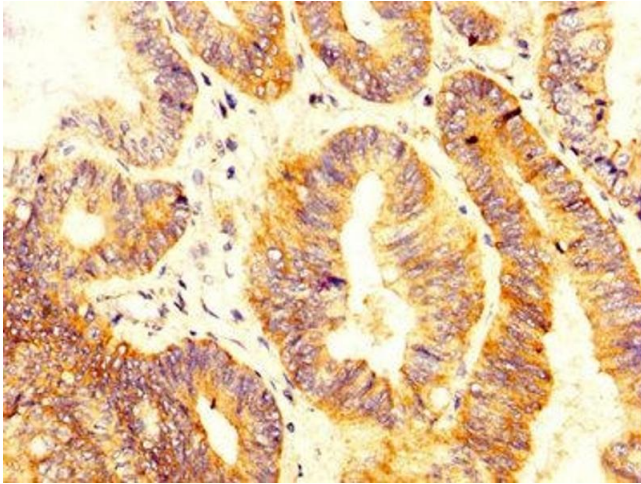
Buffer: Preservative: 0.03 % Proclin 300
Constituents: 50 % Glycerol, 0.01M PBS, pH 7.4

Preservative: ProClin

Precaution of Use: This product contains ProClin: a POISONOUS AND HAZARDOUS SUBSTANCE which should be handled by trained staff only.

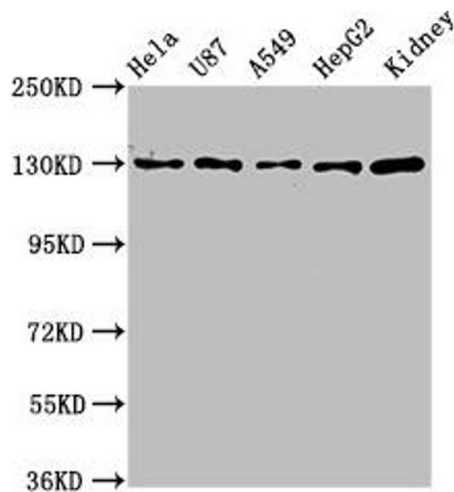
Storage: -20 °C,-80 °C

Storage Comment: Upon receipt, store at -20°C or -80°C. Avoid repeated freeze.



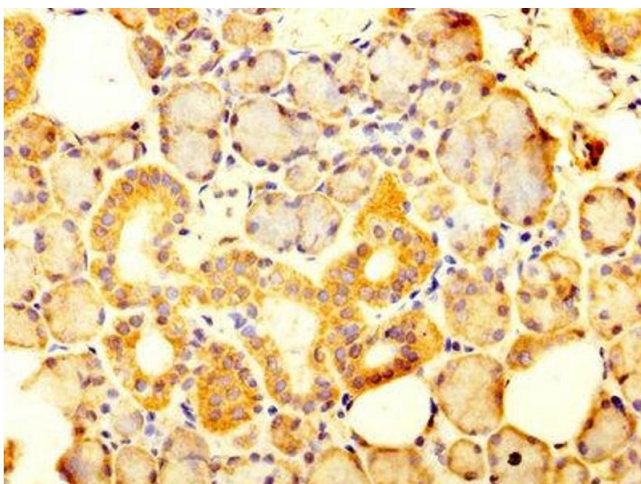
Immunohistochemistry

Image 1. IHC image of ABIN7170071 diluted at 1:300 and staining in paraffin-embedded human colon cancer performed on a Leica Bond™ system. After dewaxing and hydration, antigen retrieval was mediated by high pressure in a citrate buffer (pH 6.0). Section was blocked with 10% normal goat serum 30min at RT. Then primary antibody (1% BSA) was incubated at 4°C overnight. The primary is detected by a biotinylated secondary antibody and visualized using an HRP conjugated SP system.



Western Blotting

Image 2. Western Blot Positive WB detected in: HeLa whole cell lysate, U87 whole cell lysate, A549 whole cell lysate, HepG2 whole cell lysate, Mouse kidney tissue All lanes: SLC12A2 antibody at 6.8 µg/mL Secondary Goat polyclonal to rabbit IgG at 1/50000 dilution Predicted band size: 132, 130 kDa Observed band size: 132 kDa



Immunohistochemistry

Image 3. IHC image of ABIN7170071 diluted at 1:300 and staining in paraffin-embedded human salivary gland tissue performed on a Leica Bond™ system. After dewaxing and hydration, antigen retrieval was mediated by high pressure in a citrate buffer (pH 6.0). Section was blocked with 10% normal goat serum 30min at RT. Then primary antibody (1% BSA) was incubated at 4°C overnight. The primary is detected by a biotinylated secondary antibody and visualized using an HRP conjugated SP system.

Please check the [product details page](#) for more images. Overall 4 images are available for ABIN7170071.