



[Go to Product page](#)

Datasheet for ABIN7170079

## anti-SLC12A4 antibody (AA 601-900)

### 2 Images

#### Overview

Quantity:	100 µg
Target:	SLC12A4
Binding Specificity:	AA 601-900
Reactivity:	Human
Host:	Rabbit
Clonality:	Polyclonal
Conjugate:	This SLC12A4 antibody is un-conjugated
Application:	ELISA, Immunohistochemistry (IHC)

#### Product Details

Immunogen:	Recombinant Human Solute carrier family 12 member 4 protein (601-900AA)
Isotype:	IgG
Cross-Reactivity:	Human
Purification:	>95%, Protein G purified

#### Target Details

Target:	SLC12A4
Alternative Name:	SLC12A4 ( <a href="#">SLC12A4 Products</a> )
Background:	Background: Mediates electroneutral potassium-chloride cotransport when activated by cell swelling. May contribute to cell volume homeostasis in single cells. May be involved in the

## Target Details

---

regulation of basolateral Cl(-) exit in NaCl absorbing epithelia. Isoform 4 has no transport activity.

Aliases: Electroneutral potassium chloride cotransporter 1 antibody, Electroneutral potassium-chloride cotransporter 1 antibody, Erythroid K Cl cotransporter 1 antibody, Erythroid K-Cl cotransporter 1 antibody, FLJ40489 antibody, hKCC 1 antibody, hKCC1 antibody, KCC 1 antibody, KCC1 antibody, Potassium transport protein antibody, Potassium/chloride cotransporter 1 antibody, S12A4\_HUMAN antibody, Slc12a4 antibody, Solute carrier family 12 (potassium/chloride transporters) member 4 antibody, Solute carrier family 12 member 4 antibody

UniProt: [Q9UP95](#)

## Application Details

---

Application Notes: Recommended dilution: IHC:1:20-1:200,

Restrictions: For Research Use only

## Handling

---

Format: Liquid

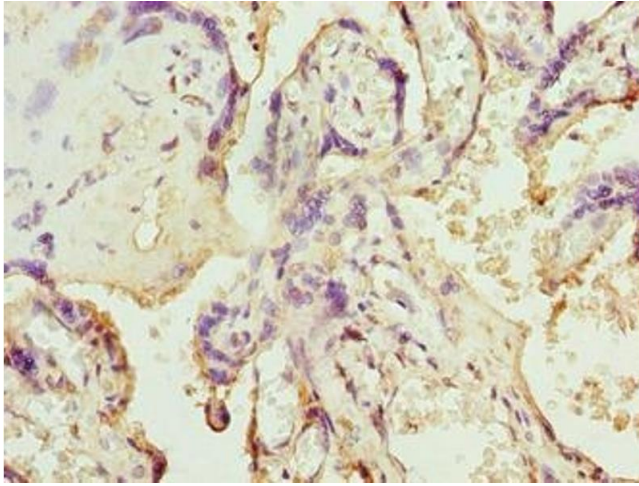
Buffer: Preservative: 0.03 % Proclin 300  
Constituents: 50 % Glycerol, 0.01M PBS, PH 7.4

Preservative: ProClin

Precaution of Use: This product contains ProClin: a POISONOUS AND HAZARDOUS SUBSTANCE which should be handled by trained staff only.

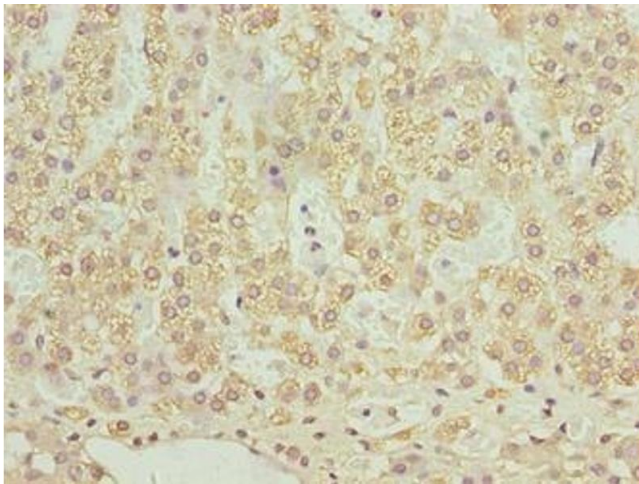
Storage: -20 °C,-80 °C

Storage Comment: Upon receipt, store at -20°C or -80°C. Avoid repeated freeze.



#### Immunohistochemistry

**Image 1.** Immunohistochemistry of paraffin-embedded human placenta tissue using ABIN7170079 at dilution of 1:100



#### Immunohistochemistry

**Image 2.** Immunohistochemistry of paraffin-embedded human adrenal gland tissue using ABIN7170079 at dilution of 1:100