

Datasheet for ABIN7170083
anti-KCC2 antibody (AA 944-1071)[Go to Product page](#)

2 Images

Overview

Quantity:	100 µg
Target:	KCC2 (SLC12A5)
Binding Specificity:	AA 944-1071
Reactivity:	Human
Host:	Rabbit
Clonality:	Polyclonal
Conjugate:	This KCC2 antibody is un-conjugated
Application:	Immunohistochemistry (IHC), ELISA, Immunofluorescence (IF)

Product Details

Immunogen:	Recombinant Human Solute carrier family 12 member 5 protein (944-1071AA)
Isotype:	IgG
Cross-Reactivity:	Human
Purification:	>95%, Protein G purified

Target Details

Target:	KCC2 (SLC12A5)
Alternative Name:	SLC12A5 (SLC12A5 Products)
Background:	Background: Mediates electroneutral potassium-chloride cotransport in mature neurons and is required for neuronal Cl ⁻ homeostasis. As major extruder of intracellular chloride, it

Target Details

establishes the low neuronal Cl(-) levels required for chloride influx after binding of GABA-A and glycine to their receptors, with subsequent hyperpolarization and neuronal inhibition (By similarity). Involved in the regulation of dendritic spine formation and maturation (PubMed:24668262).

Aliases: Electroneutral potassium chloride cotransporter 2 antibody, Electroneutral potassium-chloride cotransporter 2 antibody, Erythroid K Cl cotransporter 2 antibody, Furosemide sensitive K Cl cotransporter antibody, hKCC2 antibody, K-Cl cotransporter 2 antibody, KCC 2 antibody, KCC2 antibody, KIAA1176 antibody, Neuronal K Cl cotransporter antibody, Neuronal K-Cl cotransporter antibody, Potassium Chloride Cotransporter antibody, Potassium chloride transporter 5 antibody, rKCC2 antibody, S12A5 antibody, S12A5_HUMAN antibody, SLC12A5 antibody, Solute carrier family 12 (potassium chloride transporter) member 5 antibody, Solute carrier family 12 member 5 antibody

UniProt: [Q9H2X9](#)

Application Details

Application Notes: Recommended dilution: IHC:1:500-1:1000, IF:1:50-1:200,

Restrictions: For Research Use only

Handling

Format: Liquid

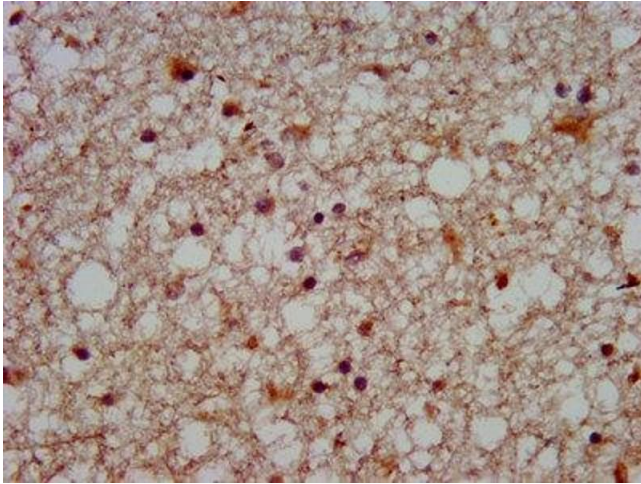
Buffer: Preservative: 0.03 % Proclin 300
Constituents: 50 % Glycerol, 0.01M PBS, pH 7.4

Preservative: ProClin

Precaution of Use: This product contains ProClin: a POISONOUS AND HAZARDOUS SUBSTANCE which should be handled by trained staff only.

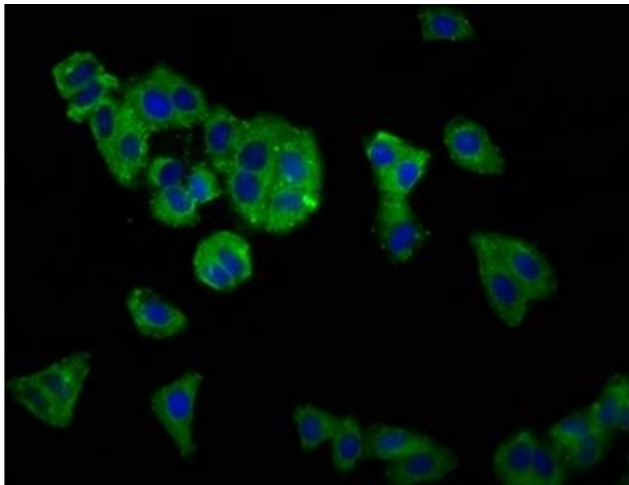
Storage: -20 °C,-80 °C

Storage Comment: Upon receipt, store at -20°C or -80°C. Avoid repeated freeze.



Immunohistochemistry

Image 1. IHC image of ABIN7170083 diluted at 1:500 and staining in paraffin-embedded human brain tissue performed on a Leica Bond™ system. After dewaxing and hydration, antigen retrieval was mediated by high pressure in a citrate buffer (pH 6.0). Section was blocked with 10% normal goat serum 30min at RT. Then primary antibody (1% BSA) was incubated at 4°C overnight. The primary is detected by a biotinylated secondary antibody and visualized using an HRP conjugated SP system.



Immunofluorescence

Image 2. Immunofluorescence staining of HepG2 cells with ABIN7170083 at 1:166, counter-stained with DAPI. The cells were fixed in 4% formaldehyde, permeabilized using 0.2% Triton X-100 and blocked in 10% normal Goat Serum. The cells were then incubated with the antibody overnight at 4°C. The secondary antibody was Alexa Fluor 488-conjugated AffiniPure Goat Anti-Rabbit IgG(H+L).