



Datasheet for ABIN7170088
anti-SLC12A7 antibody (AA 11-117)



[Go to Product page](#)

3 Images

Overview

Quantity:	100 µg
Target:	SLC12A7
Binding Specificity:	AA 11-117
Reactivity:	Human
Host:	Rabbit
Clonality:	Polyclonal
Conjugate:	This SLC12A7 antibody is un-conjugated
Application:	ELISA, Immunohistochemistry (IHC), Immunofluorescence (IF)

Product Details

Immunogen:	Recombinant Human Solute carrier family 12 member 7 protein (11-117AA)
Isotype:	IgG
Cross-Reactivity:	Human
Purification:	>95%, Protein G purified

Target Details

Target:	SLC12A7
Alternative Name:	SLC12A7 (SLC12A7 Products)
Background:	Background: Mediates electroneutral potassium-chloride cotransport when activated by cell swelling. May mediate K(+) uptake into Deiters' cells in the cochlea and contribute to K(+)

Target Details

recycling in the inner ear. Important for the survival of cochlear outer and inner hair cells and the maintenance of the organ of Corti. May be required for basolateral Cl(-) extrusion in the kidney and contribute to renal acidification (By similarity).

Aliases: D13ErtD261e antibody, Electroneutral potassium-chloride cotransporter 4 antibody, Furosemide sensitive KCl cotransporter 4 antibody, K Cl cotransporter KCC4 antibody, K-Cl cotransporter 4 antibody, Potassium/chloride transporter KCC4 antibody, S12A7_HUMAN antibody, SLC12A7 antibody, Solute carrier family 12 (potassium/chloride transporters), member 7 antibody, Solute carrier family 12 member 7 antibody, Solute carrier family 12, member 7 antibody

UniProt: [Q9Y666](#)

Application Details

Application Notes: Recommended dilution: IHC:1:20-1:200, IF:1:50-1:200,

Restrictions: For Research Use only

Handling

Format: Liquid

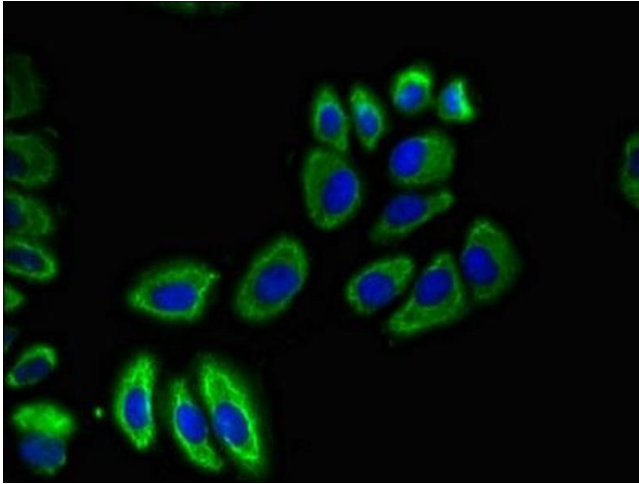
Buffer: Preservative: 0.03 % Proclin 300
Constituents: 50 % Glycerol, 0.01M PBS, pH 7.4

Preservative: ProClin

Precaution of Use: This product contains ProClin: a POISONOUS AND HAZARDOUS SUBSTANCE which should be handled by trained staff only.

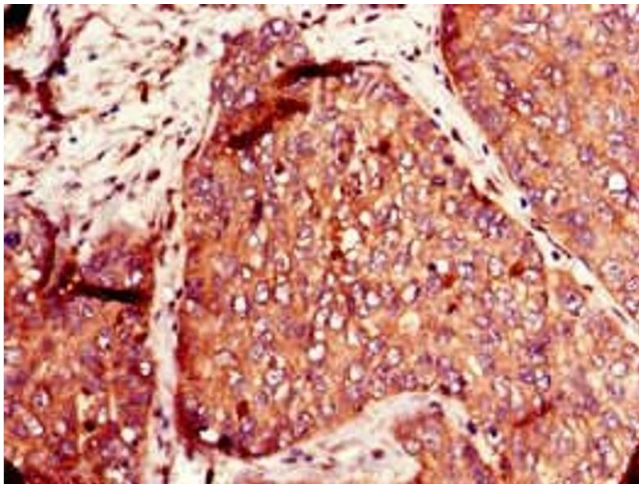
Storage: -20 °C,-80 °C

Storage Comment: Upon receipt, store at -20°C or -80°C. Avoid repeated freeze.



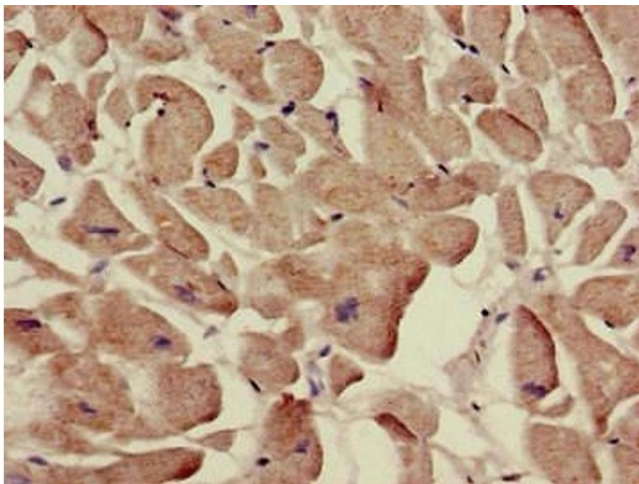
Immunofluorescence

Image 1. Immunofluorescent analysis of A549 cells using ABIN7170088 at dilution of 1:100 and Alexa Fluor 488-conjugated AffiniPure Goat Anti-Rabbit IgG(H+L)



Immunohistochemistry

Image 2. Immunohistochemistry of paraffin-embedded human ovarian cancer using ABIN7170088 at dilution of 1:100



Immunohistochemistry

Image 3. Immunohistochemistry of paraffin-embedded human heart tissue using ABIN7170088 at dilution of 1:100