



[Go to Product page](#)

Datasheet for ABIN7170096

## anti-SLC13A2 antibody (AA 345-455)

### 3 Images

#### Overview

Quantity:	100 µL
Target:	SLC13A2
Binding Specificity:	AA 345-455
Reactivity:	Human
Host:	Rabbit
Clonality:	Polyclonal
Conjugate:	This SLC13A2 antibody is un-conjugated
Application:	Western Blotting (WB), Immunohistochemistry (IHC), ELISA

#### Product Details

Immunogen:	Recombinant Human Solute carrier family 13 member 2 protein (345-455AA)
Isotype:	IgG
Cross-Reactivity:	Human
Purification:	Antigen Affinity Purified

#### Target Details

Target:	SLC13A2
Alternative Name:	SLC13A2 ( <a href="#">SLC13A2 Products</a> )
Background:	Background: Cotransport of sodium ions and dicarboxylates such as succinate and citrate. Aliases: SLC13A2 antibody, NADC1 antibody, SDCT1 antibody, Solute carrier family 13 member

## Target Details

2 antibody, Na(+)/dicarboxylate cotransporter 1 antibody, NaDC-1 antibody, Renal sodium/dicarboxylate cotransporter antibody

UniProt: [Q13183](#)

## Application Details

Application Notes: Recommended dilution: WB:1:1000-1:5000, IHC:1:20-1:200,

Restrictions: For Research Use only

## Handling

Format: Liquid

Buffer: PBS with 0.02 % sodium azide, 50 % glycerol, pH 7.3.

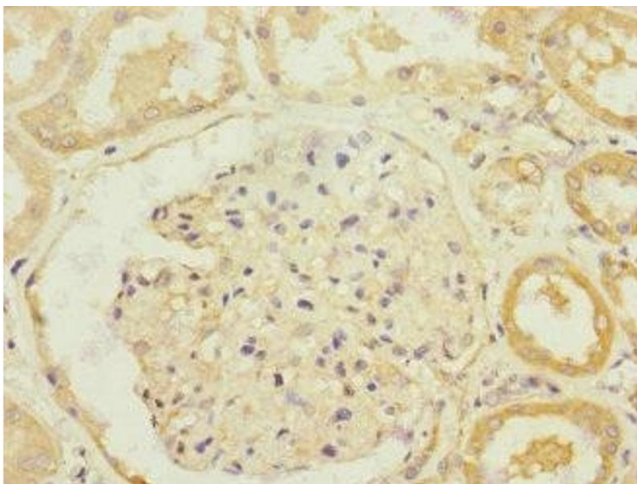
Preservative: Sodium azide

Precaution of Use: This product contains Sodium azide: a POISONOUS AND HAZARDOUS SUBSTANCE which should be handled by trained staff only.

Storage: -20 °C,-80 °C

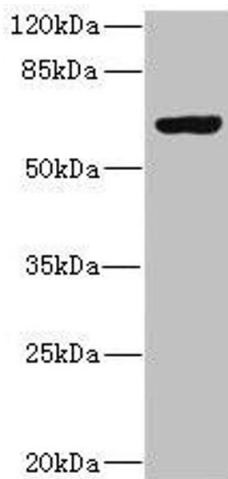
Storage Comment: Upon receipt, store at -20°C or -80°C. Avoid repeated freeze.

## Images



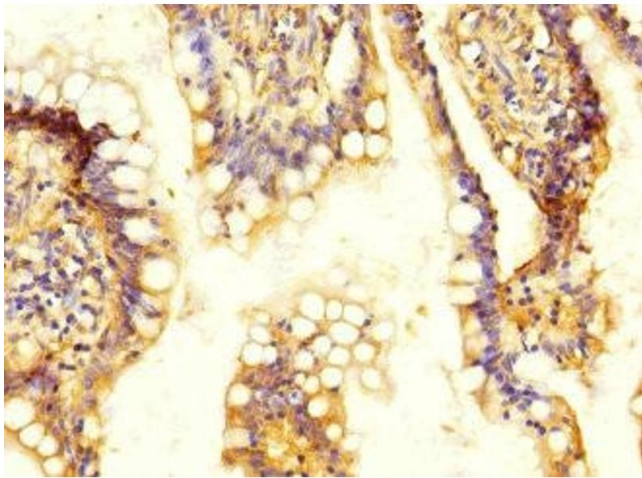
### Immunohistochemistry

**Image 1.** Immunohistochemistry of paraffin-embedded human kidney tissue using ABIN7170096 at dilution of 1:100



### Western Blotting

**Image 2.** Western blot All lanes: SLC13A2 antibody at 1.29  $\mu$ g/mL + 293T whole cell lysate Secondary Goat polyclonal to rabbit IgG at 1/10000 dilution Predicted band size: 65, 70 kDa Observed band size: 65 kDa



### Immunohistochemistry

**Image 3.** Immunohistochemistry of paraffin-embedded human colon cancer using ABIN7170096 at dilution of 1:100