

Datasheet for ABIN7170102
anti-SLC13A5 antibody (AA 156-204)[Go to Product page](#)

3 Images

Overview

Quantity:	100 µg
Target:	SLC13A5
Binding Specificity:	AA 156-204
Reactivity:	Human
Host:	Rabbit
Clonality:	Polyclonal
Conjugate:	This SLC13A5 antibody is un-conjugated
Application:	ELISA, Western Blotting (WB), Immunohistochemistry (IHC), Immunofluorescence (IF)

Product Details

Immunogen:	Recombinant Human Solute carrier family 13 member 5 protein (156-204AA)
Isotype:	IgG
Cross-Reactivity:	Human, Mouse, Rat
Purification:	>95%, Protein G purified

Target Details

Target:	SLC13A5
Alternative Name:	SLC13A5 (SLC13A5 Products)
Background:	Background: High-affinity sodium/citrate cotransporter that mediates citrate entry into cells. The transport process is electrogenic, it is the trivalent form of citrate rather than the divalent

Target Details

form that is recognized as a substrate. May facilitate the utilization of circulating citrate for the generation of metabolic energy and for the synthesis of fatty acids and cholesterol.

Aliases: Na(+)/citrate cotransporter antibody, NaC2/NaCT antibody, NaCT antibody, Novel solute carrier family 13 (sodium dependent dicarboxylate transporter) (Slc13a2 or 3) member antibody, S13A5_HUMAN antibody, Slc13a5 antibody, Sodium coupled citrate transporter antibody, Sodium-coupled citrate transporter antibody, Sodium-dependent citrate transporter antibody, Solute carrier family 13 (sodium dependent citrate transporter), member 5 antibody, Solute carrier family 13 member 5 antibody

UniProt: [Q86YT5](#)

Pathways: [Dicarboxylic Acid Transport](#)

Application Details

Application Notes: Recommended dilution: WB:1:500-1:5000, IHC:1:20-1:200, IF:1:50-1:200,

Restrictions: For Research Use only

Handling

Format: Liquid

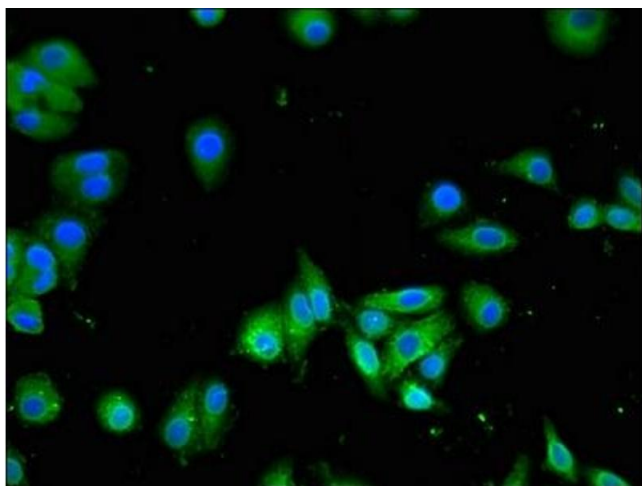
Buffer: Preservative: 0.03 % Proclin 300
Constituents: 50 % Glycerol, 0.01M PBS, pH 7.4

Preservative: ProClin

Precaution of Use: This product contains ProClin: a POISONOUS AND HAZARDOUS SUBSTANCE which should be handled by trained staff only.

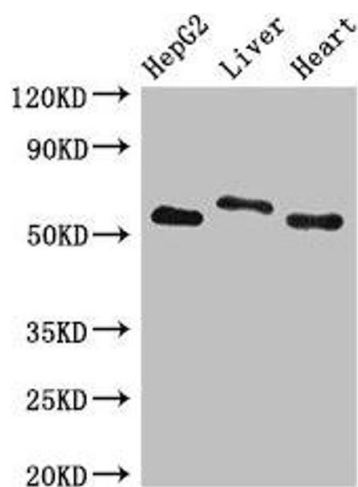
Storage: -20 °C, -80 °C

Storage Comment: Upon receipt, store at -20°C or -80°C. Avoid repeated freeze.



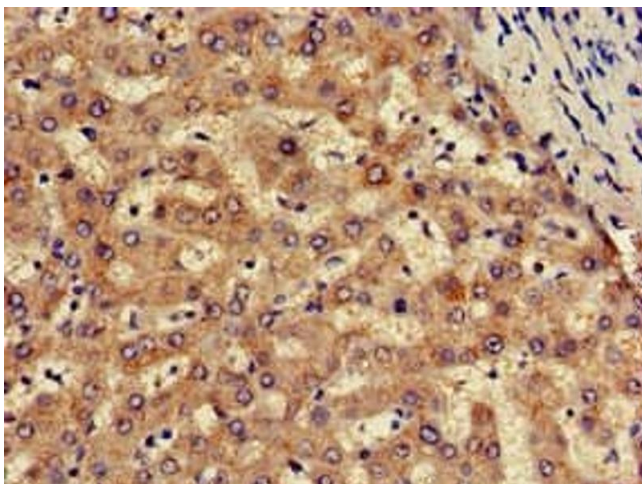
Immunofluorescence

Image 1. Immunofluorescent analysis of HepG2 cells using ABIN7170102 at dilution of 1:100 and Alexa Fluor 488-conjugated AffiniPure Goat Anti-Rabbit IgG(H+L)



Western Blotting

Image 2. Western Blot Positive WB detected in: HepG2 whole cell lysate, Rat liver tissue, Mouse heart tissue All lanes: SLC13A5 antibody at 2.7 µg/mL Secondary Goat polyclonal to rabbit IgG at 1/50000 dilution Predicted band size: 64, 59, 62 kDa Observed band size: 64, 59 kDa



Immunohistochemistry

Image 3. Immunohistochemistry of paraffin-embedded human liver tissue using ABIN7170102 at dilution of 1:100