

Datasheet for ABIN7170114
anti-GLUT1 antibody (AA 210-310)

3 Images

[Go to Product page](#)

Overview

Quantity:	100 µL
Target:	GLUT1 (SLC2A1)
Binding Specificity:	AA 210-310
Reactivity:	Human
Host:	Rabbit
Clonality:	Polyclonal
Conjugate:	This GLUT1 antibody is un-conjugated
Application:	Western Blotting (WB), Immunohistochemistry (IHC), ELISA

Product Details

Immunogen:	Recombinant Human Solute carrier family 2, facilitated glucose transporter member 1 protein (210-310AA)
Isotype:	IgG
Cross-Reactivity:	Human, Mouse
Purification:	Antigen Affinity Purified

Target Details

Target:	GLUT1 (SLC2A1)
Alternative Name:	SLC2A1 (SLC2A1 Products)
Background:	Background: Facilitative glucose transporter. This isoform may be responsible for constitutive

Target Details

or basal glucose uptake. Has a very broad substrate specificity, can transport a wide range of aldoses including both pentoses and hexoses.

Aliases: Choreoathetosis/spasticity episodic (paroxysmal choreoathetosis/spasticity) antibody, CSE antibody, DYT17 antibody, DYT18 antibody, DYT9 antibody, EIG12 antibody, erythrocyte/brain antibody, Erythrocyte/hepatoma glucose transporter antibody, facilitated glucose transporter member 1 antibody, Glucose transporter 1 antibody, Glucose transporter type 1 antibody, Glucose transporter type 1, erythrocyte/brain antibody, GLUT antibody, GLUT-1 antibody, GLUT1 antibody, GLUT1DS antibody, GLUTB antibody, GT1 antibody, GTG1 antibody, Gtg3 antibody, GTR1_HUMAN antibody, HepG2 glucose transporter antibody, HTLVR antibody, Human T cell leukemia virus (I and II) receptor antibody, MGC141895 antibody, MGC141896 antibody, PED antibody, RATGTG1 antibody, Receptor for HTLV 1 and HTLV 2 antibody, SLC2A1 antibody, Solute carrier family 2 (facilitated glucose transporter), member 1 antibody, Solute carrier family 2 antibody, Solute carrier family 2, facilitated glucose transporter member 1 antibody

UniProt: [P11166](#)

Pathways: [Sensory Perception of Sound](#), [Dicarboxylic Acid Transport](#), [Warburg Effect](#)

Application Details

Application Notes: Recommended dilution: WB:1:500-1:5000, IHC:1:20-1:200,

Restrictions: For Research Use only

Handling

Format: Liquid

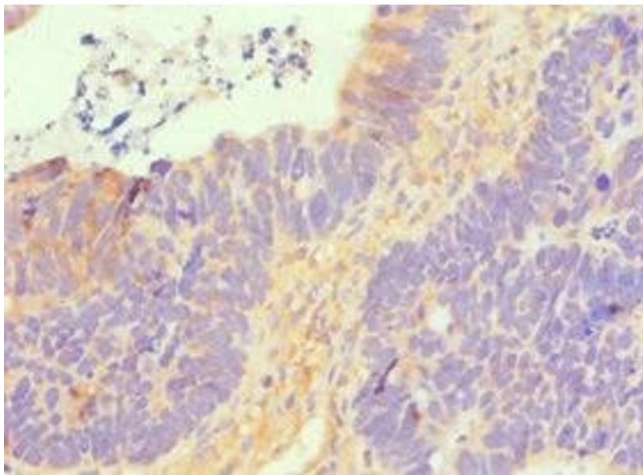
Buffer: PBS with 0.02 % sodium azide, 50 % glycerol, pH 7.3.

Preservative: Sodium azide

Precaution of Use: This product contains Sodium azide: a POISONOUS AND HAZARDOUS SUBSTANCE which should be handled by trained staff only.

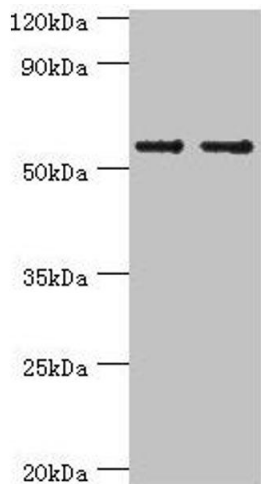
Storage: -20 °C,-80 °C

Storage Comment: Upon receipt, store at -20°C or -80°C. Avoid repeated freeze.



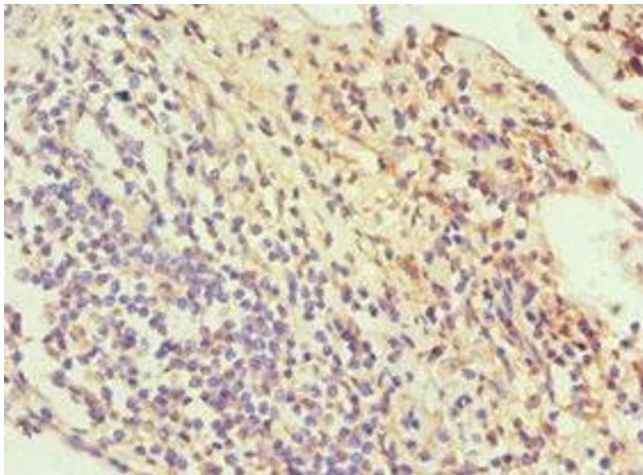
Immunohistochemistry

Image 1. Immunohistochemistry of paraffin-embedded human ovarian cancer using ABIN7170114 at dilution of 1:100



Western Blotting

Image 2. Western blot All lanes: SLC2A1 antibody at 6 μ g/mL Lane 1: NIH/3T3 whole cell lysate Lane 2: Hela whole cell lysate Secondary Goat polyclonal to rabbit IgG at 1/10000 dilution Predicted band size: 54 kDa Observed band size: 54 kDa



Immunohistochemistry

Image 3. Immunohistochemistry of paraffin-embedded human cervical cancer using ABIN7170114 at dilution of 1:100