

Datasheet for ABIN7170115
anti-SLC2A2 antibody (AA 67-174)



[Go to Product page](#)

1 Image

Overview

Quantity:	100 µg
Target:	SLC2A2
Binding Specificity:	AA 67-174
Reactivity:	Human
Host:	Rabbit
Clonality:	Polyclonal
Conjugate:	This SLC2A2 antibody is un-conjugated
Application:	ELISA, Immunofluorescence (IF)

Product Details

Immunogen:	Recombinant Human Solute carrier family 2, facilitated glucose transporter member 2 protein (67-174AA)
Isotype:	IgG
Cross-Reactivity:	Human
Purification:	>95%, Protein G purified

Target Details

Target:	SLC2A2
Alternative Name:	SLC2A2 (SLC2A2 Products)
Background:	Background: Facilitative glucose transporter. This isoform likely mediates the bidirectional

Target Details

transfer of glucose across the plasma membrane of hepatocytes and is responsible for uptake of glucose by the beta cells, may comprise part of the glucose-sensing mechanism of the beta cell. May also participate with the Na(+)/glucose cotransporter in the transcellular transport of glucose in the small intestine and kidney.

Aliases: liver antibody, Glucose Transporter 2 antibody, Glucose Transporter GLUT2 antibody, Glucose transporter type 2 antibody, Glucose transporter type 2 liver antibody, Glucose transporter, liver/islet antibody, GLUT-2 antibody, GLUT2 antibody, GTR2_HUMAN antibody, GTT2 antibody, SLC2A2 antibody, Solute carrier family 2 (facilitated glucose transporter) member 2 antibody, Solute carrier family 2 facilitated glucose transporter member 2 antibody, Solute carrier family 2, facilitated glucose transporter member 2 antibody

UniProt: [P11168](#)

Pathways: [Warburg Effect](#)

Application Details

Application Notes: Recommended dilution: IF:1:50-1:200,

Restrictions: For Research Use only

Handling

Format: Liquid

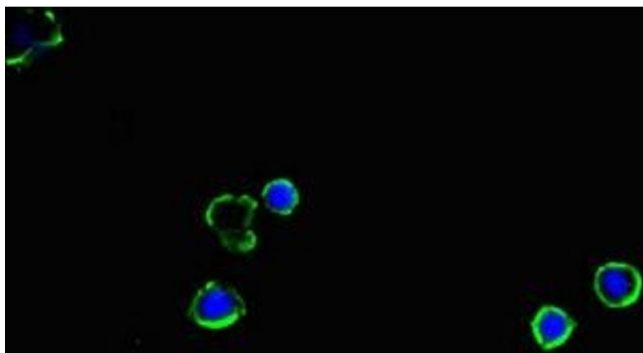
Buffer: Preservative: 0.03 % Proclin 300
Constituents: 50 % Glycerol, 0.01M PBS, PH 7.4

Preservative: ProClin

Precaution of Use: This product contains ProClin: a POISONOUS AND HAZARDOUS SUBSTANCE which should be handled by trained staff only.

Storage: -20 °C,-80 °C

Storage Comment: Upon receipt, store at -20°C or -80°C. Avoid repeated freeze.



Immunofluorescence

Image 1. Immunofluorescent analysis of MCF-7 cells using ABIN7170115 at dilution of 1:100 and Alexa Fluor 488-conjugated AffiniPure Goat Anti-Rabbit IgG(H+L)