



[Go to Product page](#)

Datasheet for ABIN7170119
anti-SLC2A3 antibody (AA 205-269)

2 Images

Overview

Quantity:	100 µg
Target:	SLC2A3
Binding Specificity:	AA 205-269
Reactivity:	Human
Host:	Rabbit
Clonality:	Polyclonal
Conjugate:	This SLC2A3 antibody is un-conjugated
Application:	ELISA, Immunohistochemistry (IHC), Immunofluorescence (IF)

Product Details

Immunogen:	Recombinant Human Solute carrier family 2, facilitated glucose transporter member 3 protein (205-269AA)
Isotype:	IgG
Cross-Reactivity:	Human
Purification:	>95%, Protein G purified

Target Details

Target:	SLC2A3
Alternative Name:	SLC2A3 (SLC2A3 Products)
Background:	Background: Facilitative glucose transporter that can also mediate the uptake of various other

Target Details

monosaccharides across the cell membrane (PubMed:9477959, PubMed:26176916). Mediates the uptake of glucose, 2-deoxyglucose, galactose, mannose, xylose and fucose, and probably also dehydroascorbate (PubMed:9477959, PubMed:26176916). Does not mediate fructose transport (PubMed:9477959, PubMed:26176916).

Aliases: brain antibody, FLJ90380 antibody, Glucose transporter type 3 antibody, Glucose transporter type 3 brain antibody, GLUT 3 antibody, GLUT-3 antibody, GLUT3 antibody, GTR3_HUMAN antibody, Slc2a3 antibody, Solute Carrier Family 2 (Facilitated Glucose Transporter) Member 3 antibody, Solute carrier family 2, facilitated glucose transporter member 3 antibody

UniProt: [P11169](#)

Pathways: [Warburg Effect](#)

Application Details

Application Notes: Recommended dilution: IHC:1:20-1:200, IF:1:50-1:200,

Restrictions: For Research Use only

Handling

Format: Liquid

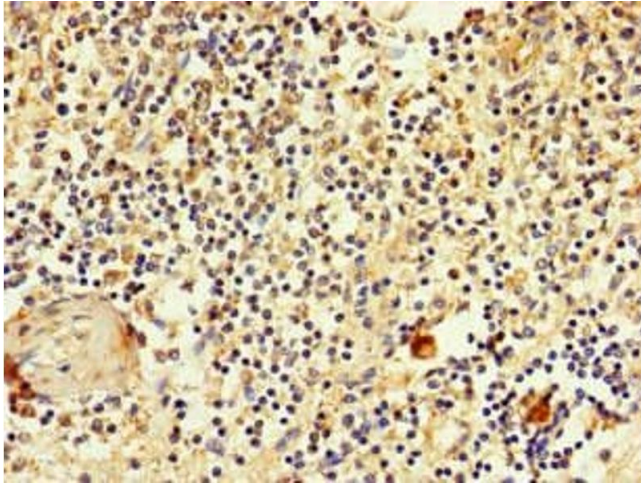
Buffer: Preservative: 0.03 % Proclin 300
Constituents: 50 % Glycerol, 0.01M PBS, PH 7.4

Preservative: ProClin

Precaution of Use: This product contains ProClin: a POISONOUS AND HAZARDOUS SUBSTANCE which should be handled by trained staff only.

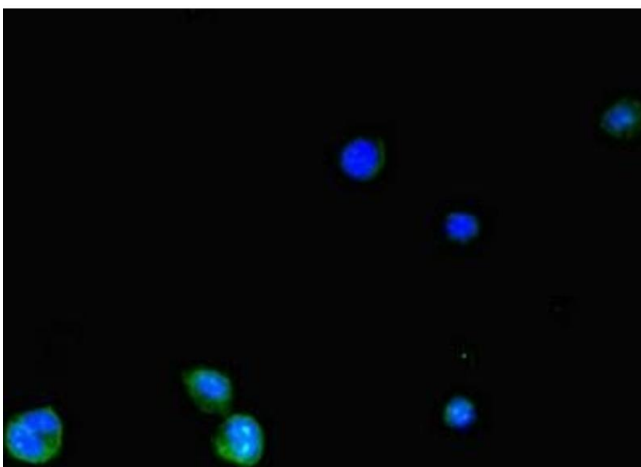
Storage: -20 °C,-80 °C

Storage Comment: Upon receipt, store at -20°C or -80°C. Avoid repeated freeze.



Immunohistochemistry

Image 1. Immunohistochemistry of paraffin-embedded human spleen tissue using ABIN7170119 at dilution of 1:100



Immunofluorescence

Image 2. Immunofluorescent analysis of HepG2 cells using ABIN7170119 at dilution of 1:100 and Alexa Fluor 488-conjugated AffiniPure Goat Anti-Rabbit IgG(H+L)