

Datasheet for ABIN7170127  
**anti-SLC2A9 antibody (AA 473-511)**

## 3 Images

[Go to Product page](#)

## Overview

Quantity:	100 µg
Target:	SLC2A9
Binding Specificity:	AA 473-511
Reactivity:	Human
Host:	Rabbit
Clonality:	Polyclonal
Conjugate:	This SLC2A9 antibody is un-conjugated
Application:	Western Blotting (WB), ELISA, Immunohistochemistry (IHC)

## Product Details

Immunogen:	Recombinant Human Solute carrier family 2, facilitated glucose transporter member 9 protein (473-511AA)
Isotype:	IgG
Cross-Reactivity:	Human, Mouse
Purification:	>95%, Protein G purified

## Target Details

Target:	SLC2A9
Alternative Name:	SLC2A9 ( <a href="#">SLC2A9 Products</a> )
Background:	Background: Transport urate and fructose. May have a role in the urate reabsorption by

## Target Details

proximal tubules. Also transports glucose at low rate.

Aliases: glucose transporter 9 antibody, Glucose transporter like protein 9 antibody, Glucose transporter type 9 antibody, GLUT 9 antibody, GLUT-9 antibody, GLUT9 antibody, GLUTX antibody, GTR9\_HUMAN antibody, Human glucose transporter like protein 9 antibody, SLC2A9 antibody, Solute carrier family 2 (facilitated glucose transporter) member 9 antibody, Solute carrier family 2 facilitated glucose transporter member 9 antibody, Solute carrier family 2 member 9 antibody, Solute carrier family 2 member 9 protein antibody, Solute carrier family 2, facilitated glucose transporter member 9 antibody, UAQTL2 antibody, Urate voltage driven efflux transporter 1 antibody, URATv1 antibody

UniProt: [Q9NRM0](#)

## Application Details

Application Notes: Recommended dilution: WB:1:500-1:5000, IHC:1:20-1:200,

Restrictions: For Research Use only

## Handling

Format: Liquid

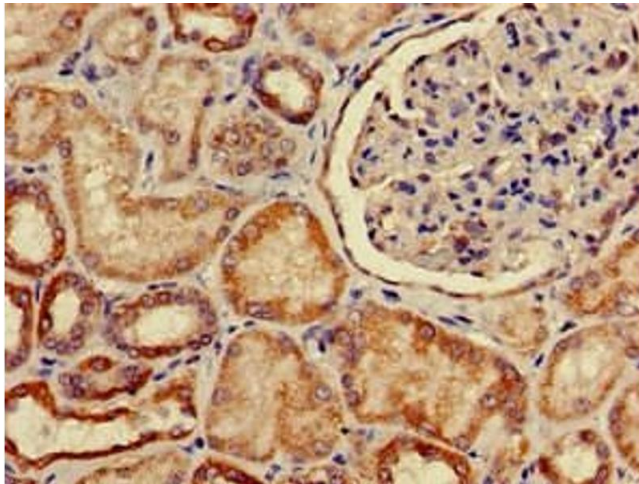
Buffer: Preservative: 0.03 % Proclin 300  
Constituents: 50 % Glycerol, 0.01M PBS, pH 7.4

Preservative: ProClin

Precaution of Use: This product contains ProClin: a POISONOUS AND HAZARDOUS SUBSTANCE which should be handled by trained staff only.

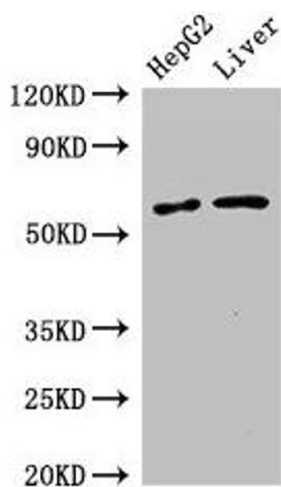
Storage: -20 °C, -80 °C

Storage Comment: Upon receipt, store at -20°C or -80°C. Avoid repeated freeze.



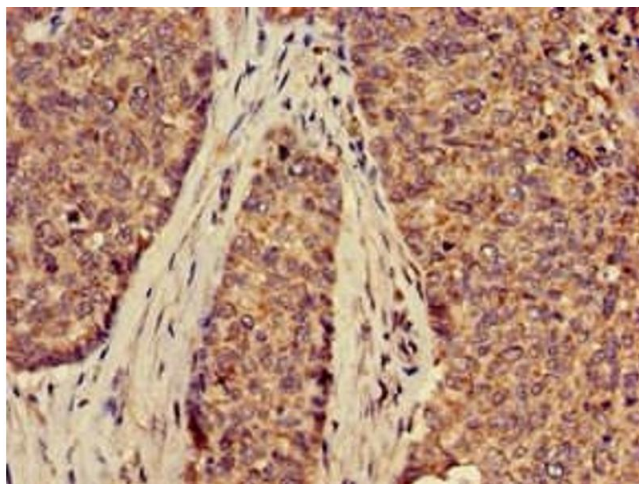
### Immunohistochemistry

**Image 1.** Immunohistochemistry of paraffin-embedded human kidney tissue using ABIN7170127 at dilution of 1:100



### Western Blotting

**Image 2.** Western Blot Positive WB detected in: HepG2 whole cell lysate, Mouse liver tissue All lanes: SLC2A9 antibody at 2.7 µg/mL Secondary Goat polyclonal to rabbit IgG at 1/50000 dilution Predicted band size: 59, 56 kDa Observed band size: 59 kDa



### Immunohistochemistry

**Image 3.** Immunohistochemistry of paraffin-embedded human ovarian cancer using ABIN7170127 at dilution of 1:100