



[Go to Product page](#)

Datasheet for ABIN7170135
anti-SLC22A10 antibody (AA 37-145)

1 Image

Overview

Quantity:	100 µL
Target:	SLC22A10
Binding Specificity:	AA 37-145
Reactivity:	Human
Host:	Rabbit
Clonality:	Polyclonal
Conjugate:	This SLC22A10 antibody is un-conjugated
Application:	Immunofluorescence (IF), ELISA

Product Details

Immunogen:	Recombinant Human Solute carrier family 22 member 10 protein (37-145AA)
Isotype:	IgG
Cross-Reactivity:	Human
Purification:	Antigen Affinity Purified

Target Details

Target:	SLC22A10
Alternative Name:	SLC22A10 (SLC22A10 Products)
Background:	Background: integral component of plasma membrane, inorganic anion exchanger activity, sodium-independent organic anion transmembrane transporter activity, urate transmembrane

Target Details

transporter activity, sodium-independent organic anion transport, urate transport

Aliases: SLC22A10 antibody, OAT5 antibody, Solute carrier family 22 member 10 antibody, Organic anion transporter 5 antibody

UniProt: [Q63ZE4](#)

Application Details

Application Notes: Recommended dilution: IF:1:100-1:500,

Restrictions: For Research Use only

Handling

Format: Liquid

Buffer: Preservative: 0.03 % Proclin 300
Constituents: 50 % Glycerol, 0.01M PBS, PH 7.4

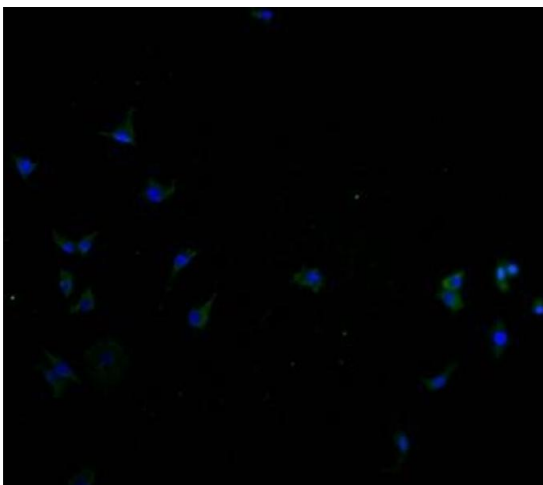
Preservative: ProClin

Precaution of Use: This product contains ProClin: a POISONOUS AND HAZARDOUS SUBSTANCE which should be handled by trained staff only.

Storage: -20 °C,-80 °C

Storage Comment: Upon receipt, store at -20°C or -80°C. Avoid repeated freeze.

Images



Immunofluorescence

Image 1. Immunofluorescence staining of SH-SY5Y cells with ABIN7170135 at 1:100, counter-stained with DAPI. The cells were fixed in 4 % formaldehyde and blocked in 10 % normal Goat Serum. The cells were then incubated with the antibody overnight at 4 °C. The secondary antibody was Alexa Fluor 488-conjugated AffiniPure Goat Anti-Rabbit IgG(H+L).