



[Go to Product page](#)

Datasheet for ABIN7170139  
**anti-SLC22A11 antibody (AA 40-150)**

2 Images

### Overview

Quantity:	100 µL
Target:	SLC22A11
Binding Specificity:	AA 40-150
Reactivity:	Human
Host:	Rabbit
Clonality:	Polyclonal
Conjugate:	This SLC22A11 antibody is un-conjugated
Application:	ELISA, Immunohistochemistry (IHC)

### Product Details

Immunogen:	Recombinant Human Solute carrier family 22 member 11 protein (40-150AA)
Isotype:	IgG
Cross-Reactivity:	Human
Purification:	Antigen Affinity Purified

### Target Details

Target:	SLC22A11
Alternative Name:	SLC22A11 ( <a href="#">SLC22A11 Products</a> )
Background:	Background: Mediates saturable uptake of estrone sulfate, dehydroepiandrosterone sulfate and related compounds.

## Target Details

Aliases: hOAT4 antibody, MGC34282 antibody, OAT4 antibody, Organic anion transporter 4 antibody, S22AB\_HUMAN antibody, SLC22A11 antibody, Solute carrier family 22 (organic anion/urate transporter) member 11 antibody, Solute carrier family 22 member 11 antibody

UniProt: [Q9NSA0](#)

## Application Details

Application Notes: Recommended dilution: IHC:1:20-1:200,

Restrictions: For Research Use only

## Handling

Format: Liquid

Buffer: PBS with 0.02 % sodium azide, 50 % glycerol, pH 7.3.

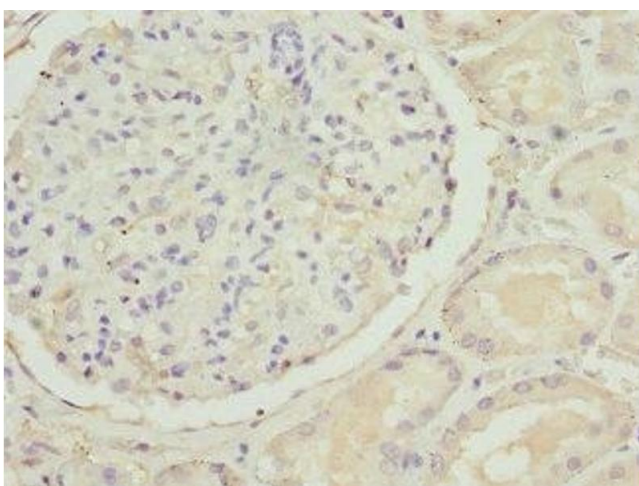
Preservative: Sodium azide

Precaution of Use: This product contains Sodium azide: a POISONOUS AND HAZARDOUS SUBSTANCE which should be handled by trained staff only.

Storage: -20 °C,-80 °C

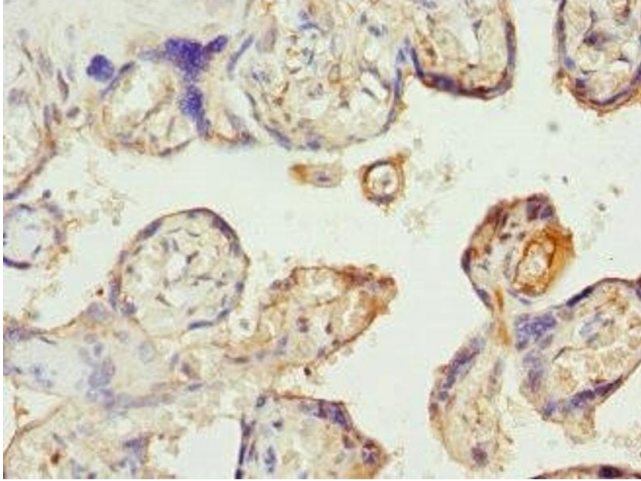
Storage Comment: Upon receipt, store at -20°C or -80°C. Avoid repeated freeze.

## Images



### Immunohistochemistry

**Image 1.** Immunohistochemistry of paraffin-embedded human kidney tissue using ABIN7170139 at dilution of 1:100



### Immunohistochemistry

**Image 2.** Immunohistochemistry of paraffin-embedded human placenta tissue using ABIN7170139 at dilution of 1:100