

Datasheet for ABIN7170144  
**anti-SLC22A2 antibody (AA 48-135)**[Go to Product page](#)

## 4 Images

## Overview

Quantity:	100 µg
Target:	SLC22A2
Binding Specificity:	AA 48-135
Reactivity:	Human
Host:	Rabbit
Clonality:	Polyclonal
Conjugate:	This SLC22A2 antibody is un-conjugated
Application:	Western Blotting (WB), ELISA, Immunohistochemistry (IHC), Immunofluorescence (IF)

## Product Details

Immunogen:	Recombinant Human Solute carrier family 22 member 2 protein (48-135AA)
Isotype:	IgG
Cross-Reactivity:	Human, Mouse, Rat
Purification:	>95%, Protein G purified

## Target Details

Target:	SLC22A2
Alternative Name:	SLC22A2 ( <a href="#">SLC22A2 Products</a> )
Background:	Background: Mediates tubular uptake of organic compounds from circulation. Mediates the influx of agmatine, dopamine, noradrenaline (norepinephrine), serotonin, choline, famotidine,

## Target Details

ranitidine, histamin, creatinine, amantadine, memantine, acriflavine, 4-[4-(dimethylamino)-styryl]-N-methylpyridinium ASP, amiloride, metformin, N-1-methylnicotinamide (NMN), tetraethylammonium (TEA), 1-methyl-4-phenylpyridinium (MPP), cimetidine, cisplatin and oxaliplatin. Cisplatin may develop a nephrotoxic action. Transport of creatinine is inhibited by fluoroquinolones such as DX-619 and LVFX. This transporter is a major determinant of the anticancer activity of oxaliplatin and may contribute to antitumor specificity.

Aliases: SLC22A2 antibody, OCT2Solute carrier family 22 member 2 antibody, Organic cation transporter 2 antibody, hOCT2 antibody

UniProt: [O15244](#)

## Application Details

Application Notes: Recommended dilution: WB:1:500-1:5000, IHC:1:20-1:200, IF:1:50-1:200,

Restrictions: For Research Use only

## Handling

Format: Liquid

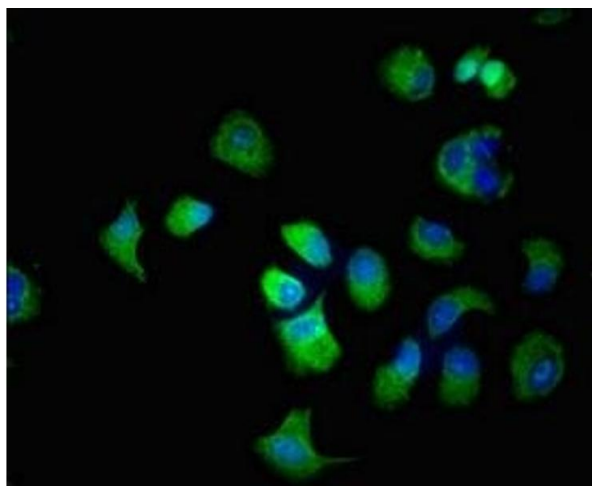
Buffer: Preservative: 0.03 % Proclin 300  
Constituents: 50 % Glycerol, 0.01M PBS, pH 7.4

Preservative: ProClin

Precaution of Use: This product contains ProClin: a POISONOUS AND HAZARDOUS SUBSTANCE which should be handled by trained staff only.

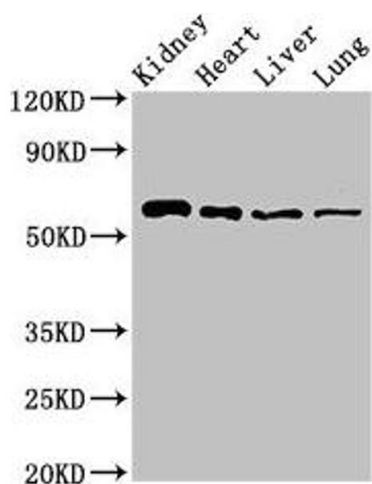
Storage: -20 °C,-80 °C

Storage Comment: Upon receipt, store at -20°C or -80°C. Avoid repeated freeze.



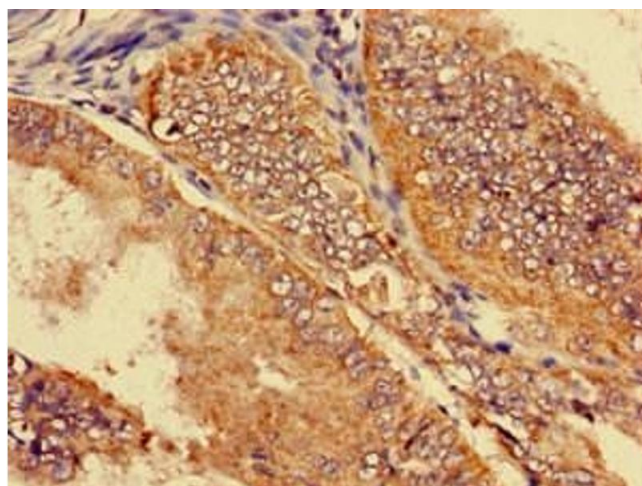
#### Immunofluorescence

**Image 1.** Immunofluorescent analysis of MCF-7 cells using ABIN7170144 at dilution of 1:100 and Alexa Fluor 488-conjugated AffiniPure Goat Anti-Rabbit IgG(H+L)



#### Western Blotting

**Image 2.** Western Blot Positive WB detected in: Mouse kidney tissue, Rat heart tissue, Rat liver tissue, Rat lung tissue All lanes: SLC22A2 antibody at 2.7 µg/mL Secondary Goat polyclonal to rabbit IgG at 1/50000 dilution Predicted band size: 63, 55, 27 kDa Observed band size: 63 kDa



#### Immunohistochemistry

**Image 3.** Immunohistochemistry of paraffin-embedded human endometrial cancer using ABIN7170144 at dilution of 1:100

Please check the [product details page](#) for more images. Overall 4 images are available for ABIN7170144.