



[Go to Product page](#)

Datasheet for ABIN7170148
anti-SLC22A23 antibody (AA 3-206)

2 Images

Overview

Quantity:	100 µg
Target:	SLC22A23
Binding Specificity:	AA 3-206
Reactivity:	Human
Host:	Rabbit
Clonality:	Polyclonal
Conjugate:	This SLC22A23 antibody is un-conjugated
Application:	ELISA, Western Blotting (WB), Immunohistochemistry (IHC)

Product Details

Immunogen:	Recombinant Human Solute carrier family 22 member 23 protein (3-206AA)
Isotype:	IgG
Cross-Reactivity:	Human, Mouse
Purification:	>95%, Protein G purified

Target Details

Target:	SLC22A23
Alternative Name:	SLC22A23 (SLC22A23 Products)
Background:	Background: integral component of membrane, organic anion transmembrane transporter activity

Target Details

Aliases: SLC22A23 antibody, C6orf85 antibody, Solute carrier family 22 member 23 antibody

UniProt: [A1A5C7](#)

Application Details

Application Notes: Recommended dilution: WB:1:500-1:5000, IHC:1:20-1:200,

Restrictions: For Research Use only

Handling

Format: Liquid

Buffer: Preservative: 0.03 % Proclin 300
Constituents: 50 % Glycerol, 0.01M PBS, pH 7.4

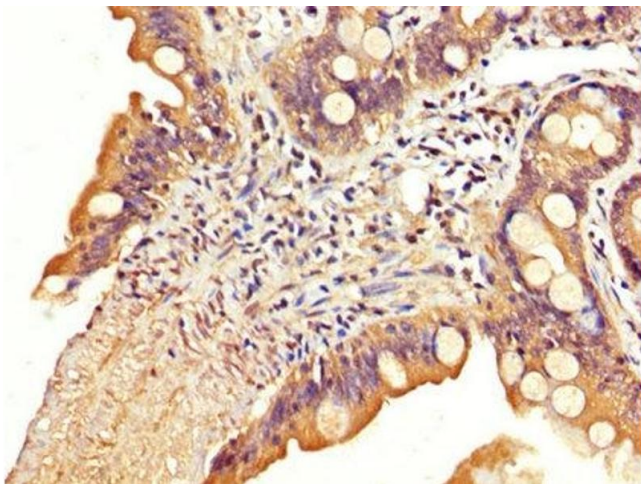
Preservative: ProClin

Precaution of Use: This product contains ProClin: a POISONOUS AND HAZARDOUS SUBSTANCE which should be handled by trained staff only.

Storage: -20 °C,-80 °C

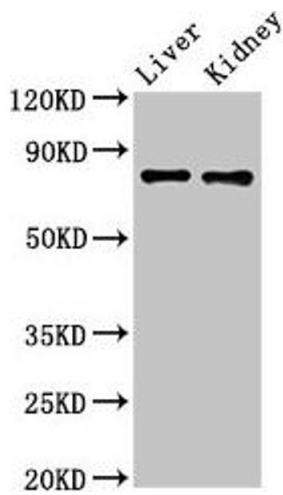
Storage Comment: Upon receipt, store at -20°C or -80°C. Avoid repeated freeze.

Images



Immunohistochemistry

Image 1. IHC image of ABIN7170148 diluted at 1:200 and staining in paraffin-embedded human small intestine tissue performed on a Leica Bond™ system. After dewaxing and hydration, antigen retrieval was mediated by high pressure in a citrate buffer (pH 6.0). Section was blocked with 10 % normal goat serum 30 min at RT. Then primary antibody (1 % BSA) was incubated at 4 °C overnight. The primary is detected by a biotinylated secondary antibody and visualized using an HRP conjugated SP system.



Western Blotting

Image 2. Western Blot Positive WB detected in: Mouse liver tissue, Mouse kidney tissue All lanes: SLC22A23 antibody at 5.2 µg/mL Secondary Goat polyclonal to rabbit IgG at 1/50000 dilution Predicted band size: 74, 45, 35, 39 kDa Observed band size: 74 kDa