

Datasheet for ABIN7170156
anti-SLC22A25 antibody (AA 31-145)[Go to Product page](#)

3 Images

Overview

Quantity:	100 µg
Target:	SLC22A25
Binding Specificity:	AA 31-145
Reactivity:	Human
Host:	Rabbit
Clonality:	Polyclonal
Conjugate:	This SLC22A25 antibody is un-conjugated
Application:	ELISA, Western Blotting (WB), Immunohistochemistry (IHC), Immunofluorescence (IF)

Product Details

Immunogen:	Recombinant Human Solute carrier family 22 member 25 protein (31-145AA)
Isotype:	IgG
Cross-Reactivity:	Human
Purification:	>95%, Protein G purified

Target Details

Target:	SLC22A25
Alternative Name:	SLC22A25 (SLC22A25 Products)
Background:	Background: integral component of plasma membrane, inorganic anion exchanger activity, sodium-independent organic anion transmembrane transporter activity, urate transmembrane

Target Details

transporter activity, sodium-independent organic anion transport, urate transport
Aliases: HIMTP antibody, MGC120420 antibody, Organic anion transporter UST6 antibody, S22AP_HUMAN antibody, SLC22A25 antibody, Solute carrier family 22 member 25 antibody, UST6 antibody

UniProt: [Q6T423](#)

Application Details

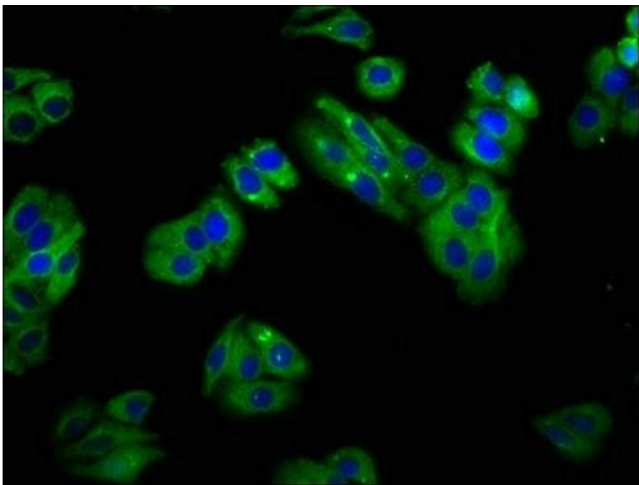
Application Notes: Recommended dilution: WB:1:500-1:5000, IHC:1:100-1:300, IF:1:50-1:200,

Restrictions: For Research Use only

Handling

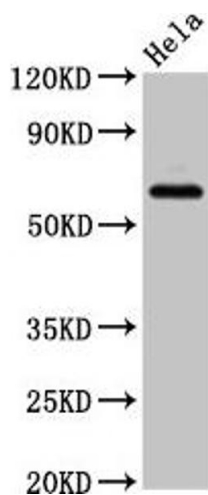
Format:	Liquid
Buffer:	Preservative: 0.03 % Proclin 300 Constituents: 50 % Glycerol, 0.01M PBS, pH 7.4
Preservative:	ProClin
Precaution of Use:	This product contains ProClin: a POISONOUS AND HAZARDOUS SUBSTANCE which should be handled by trained staff only.
Storage:	-20 °C,-80 °C
Storage Comment:	Upon receipt, store at -20°C or -80°C. Avoid repeated freeze.

Images



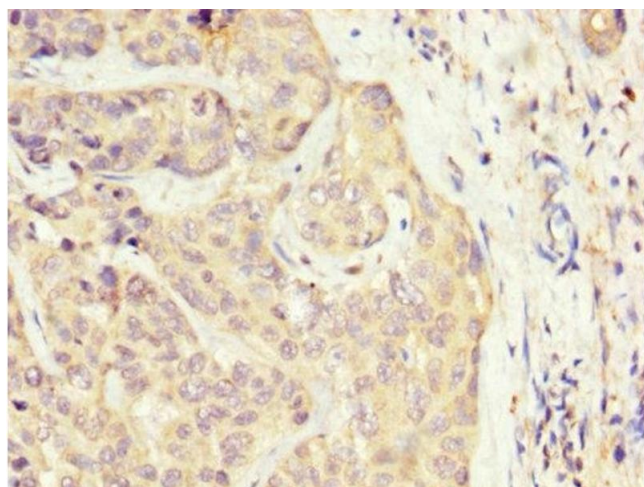
Immunofluorescence

Image 1. Immunofluorescence staining of HepG2 cells with ABIN7170156 at 1:100, counter-stained with DAPI. The cells were fixed in 4 % formaldehyde, permeabilized using 0.2 % Triton X-100 and blocked in 10 % normal Goat Serum. The cells were then incubated with the antibody overnight at 4 °C. The secondary antibody was Alexa Fluor 488-conjugated AffiniPure Goat Anti-Rabbit IgG(H+L).



Western Blotting

Image 2. Western Blot Positive WB detected in: HeLa whole cell lysate All lanes: SLC22A25 antibody at 6.8 µg/mL Secondary Goat polyclonal to rabbit IgG at 1/50000 dilution Predicted band size: 62 kDa Observed band size: 62 kDa



Immunohistochemistry

Image 3. IHC image of ABIN7170156 diluted at 1:300 and staining in paraffin-embedded human liver cancer performed on a Leica Bond™ system. After dewaxing and hydration, antigen retrieval was mediated by high pressure in a citrate buffer (pH 6.0). Section was blocked with 10 % normal goat serum 30 min at RT. Then primary antibody (1 % BSA) was incubated at 4 °C overnight. The primary is detected by a biotinylated secondary antibody and visualized using an HRP conjugated SP system.