

Datasheet for ABIN7170165
anti-SLC22A8 antibody (AA 473-542)[Go to Product page](#)

3 Images

Overview

Quantity:	100 µL
Target:	SLC22A8
Binding Specificity:	AA 473-542
Reactivity:	Human
Host:	Rabbit
Clonality:	Polyclonal
Conjugate:	This SLC22A8 antibody is un-conjugated
Application:	Western Blotting (WB), Immunohistochemistry (IHC), ELISA

Product Details

Immunogen:	Recombinant Human Solute carrier family 22 member 8 protein (473-542AA)
Isotype:	IgG
Cross-Reactivity:	Human, Mouse
Purification:	Antigen Affinity Purified

Target Details

Target:	SLC22A8
Alternative Name:	SLC22A8 (SLC22A8 Products)
Background:	Background: Plays an important role in the excretion/detoxification of endogenous and exogenous organic anions, especially from the brain and kidney. Involved in the transport

Target Details

basolateral of steviol, fexofenadine. Transports benzylpenicillin (PCG), estrone-3-sulfate (E1S), cimetidine (CMD), 2,4-dichloro-phenoxyacetate (2,4-D), p-amino-hippurate (PAH), acyclovir (ACV) and ochratoxin (OTA).

Aliases: hOAT3 antibody, OAT3 antibody, Organic anion transporter 3 antibody, S22A8_HUMAN antibody, SLC22A8 antibody, Solute carrier family 22 (organic anion transporter), member 8 antibody, Solute carrier family 22 member 8 antibody

UniProt: [Q8TCC7](#)

Application Details

Application Notes: Recommended dilution: WB:1:1000-1:5000, IHC:1:20-1:200,

Restrictions: For Research Use only

Handling

Format: Liquid

Buffer: PBS with 0.02 % sodium azide, 50 % glycerol, pH 7.3.

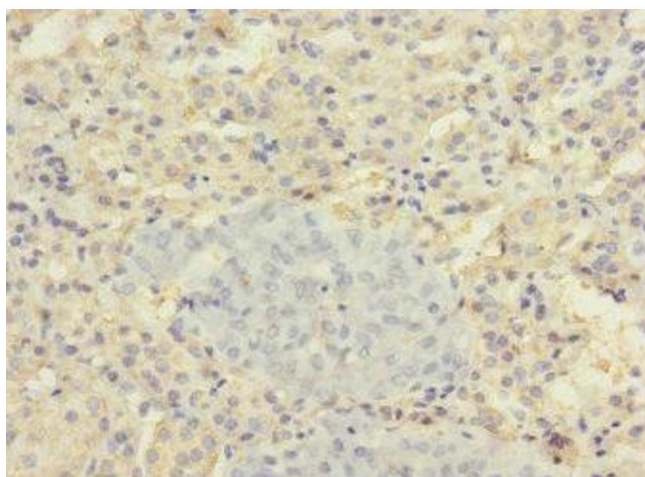
Preservative: Sodium azide

Precaution of Use: This product contains Sodium azide: a POISONOUS AND HAZARDOUS SUBSTANCE which should be handled by trained staff only.

Storage: -20 °C,-80 °C

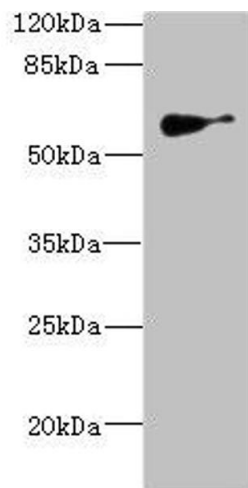
Storage Comment: Upon receipt, store at -20°C or -80°C. Avoid repeated freeze.

Images



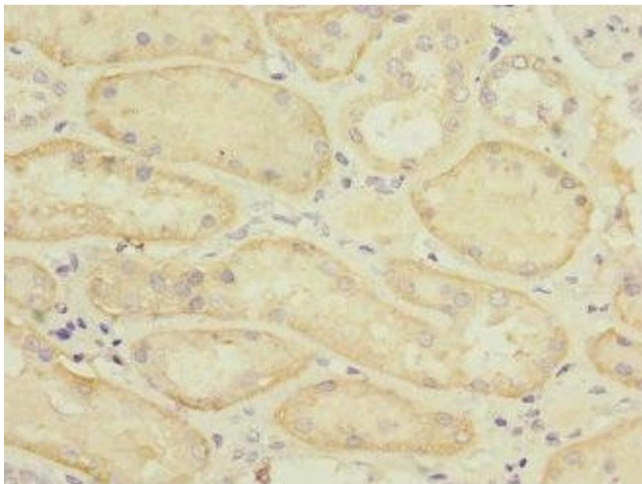
Immunohistochemistry

Image 1. Immunohistochemistry of paraffin-embedded human adrenal gland tissue using ABIN7170165 at dilution of 1:100



Western Blotting

Image 2. Western blot All lanes: SLC22A8antibody IgG at 1.62 µg/mL + Mouse kidney tissue Secondary Goat polyclonal to rabbit IgG at 1/10000 dilution Predicted band size: 60, 61, 47, 12, 50 kDa Observed band size: 60 kDa



Immunohistochemistry

Image 3. Immunohistochemistry of paraffin-embedded human kidney tissue using ABIN7170165 at dilution of 1:100