

Datasheet for ABIN7170191
anti-SLC25A36 antibody (AA 58-110)[Go to Product page](#)

4 Images

Overview

Quantity:	100 µg
Target:	SLC25A36
Binding Specificity:	AA 58-110
Reactivity:	Human
Host:	Rabbit
Clonality:	Polyclonal
Conjugate:	This SLC25A36 antibody is un-conjugated
Application:	ELISA, Western Blotting (WB), Immunohistochemistry (IHC), Immunofluorescence (IF)

Product Details

Immunogen:	Recombinant Human Solute carrier family 25 member 36 protein (58-110AA)
Isotype:	IgG
Cross-Reactivity:	Human
Purification:	>95%, Protein G purified

Target Details

Target:	SLC25A36
Alternative Name:	SLC25A36 (SLC25A36 Products)
Background:	Background: Mitochondrial transporter that imports/exports pyrimidine nucleotides into and from mitochondria. Transports preferentially cytosine and uracil (deoxy)nucleoside mono-, di-,

Target Details

and triphosphates by uniport and antiport mechanism. Also transports guanine but not adenine (deoxy)nucleotides. Is inhibited strongly by pyridoxal 5'-phosphate, 4,7-diphenyl-1,10-phenanthroline, tannic acid, and mercurials (mercury dichloride, Mersalyl acid, p-hydroxymercuribenzoate). Participates in mitochondrial genome maintenance, regulation of mitochondrial membrane potential and mitochondrial respiration.

Aliases: DKFZp564C053 antibody, FLJ10618 antibody, PNC2 antibody, S2536_HUMAN antibody, SLC25A36 antibody, Solute carrier family 25 (pyrimidine nucleotide carrier), member 36 antibody, Solute carrier family 25 member 36 antibody

UniProt: [Q96CQ1](#)

Application Details

Application Notes: Recommended dilution: WB:1:500-1:2000, IHC:1:20-1:200, IF:1:50-1:200,

Restrictions: For Research Use only

Handling

Format: Liquid

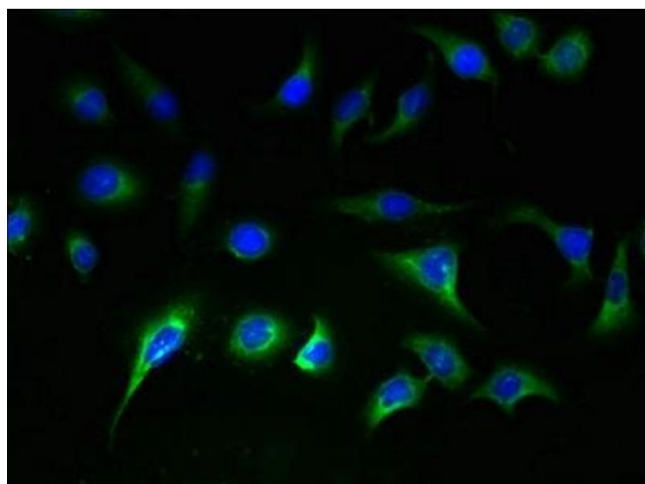
Buffer: Preservative: 0.03 % Proclin 300
Constituents: 50 % Glycerol, 0.01M PBS, PH 7.4

Preservative: ProClin

Precaution of Use: This product contains ProClin: a POISONOUS AND HAZARDOUS SUBSTANCE which should be handled by trained staff only.

Storage: -20 °C,-80 °C

Storage Comment: Upon receipt, store at -20°C or -80°C. Avoid repeated freeze.



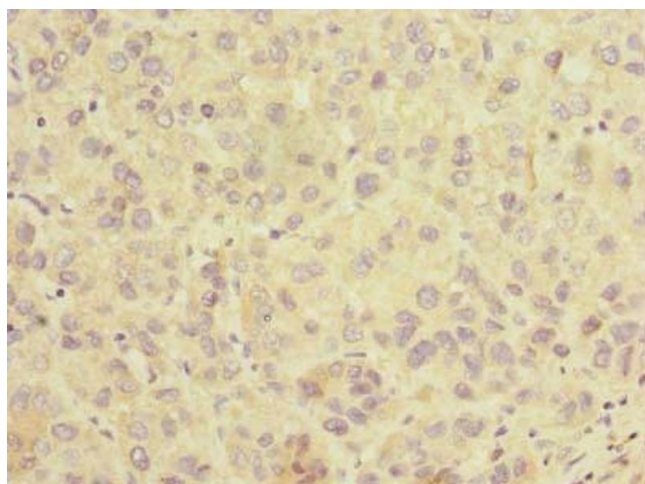
Immunofluorescence

Image 1. Immunofluorescent analysis of A549 cells using ABIN7170191 at dilution of 1:100 and Alexa Fluor 488-conjugated AffiniPure Goat Anti-Rabbit IgG(H+L)



Western Blotting

Image 2. Western blot All lanes: SLC25A36 antibody at 4 μ g/mL Lane 1: A431 whole cell lysate Lane 2: A549 whole cell lysate Secondary Goat polyclonal to rabbit IgG at 1/10000 dilution Predicted band size: 35, 15, 18 kDa Observed band size: 35 kDa



Immunohistochemistry

Image 3. Immunohistochemistry of paraffin-embedded human liver cancer using ABIN7170191 at dilution of 1:100

Please check the [product details page](#) for more images. Overall 4 images are available for ABIN7170191.