

Datasheet for ABIN7170215  
**anti-Slc26a9 antibody (AA 551-660)**[Go to Product page](#)

## 2 Images

## Overview

Quantity:	100 µg
Target:	Slc26a9
Binding Specificity:	AA 551-660
Reactivity:	Human
Host:	Rabbit
Clonality:	Polyclonal
Conjugate:	This Slc26a9 antibody is un-conjugated
Application:	ELISA, Immunofluorescence (IF), Immunohistochemistry (IHC)

## Product Details

Immunogen:	Recombinant Human Solute carrier family 26 member 9 protein (551-660AA)
Isotype:	IgG
Cross-Reactivity:	Human
Purification:	>95%, Protein G purified

## Target Details

Target:	Slc26a9
Alternative Name:	SLC26A9 ( <a href="#">Slc26a9 Products</a> )
Background:	Background: DIDS- and thiosulfate- sensitive anion exchanger mediating chloride, sulfate and oxalate transport. Mediates chloride/bicarbonate exchange or chloride-independent

## Target Details

bicarbonate extrusion thus assuring bicarbonate secretion. Inhibited by ammonium and thiosulfate.

Aliases: SLC26A9 antibody, Solute carrier family 26 member 9 antibody, Anion transporter/exchanger protein 9 antibody

UniProt: [Q7LBE3](#)

## Application Details

Application Notes: Recommended dilution: IHC:1:200-1:500, IF:1:50-1:200,

Restrictions: For Research Use only

## Handling

Format: Liquid

Buffer: Preservative: 0.03 % Proclin 300  
Constituents: 50 % Glycerol, 0.01M PBS, pH 7.4

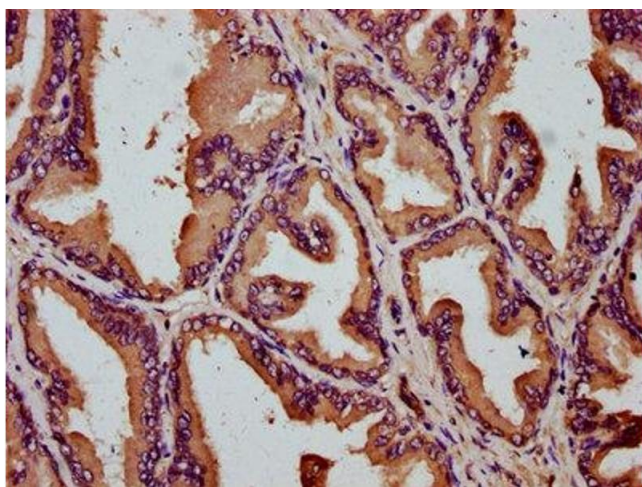
Preservative: ProClin

Precaution of Use: This product contains ProClin: a POISONOUS AND HAZARDOUS SUBSTANCE which should be handled by trained staff only.

Storage: -20 °C,-80 °C

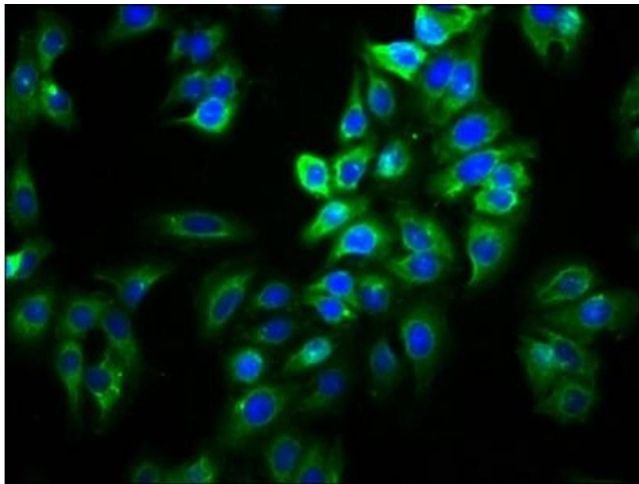
Storage Comment: Upon receipt, store at -20°C or -80°C. Avoid repeated freeze.

## Images



### Immunohistochemistry

**Image 1.** IHC image of ABIN7170215 diluted at 1:200 and staining in paraffin-embedded human prostate tissue performed on a Leica Bond™ system. After dewaxing and hydration, antigen retrieval was mediated by high pressure in a citrate buffer (pH 6.0). Section was blocked with 10% normal goat serum 30min at RT. Then primary antibody (1% BSA) was incubated at 4°C overnight. The primary is detected by a biotinylated secondary antibody and visualized using an HRP conjugated SP system.



#### Immunofluorescence

**Image 2.** Immunofluorescence staining of HepG2 cells with ABIN7170215 at 1:66, counter-stained with DAPI. The cells were fixed in 4% formaldehyde, permeabilized using 0.2% Triton X-100 and blocked in 10% normal Goat Serum. The cells were then incubated with the antibody overnight at 4°C. The secondary antibody was Alexa Fluor 488-conjugated AffiniPure Goat Anti-Rabbit IgG(H+L).