



[Go to Product page](#)

Datasheet for ABIN7170227

anti-SLC35D3 antibody (AA 304-416)

2 Images

Overview

Quantity:	100 µg
Target:	SLC35D3
Binding Specificity:	AA 304-416
Reactivity:	Human
Host:	Rabbit
Clonality:	Polyclonal
Conjugate:	This SLC35D3 antibody is un-conjugated
Application:	ELISA, Immunofluorescence (IF), Immunohistochemistry (IHC)

Product Details

Immunogen:	Recombinant Human Solute carrier family 35 member D3 protein (304-416AA)
Isotype:	IgG
Cross-Reactivity:	Human
Purification:	>95%, Protein G purified

Target Details

Target:	SLC35D3
Alternative Name:	SLC35D3 (SLC35D3 Products)
Background:	Background: May play a role in hemostasis as a regulator of the biosynthesis of platelet-dense granules.

Target Details

Aliases: bA55K22.3 antibody, Frc fringe like 1 antibody, FRCL1 antibody, Fringe connection like protein 1 antibody, Fringe connection-like protein 1 antibody, MGC102873 antibody, S35D3_HUMAN antibody, SLC35D3 antibody, Solute carrier family 35 member D3 antibody

UniProt: [Q5M8T2](#)

Application Details

Application Notes: Recommended dilution: IHC:1:500-1:1000, IF:1:50-1:200,

Restrictions: For Research Use only

Handling

Format: Liquid

Buffer: Preservative: 0.03 % Proclin 300
Constituents: 50 % Glycerol, 0.01M PBS, pH 7.4

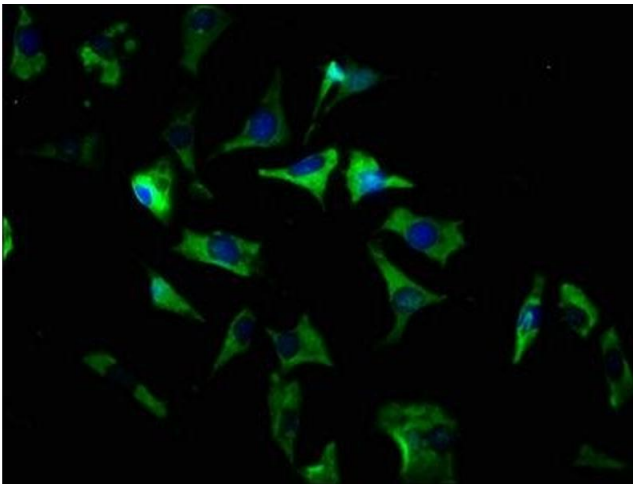
Preservative: ProClin

Precaution of Use: This product contains ProClin: a POISONOUS AND HAZARDOUS SUBSTANCE which should be handled by trained staff only.

Storage: -20 °C, -80 °C

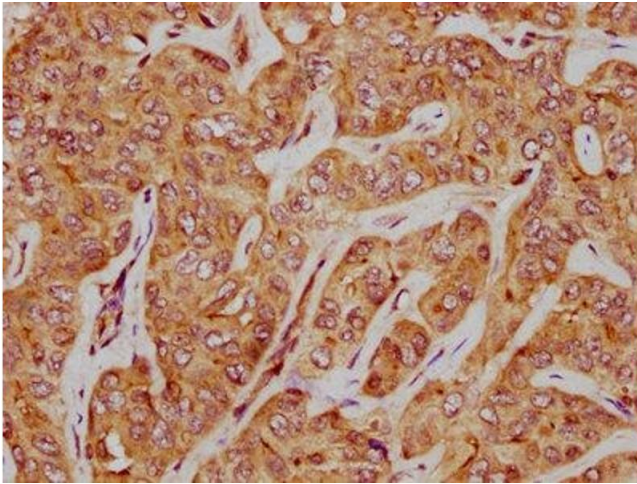
Storage Comment: Upon receipt, store at -20°C or -80°C. Avoid repeated freeze.

Images



Immunofluorescence

Image 1. Immunofluorescence staining of SH-SY5Y cells with ABIN7170227 at 1:166, counter-stained with DAPI. The cells were fixed in 4% formaldehyde, permeabilized using 0.2% Triton X-100 and blocked in 10% normal Goat Serum. The cells were then incubated with the antibody overnight at 4°C. The secondary antibody was Alexa Fluor 488-conjugated AffiniPure Goat Anti-Rabbit IgG(H+L).



Immunohistochemistry

Image 2. IHC image of ABIN7170227 diluted at 1:500 and staining in paraffin-embedded human liver cancer performed on a Leica Bond™ system. After dewaxing and hydration, antigen retrieval was mediated by high pressure in a citrate buffer (pH 6.0). Section was blocked with 10% normal goat serum 30min at RT. Then primary antibody (1% BSA) was incubated at 4°C overnight. The primary is detected by a biotinylated secondary antibody and visualized using an HRP conjugated SP system.