

Datasheet for ABIN7170239  
**anti-SLC35F6 antibody (AA 337-371)**



[Go to Product page](#)

4 Images

### Overview

Quantity:	100 µg
Target:	SLC35F6
Binding Specificity:	AA 337-371
Reactivity:	Human
Host:	Rabbit
Clonality:	Polyclonal
Conjugate:	This SLC35F6 antibody is un-conjugated
Application:	ELISA, Immunohistochemistry (IHC), Immunofluorescence (IF)

### Product Details

Immunogen:	Recombinant Human Solute carrier family 35 member F6 protein (337-371AA)
Isotype:	IgG
Cross-Reactivity:	Human
Purification:	>95%, Protein G purified

### Target Details

Target:	SLC35F6
Alternative Name:	SLC35F6 ( <a href="#">SLC35F6 Products</a> )
Background:	Background: Involved in the maintenance of mitochondrial membrane potential in pancreatic ductal adenocarcinoma (PDAC) cells. Promotes pancreatic ductal adenocarcinoma (PDAC) cell

## Target Details

growth. May play a role as a nucleotide-sugar transporter.

Aliases: SLC35F6 antibody, C2orf18 antibody, UNQ3047/PRO9863 antibody, Solute carrier family 35 member F6 antibody, ANT2-binding protein antibody, ANT2BP antibody, Transport and Golgi organization 9 homolog antibody

UniProt: [Q8N357](#)

## Application Details

Application Notes: Recommended dilution: IHC:1:20-1:200, IF:1:50-1:200,

Restrictions: For Research Use only

## Handling

Format: Liquid

Buffer: Preservative: 0.03 % Proclin 300  
Constituents: 50 % Glycerol, 0.01M PBS, PH 7.4

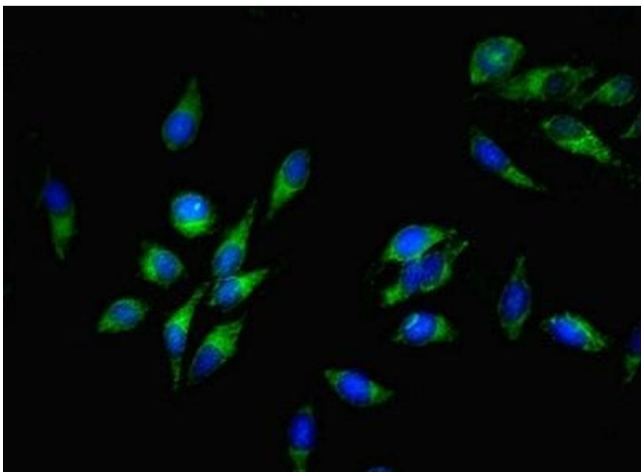
Preservative: ProClin

Precaution of Use: This product contains ProClin: a POISONOUS AND HAZARDOUS SUBSTANCE which should be handled by trained staff only.

Storage: -20 °C,-80 °C

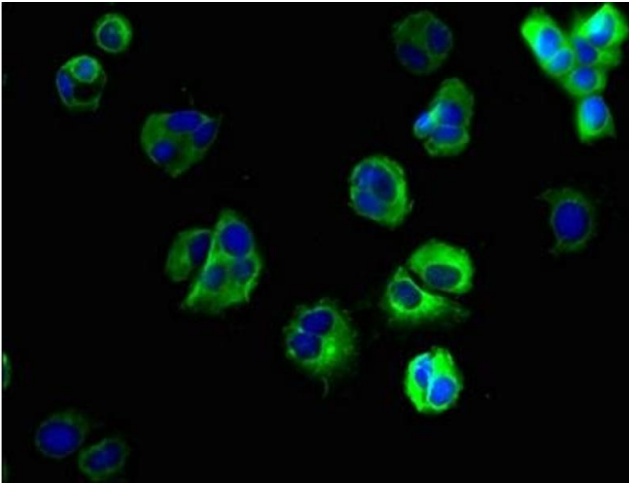
Storage Comment: Upon receipt, store at -20°C or -80°C. Avoid repeated freeze.

## Images



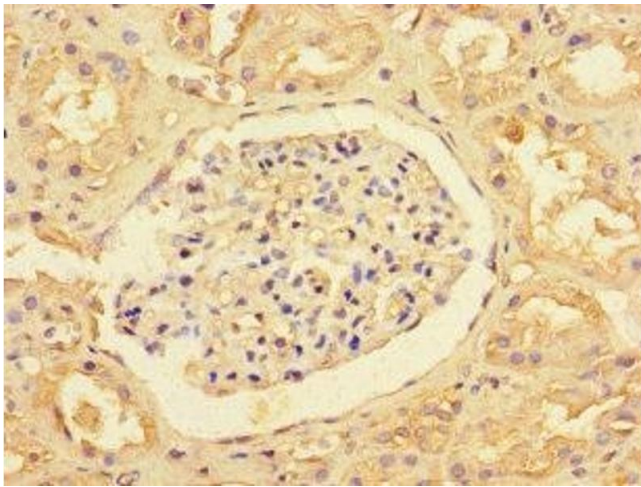
### Immunofluorescence

**Image 1.** Immunofluorescent analysis of HeLa cells using ABIN7170239 at dilution of 1:100 and Alexa Fluor 488-conjugated AffiniPure Goat Anti-Rabbit IgG(H+L)



#### Immunofluorescence

**Image 2.** Immunofluorescent analysis of MCF-7 cells using ABIN7170239 at dilution of 1:100 and Alexa Fluor 488-conjugated AffiniPure Goat Anti-Rabbit IgG(H+L)



#### Immunohistochemistry

**Image 3.** Immunohistochemistry of paraffin-embedded human kidney tissue using ABIN7170239 at dilution of 1:100

Please check the [product details page](#) for more images. Overall 4 images are available for ABIN7170239.