



[Go to Product page](#)

Datasheet for ABIN7170259

anti-SLC45A3 antibody (AA 408-487)

3 Images

Overview

Quantity:	100 µg
Target:	SLC45A3
Binding Specificity:	AA 408-487
Reactivity:	Human
Host:	Rabbit
Clonality:	Polyclonal
Conjugate:	This SLC45A3 antibody is un-conjugated
Application:	ELISA, Immunohistochemistry (IHC), Immunofluorescence (IF)

Product Details

Immunogen:	Recombinant Human Solute carrier family 45 member 3 protein (408-487AA)
Isotype:	IgG
Cross-Reactivity:	Human
Purification:	>95%, Protein G purified

Target Details

Target:	SLC45A3
Alternative Name:	SLC45A3 (SLC45A3 Products)
Background:	Background: plasma membrane, sucrose:proton symporter activity, sugar transmembrane transporter activity, glucose transport, positive regulation of fatty acid biosynthetic process,

Target Details

positive regulation of glucose metabolic process, regulation of oligodendrocyte differentiation, sucrose transport

Aliases: IPCA 2 antibody, IPCA 8 antibody, IPCA6 antibody, PCANAP2 antibody, PCANAP6 antibody, PCANAP8 antibody, Prostate cancer associated gene 2 antibody, Prostate cancer associated gene 6 antibody, Prostate cancer associated gene 8 antibody, Prostate cancer associated protein 2 antibody, Prostate cancer associated protein 6 antibody, Prostate cancer associated protein 8 antibody, Prostate cancer-associated protein 6 antibody, Prostein antibody, PRST antibody, S45A3_HUMAN antibody, Slc45a3 antibody, Solute carrier family 45 member 3 antibody

UniProt: [Q96JT2](#)

Application Details

Application Notes: Recommended dilution: IHC:1:200-1:500, IF:1:50-1:200,

Restrictions: For Research Use only

Handling

Format: Liquid

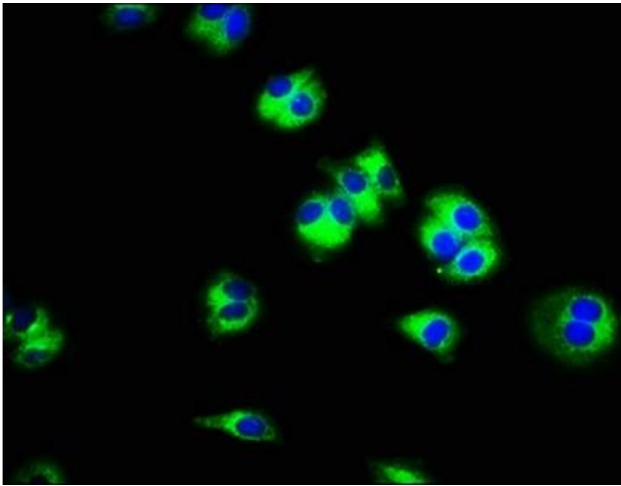
Buffer: Preservative: 0.03 % Proclin 300
Constituents: 50 % Glycerol, 0.01M PBS, pH 7.4

Preservative: ProClin

Precaution of Use: This product contains ProClin: a POISONOUS AND HAZARDOUS SUBSTANCE which should be handled by trained staff only.

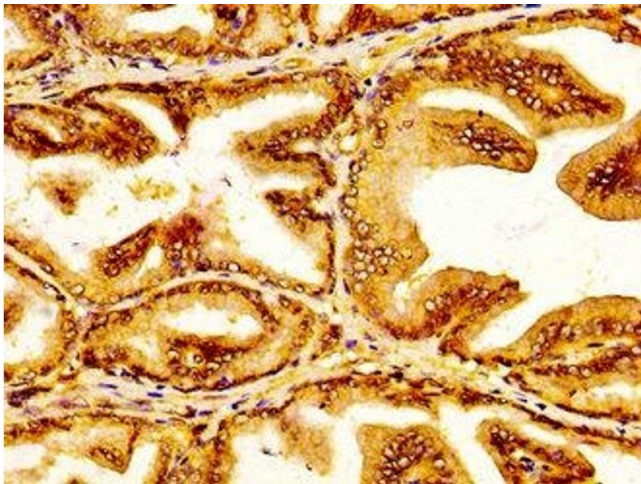
Storage: -20 °C,-80 °C

Storage Comment: Upon receipt, store at -20°C or -80°C. Avoid repeated freeze.



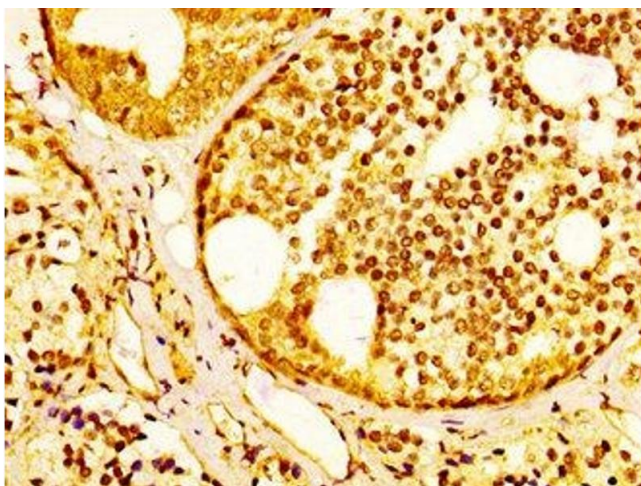
Immunofluorescence

Image 1. Immunofluorescence staining of HepG2 cells with ABIN7170259 at 1:100, counter-stained with DAPI. The cells were fixed in 4% formaldehyde, permeabilized using 0.2% Triton X-100 and blocked in 10% normal Goat Serum. The cells were then incubated with the antibody overnight at 4°C. The secondary antibody was Alexa Fluor 488-conjugated AffiniPure Goat Anti-Rabbit IgG(H+L).



Immunohistochemistry

Image 2. IHC image of ABIN7170259 diluted at 1:300 and staining in paraffin-embedded human prostate tissue performed on a Leica Bond™ system. After dewaxing and hydration, antigen retrieval was mediated by high pressure in a citrate buffer (pH 6.0). Section was blocked with 10% normal goat serum 30min at RT. Then primary antibody (1% BSA) was incubated at 4°C overnight. The primary is detected by a biotinylated secondary antibody and visualized using an HRP conjugated SP system.



Immunohistochemistry

Image 3. IHC image of ABIN7170259 diluted at 1:300 and staining in paraffin-embedded human prostate cancer performed on a Leica Bond™ system. After dewaxing and hydration, antigen retrieval was mediated by high pressure in a citrate buffer (pH 6.0). Section was blocked with 10% normal goat serum 30min at RT. Then primary antibody (1% BSA) was incubated at 4°C overnight. The primary is detected by a biotinylated secondary antibody and visualized using an HRP conjugated SP system.