



[Go to Product page](#)

Datasheet for ABIN7170263
anti-SLC46A3 antibody (AA 26-73)

4 Images

Overview

Quantity:	100 µg
Target:	SLC46A3
Binding Specificity:	AA 26-73
Reactivity:	Human
Host:	Rabbit
Clonality:	Polyclonal
Conjugate:	This SLC46A3 antibody is un-conjugated
Application:	ELISA, Western Blotting (WB), Immunohistochemistry (IHC), Immunofluorescence (IF)

Product Details

Immunogen:	Recombinant Human Solute carrier family 46 member 3 protein (26-73AA)
Isotype:	IgG
Cross-Reactivity:	Human
Purification:	>95%, Protein G purified

Target Details

Target:	SLC46A3
Alternative Name:	SLC46A3 (SLC46A3 Products)
Background:	SLC46A3 antibody, FKSG16 antibody, Solute carrier family 46 member 3 antibody
UniProt:	Q7Z3Q1

Application Details

Application Notes: Recommended dilution: WB:1:500-1:2000, IHC:1:20-1:200, IF:1:50-1:200,

Restrictions: For Research Use only

Handling

Format: Liquid

Buffer: Preservative: 0.03 % Proclin 300
Constituents: 50 % Glycerol, 0.01M PBS, PH 7.4

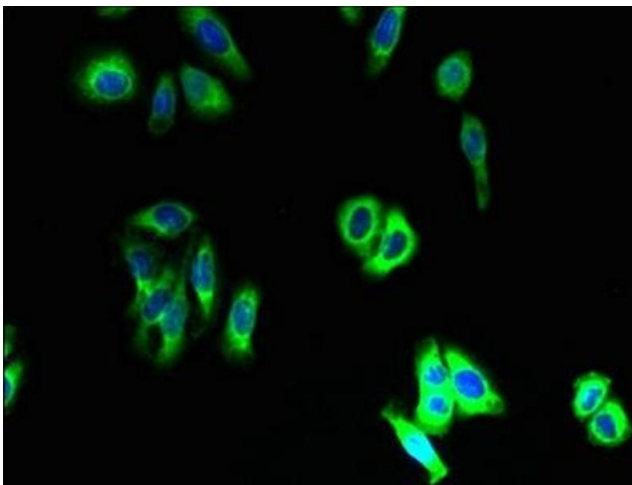
Preservative: ProClin

Precaution of Use: This product contains ProClin: a POISONOUS AND HAZARDOUS SUBSTANCE which should be handled by trained staff only.

Storage: -20 °C,-80 °C

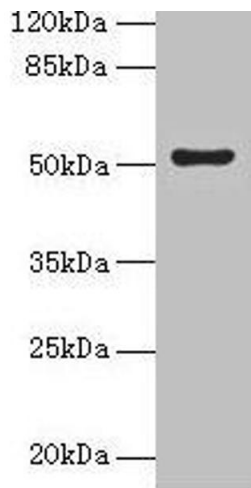
Storage Comment: Upon receipt, store at -20°C or -80°C. Avoid repeated freeze.

Images



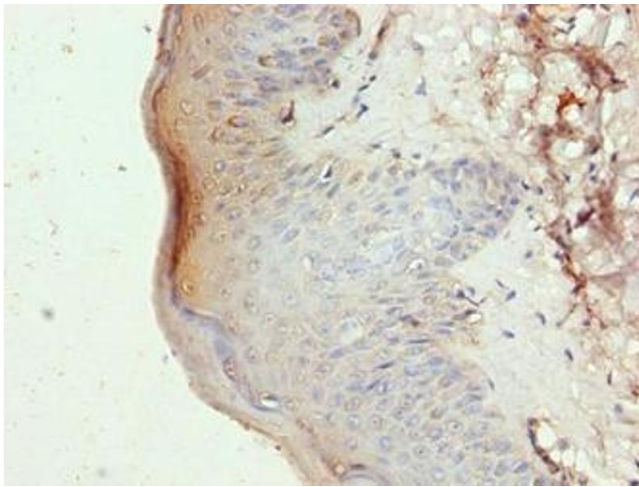
Immunofluorescence

Image 1. Immunofluorescent analysis of HepG2 cells using ABIN7170263 at dilution of 1:100 and Alexa Fluor 488-conjugated AffiniPure Goat Anti-Rabbit IgG(H+L)



Western Blotting

Image 2. Western blot All lanes: SLC46A3 antibody at 4 μ g/mL + Jurkat whole cell lysate Secondary Goat polyclonal to rabbit IgG at 1/10000 dilution Predicted band size: 52, 43 kDa Observed band size: 52 kDa



Immunohistochemistry

Image 3. Immunohistochemistry of paraffin-embedded human skin tissue using ABIN7170263 at dilution of 1:100

Please check the [product details page](#) for more images. Overall 4 images are available for ABIN7170263.