

Datasheet for ABIN7170279

anti-Solute Carrier Family 52 (Riboflavin Transporter), Member 3 (SLC52A3) (AA 159-220) antibody[Go to Product page](#)

4 Images

Overview

Quantity:	100 µg
Target:	Solute Carrier Family 52 (Riboflavin Transporter), Member 3 (SLC52A3)
Binding Specificity:	AA 159-220
Reactivity:	Human
Host:	Rabbit
Clonality:	Polyclonal
Conjugate:	Un-conjugated
Application:	ELISA, Immunohistochemistry (IHC), Western Blotting (WB), Immunofluorescence (IF)

Product Details

Immunogen:	Recombinant Human Solute carrier family 52, riboflavin transporter, member 3 protein (159-220AA)
Isotype:	IgG
Cross-Reactivity:	Human, Mouse
Purification:	>95%, Protein G purified

Target Details

Target:	Solute Carrier Family 52 (Riboflavin Transporter), Member 3 (SLC52A3)
Alternative Name:	SLC52A3 (SLC52A3 Products)
Background:	Background: Transporter for riboflavin, which must be obtained as a nutrient via intestinal

Target Details

absorption. Riboflavin transport is Na(+)-independent at low pH but significantly reduced by Na(+) depletion under neutral pH conditions. Activity is strongly inhibited by riboflavin analogs, such as lumiflavin, flavin mononucleotide (FMN), flavin adenine dinucleotide (FAD), by methylene blue, and to a lesser extent by amiloride.

Aliases: bA371L19.1 antibody, BVVLS antibody, BVVLS1 antibody, C20orf54 antibody, C20orf54 provided by HGNC antibody, Chromosome 20 open reading frame 54 antibody, hRFT2 antibody, member 3 antibody, MGC10698 antibody, RFT2 antibody, RFVT3 antibody, Riboflavin transporter 2 antibody, riboflavin transporter antibody, riboflavin transporter, member 3 antibody, S52A3_HUMAN antibody, Slc52a3 antibody, solute carrier family 52 (riboflavin transporter), member 3 antibody, Solute carrier family 52 antibody, solute carrier family 52, riboflavin transporter, member 3 antibody

UniProt: [Q9NQ40](#)

Pathways: [Sensory Perception of Sound](#)

Application Details

Application Notes: Recommended dilution: WB:1:1000-1:5000, IHC:1:20-1:200, IF:1:50-1:200,

Restrictions: For Research Use only

Handling

Format: Liquid

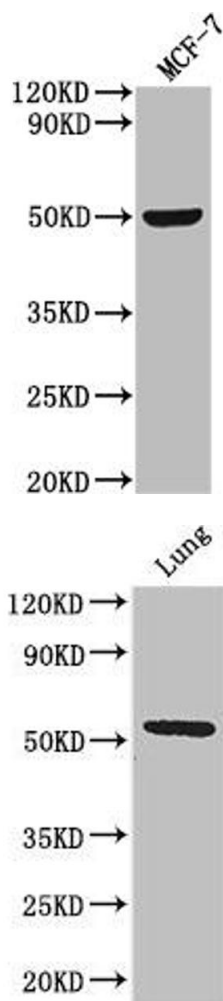
Buffer: Preservative: 0.03 % Proclin 300
Constituents: 50 % Glycerol, 0.01M PBS, PH 7.4

Preservative: ProClin

Precaution of Use: This product contains ProClin: a POISONOUS AND HAZARDOUS SUBSTANCE which should be handled by trained staff only.

Storage: -20 °C, -80 °C

Storage Comment: Upon receipt, store at -20°C or -80°C. Avoid repeated freeze.

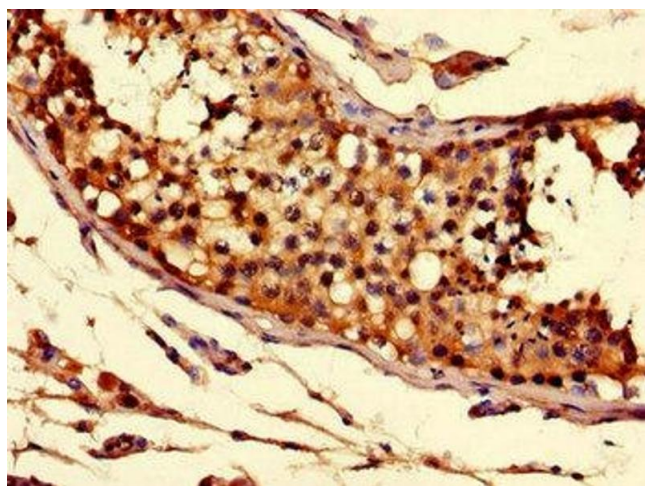


Western Blotting

Image 1. Western Blot Positive WB detected in: MCF-7 whole cell lysate All lanes: SLC52A3 antibody at 1:2000 Secondary Goat polyclonal to rabbit IgG at 1/50000 dilution Predicted band size: 51, 46 kDa Observed band size: 51 kDa

Western Blotting

Image 2. Western Blot Positive WB detected in: Mouse lung tissue All lanes: Q9NQ4 antibody at 3.2 µg/mL Secondary Goat polyclonal to rabbit IgG at 1/50000 dilution Predicted band size: 51, 46 kDa Observed band size: 51 kDa



Immunohistochemistry

Image 3. Immunohistochemistry of paraffin-embedded human testis tissue using ABIN7170279 at dilution of 1:100

Please check the [product details page](#) for more images. Overall 4 images are available for ABIN7170279.