

Datasheet for ABIN7170335  
**anti-Sortilin 1 antibody (AA 328-457)**



[Go to Product page](#)

2 Images

## Overview

Quantity:	100 µg
Target:	Sortilin 1 (SORT1)
Binding Specificity:	AA 328-457
Reactivity:	Human
Host:	Rabbit
Clonality:	Polyclonal
Conjugate:	This Sortilin 1 antibody is un-conjugated
Application:	ELISA, Immunohistochemistry (IHC)

## Product Details

Immunogen:	Recombinant Human Sortilin protein (328-457AA)
Isotype:	IgG
Cross-Reactivity:	Human
Purification:	>95%, Protein G purified

## Target Details

Target:	Sortilin 1 (SORT1)
Alternative Name:	SORT1 ( <a href="#">SORT1 Products</a> )
Background:	Background: Functions as a sorting receptor in the Golgi compartment and as a clearance receptor on the cell surface. Required for protein transport from the Golgi apparatus to the

## Target Details

---

lysosomes by a pathway that is independent of the mannose-6-phosphate receptor (M6PR). Also required for protein transport from the Golgi apparatus to the endosomes. Promotes neuronal apoptosis by mediating endocytosis of the proapoptotic precursor forms of BDNF (proBDNF) and NGFB (proNGFB). Also acts as a receptor for neurotensin. May promote mineralization of the extracellular matrix during osteogenic differentiation by scavenging extracellular LPL. Probably required in adipocytes for the formation of specialized storage vesicles containing the glucose transporter SLC2A4/GLUT4 (GLUT4 storage vesicles, or GSVs). These vesicles provide a stable pool of SLC2A4 and confer increased responsiveness to insulin. May also mediate transport from the endoplasmic reticulum to the Golgi.

Aliases: 100 kDa NT receptor antibody, Glycoprotein 95 antibody, Gp 95 antibody, Gp95 antibody, LDLCQ6 antibody, Neurotensin receptor 3 antibody, NT 3 antibody, NT3 antibody, NTR 3 antibody, NTR3 antibody, OTTHUMP00000013784 antibody, SORT 1 antibody, SORT\_HUMAN antibody, SORT1 (gene name) antibody, Sort1 antibody, Sortilin 1 antibody, Sortilin antibody

---

UniProt: [Q99523](#)

---

Pathways: [Neurotrophin Signaling Pathway](#)

## Application Details

---

Application Notes: Recommended dilution: IHC:1:500-1:1000,

---

Restrictions: For Research Use only

## Handling

---

Format: Liquid

---

Buffer: Preservative: 0.03 % Proclin 300  
Constituents: 50 % Glycerol, 0.01M PBS, pH 7.4

---

Preservative: ProClin

---

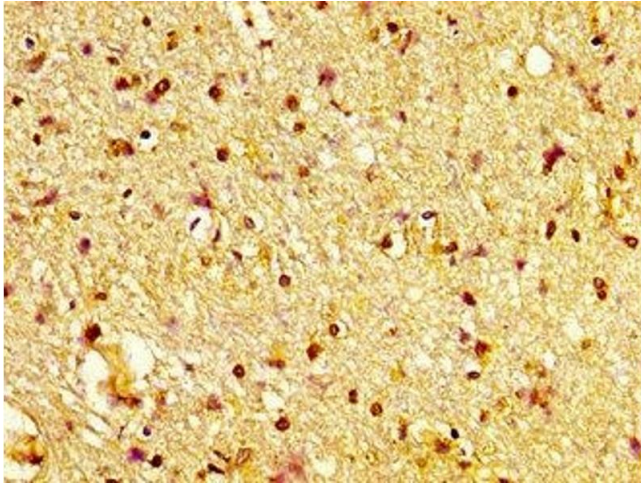
Precaution of Use: This product contains ProClin: a POISONOUS AND HAZARDOUS SUBSTANCE which should be handled by trained staff only.

---

Storage: -20 °C,-80 °C

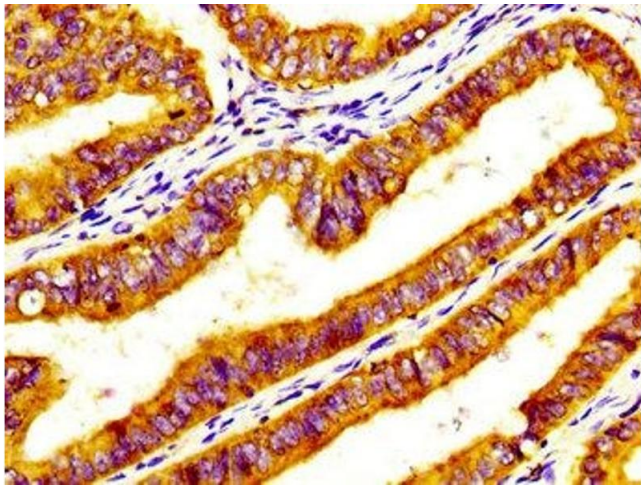
---

Storage Comment: Upon receipt, store at -20°C or -80°C. Avoid repeated freeze.



#### Immunohistochemistry

**Image 1.** IHC image of ABIN7170335 diluted at 1:600 and staining in paraffin-embedded human brain tissue performed on a Leica Bond™ system. After dewaxing and hydration, antigen retrieval was mediated by high pressure in a citrate buffer (pH 6.0). Section was blocked with 10% normal goat serum 30min at RT. Then primary antibody (1% BSA) was incubated at 4°C overnight. The primary is detected by a biotinylated secondary antibody and visualized using an HRP conjugated SP system.



#### Immunohistochemistry

**Image 2.** IHC image of ABIN7170335 diluted at 1:600 and staining in paraffin-embedded human endometrial cancer performed on a Leica Bond™ system. After dewaxing and hydration, antigen retrieval was mediated by high pressure in a citrate buffer (pH 6.0). Section was blocked with 10% normal goat serum 30min at RT. Then primary antibody (1% BSA) was incubated at 4°C overnight. The primary is detected by a biotinylated secondary antibody and visualized using an HRP conjugated SP system.