

Datasheet for ABIN7170339
anti-SORL1 antibody (AA 525-744)[Go to Product page](#)

1 Image

Overview

Quantity:	100 µg
Target:	SORL1
Binding Specificity:	AA 525-744
Reactivity:	Human
Host:	Rabbit
Clonality:	Polyclonal
Conjugate:	This SORL1 antibody is un-conjugated
Application:	ELISA, Immunohistochemistry (IHC)

Product Details

Immunogen:	Recombinant Human Sortilin-related receptor protein (525-744AA)
Isotype:	IgG
Cross-Reactivity:	Human
Purification:	>95%, Protein G purified

Target Details

Target:	SORL1
Alternative Name:	SORL1 (SORL1 Products)
Background:	Background: Likely to be a multifunctional endocytic receptor, that may be implicated in the uptake of lipoproteins and of proteases. Binds LDL, the major cholesterol-carrying lipoprotein of

Target Details

plasma, and transports it into cells by endocytosis. Binds the receptor-associated protein (RAP). Could play a role in cell-cell interaction. Involved in APP trafficking to and from the Golgi apparatus. It probably acts as a sorting receptor that protects APP from trafficking to late endosome and from processing into amyloid beta, thereby reducing the burden of amyloidogenic peptide formation. Involved in the regulation of smooth muscle cells migration, probably through PLAUR binding and decreased internalization.

Aliases: C11orf32 antibody, FLJ21930 antibody, FLJ39258 antibody, gp250 antibody, LDLR relative with 11 ligand binding repeats antibody, LDLR relative with 11 ligand-binding repeats antibody, Low density lipoprotein receptor relative with 11 ligand binding repeats antibody, Low-density lipoprotein receptor relative with 11 ligand-binding repeats antibody, LR 11 antibody, LR11 antibody, LRP 9 antibody, LRP9 antibody, Mosaic protein LR11 antibody, SORL 1 antibody, SORL_HUMAN antibody, SORL1 antibody, SorLA 1 antibody, SorLA antibody, SorLA-1 antibody, Sortilin related receptor antibody, Sortilin related receptor L(DLR class) A repeats containing antibody, Sortilin-related receptor antibody, Sorting protein related receptor containing LDLR class A repeats antibody, Sorting protein-related receptor containing LDLR class A repeats antibody

UniProt: [Q92673](#)

Pathways: [Smooth Muscle Cell Migration](#)

Application Details

Application Notes: Recommended dilution: IHC:1:20-1:200,

Restrictions: For Research Use only

Handling

Format: Liquid

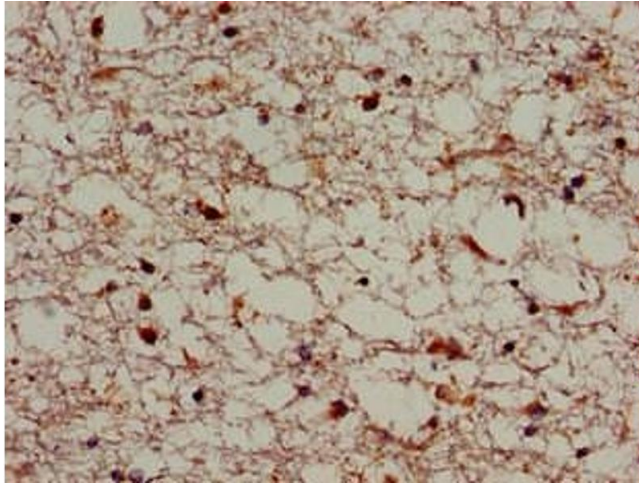
Buffer: Preservative: 0.03 % Proclin 300
Constituents: 50 % Glycerol, 0.01M PBS, pH 7.4

Preservative: ProClin

Precaution of Use: This product contains ProClin: a POISONOUS AND HAZARDOUS SUBSTANCE which should be handled by trained staff only.

Storage: -20 °C,-80 °C

Storage Comment: Upon receipt, store at -20°C or -80°C. Avoid repeated freeze.



Immunohistochemistry

Image 1. Immunohistochemistry of paraffin-embedded human brain tissue using ABIN7170339 at dilution of 1:100