

Datasheet for ABIN7170412  
**anti-OBFC2A antibody (AA 1-204)**[Go to Product page](#)

## 1 Image

## Overview

Quantity:	100 µg
Target:	OBFC2A
Binding Specificity:	AA 1-204
Reactivity:	Human
Host:	Rabbit
Clonality:	Polyclonal
Conjugate:	This OBFC2A antibody is un-conjugated
Application:	ELISA, Western Blotting (WB)

## Product Details

Immunogen:	Recombinant Human SOSS complex subunit B2 protein (1-204AA)
Isotype:	IgG
Cross-Reactivity:	Human
Purification:	>95%, Protein G purified

## Target Details

Target:	OBFC2A
Alternative Name:	NABP1 ( <a href="#">OBFC2A Products</a> )
Background:	Background: Component of the SOSS complex, a multiprotein complex that functions downstream of the MRN complex to promote DNA repair and G2/M checkpoint. In the SOSS

## Target Details

complex, acts as a sensor of single-stranded DNA that binds to single-stranded DNA, in particular to polypyrimidines. The SOSS complex associates with DNA lesions and influences diverse endpoints in the cellular DNA damage response including cell-cycle checkpoint activation, recombinational repair and maintenance of genomic stability. Required for efficient homologous recombination-dependent repair of double-strand breaks (DSBs) and ATM-dependent signaling pathways.

Aliases: FLJ13624 antibody, FLJ22833 antibody, hSSB2 antibody, MGC111163 antibody, Nabp1 antibody, Nucleic acid-binding protein 1 antibody, OBFC2A antibody, Oligonucleotide/oligosaccharide binding fold containing 2A antibody, Oligonucleotide/oligosaccharide binding fold containing protein 2A antibody, Oligonucleotide/oligosaccharide-binding fold-containing protein 2A antibody, Sensor of single strand DNA complex subunit B2 antibody, Sensor of single-strand DNA complex subunit B2 antibody, Sensor of ssDNA subunit B2 antibody, Single stranded DNA binding protein 2 antibody, Single-stranded DNA-binding protein 2 antibody, SOSB2\_HUMAN antibody, SOSS B2 antibody, SOSS complex subunit B2 antibody, SOSS-B2 antibody, SSB2 antibody

UniProt: [Q96AH0](#)

## Application Details

Application Notes: Recommended dilution: WB:1:1000-1:5000,

Restrictions: For Research Use only

## Handling

Format: Liquid

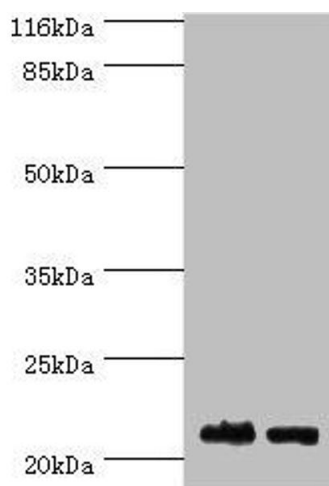
Buffer: Preservative: 0.03 % Proclin 300  
Constituents: 50 % Glycerol, 0.01M PBS, PH 7.4

Preservative: ProClin

Precaution of Use: This product contains ProClin: a POISONOUS AND HAZARDOUS SUBSTANCE which should be handled by trained staff only.

Storage: -20 °C, -80 °C

Storage Comment: Upon receipt, store at -20°C or -80°C. Avoid repeated freeze.



#### Western Blotting

**Image 1.** Western blot All lanes: NABP1 antibody at 2  $\mu$ g/mL Lane 1: Hela whole cell lysate Lane 2: Jurkat whole cell lysate Secondary Goat polyclonal to rabbit IgG at 1/10000 dilution Predicted band size: 23, 14, 15 kDa Observed band size: 23 kDa