

Datasheet for ABIN7170424  
**anti-SPG11 antibody (AA 2019-2318)**



[Go to Product page](#)

1 Image

## Overview

Quantity:	100 µg
Target:	SPG11
Binding Specificity:	AA 2019-2318
Reactivity:	Human
Host:	Rabbit
Clonality:	Polyclonal
Conjugate:	This SPG11 antibody is un-conjugated
Application:	ELISA, Immunofluorescence (IF)

## Product Details

Immunogen:	Recombinant Human Spatacsin protein (2019-2318AA)
Isotype:	IgG
Cross-Reactivity:	Human
Purification:	>95%, Protein G purified

## Target Details

Target:	SPG11
Alternative Name:	SPG11 ( <a href="#">SPG11 Products</a> )
Background:	Background: cytoplasm, cytoplasmic vesicle, extracellular exosome, lysosomal membrane, nucleolus, plasma membrane

## Target Details

Aliases: Colorectal carcinoma associated protein antibody, Colorectal carcinoma-associated protein antibody, DKFZp762B1512 antibody, FLJ21439 antibody, KIAA1840 antibody, Spastic paraplegia 11 (autosomal recessive) antibody, Spastic paraplegia 11 antibody, Spastic paraplegia 11 protein antibody, Spatacsin antibody, SPG 11 antibody, Spg11 antibody, SPTCS\_HUMAN antibody

UniProt: [Q96J17](#)

## Application Details

Application Notes: Recommended dilution: IF:1:50-1:200,

Restrictions: For Research Use only

## Handling

Format: Liquid

Buffer: Preservative: 0.03 % Proclin 300  
Constituents: 50 % Glycerol, 0.01M PBS, PH 7.4

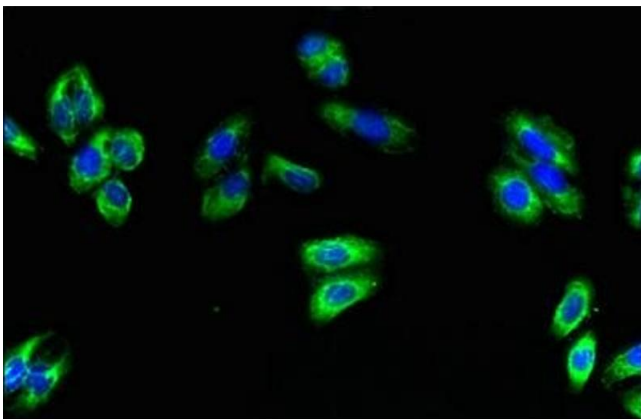
Preservative: ProClin

Precaution of Use: This product contains ProClin: a POISONOUS AND HAZARDOUS SUBSTANCE which should be handled by trained staff only.

Storage: -20 °C,-80 °C

Storage Comment: Upon receipt, store at -20°C or -80°C. Avoid repeated freeze.

## Images



### Immunofluorescence

**Image 1.** Immunofluorescent analysis of HepG2 cells using ABIN7170424 at dilution of 1:100 and Alexa Fluor 488-conjugated AffiniPure Goat Anti-Rabbit IgG(H+L)