

Datasheet for ABIN7170460
anti-SMCP antibody (AA 1-116)[Go to Product page](#)

1 Image

Overview

Quantity:	100 µg
Target:	SMCP
Binding Specificity:	AA 1-116
Reactivity:	Human
Host:	Rabbit
Clonality:	Polyclonal
Conjugate:	This SMCP antibody is un-conjugated
Application:	ELISA, Immunohistochemistry (IHC)

Product Details

Immunogen:	Recombinant Human Sperm mitochondrial-associated cysteine-rich protein (1-116AA)
Isotype:	IgG
Cross-Reactivity:	Human
Purification:	>95%, Protein G purified

Target Details

Target:	SMCP
Alternative Name:	SMCP (SMCP Products)
Background:	Background: Involved in sperm motility. Its absence is associated with genetic background dependent male infertility. Infertility may be due to reduced sperm motility in the female

Target Details

reproductive tract and inability to penetrate the oocyte zona pellucida

Aliases: HSMCSGEN1 antibody, MCS antibody, MCSP antibody, MCSP_HUMAN antibody, Mitochondrial capsule selenoprotein antibody, SMCP antibody, Sperm mitochondria associated cysteine rich protein antibody, Sperm mitochondrial-associated cysteine-rich protein antibody

UniProt: [P49901](#)

Application Details

Application Notes: Recommended dilution: IHC:1:20-1:200,

Restrictions: For Research Use only

Handling

Format: Liquid

Buffer: Preservative: 0.03 % Proclin 300
Constituents: 50 % Glycerol, 0.01M PBS, PH 7.4

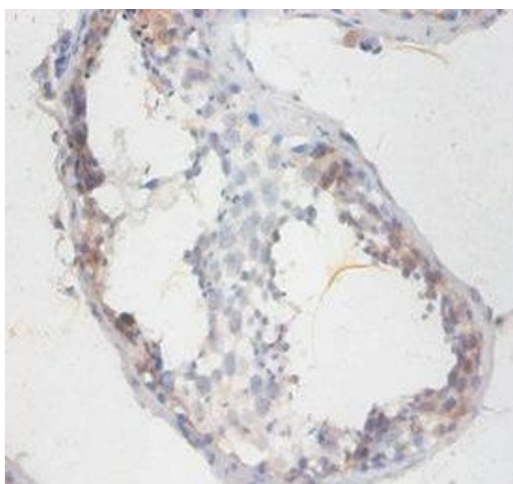
Preservative: ProClin

Precaution of Use: This product contains ProClin: a POISONOUS AND HAZARDOUS SUBSTANCE which should be handled by trained staff only.

Storage: -20 °C,-80 °C

Storage Comment: Upon receipt, store at -20°C or -80°C. Avoid repeated freeze.

Images



Immunohistochemistry

Image 1. Immunohistochemistry of paraffin-embedded human testis tissue using ABIN7170460 at dilution of 1:100