

Datasheet for ABIN7170478
anti-SPAG5 antibody (AA 1-300)[Go to Product page](#)

2 Images

Overview

Quantity:	100 µL
Target:	SPAG5
Binding Specificity:	AA 1-300
Reactivity:	Human
Host:	Rabbit
Clonality:	Polyclonal
Conjugate:	This SPAG5 antibody is un-conjugated
Application:	Western Blotting (WB), ELISA, Immunohistochemistry (IHC)

Product Details

Immunogen:	Recombinant Human Sperm-associated antigen 5 protein (1-300AA)
Isotype:	IgG
Cross-Reactivity:	Human
Purification:	Antigen Affinity Purified

Target Details

Target:	SPAG5
Alternative Name:	SPAG5 (SPAG5 Products)
Background:	Background: Essential component of the mitotic spindle required for normal chromosome segregation and progression into anaphase. Required for chromosome alignment, normal

Target Details

timing of sister chromatid segregation, and maintenance of spindle pole architecture. In complex with SKAP, promotes stable microtubule-kinetochore attachments. May contribute to the regulation of separase activity. May regulate AURKA localization to mitotic spindle, but not to centrosomes and CCNB1 localization to both mitotic spindle and centrosomes. In non-mitotic cells, upon stress induction, inhibits mammalian target of rapamycin complex 1 (mTORC1) association and recruits the mTORC1 component RPTOR to stress granules (SGs), thereby preventing mTORC1 hyperactivation-induced apoptosis. May enhance GSK3B-mediated phosphorylation of other substrates, such as MAPT/TAU.

Aliases: Astrin antibody, Deepest antibody, hMAP 126 antibody, hMAP126 antibody, MAP 126 antibody, MAP126 antibody, Mitotic spindle associated protein antibody, Mitotic spindle associated protein p126 antibody, Mitotic spindle coiled coil related protein antibody, Mitotic spindle-associated protein p126 antibody, SPAG 5 antibody, SPAG5 antibody, SPAG5_HUMAN antibody, Sperm associated antigen 5 antibody, Sperm tail protein Spag 5 antibody, Sperm tail protein Spag5 antibody, Sperm-associated antigen 5 antibody

UniProt: [Q96R06](#)

Pathways: [M Phase](#)

Application Details

Application Notes: Recommended dilution: WB:1:500-1:2000, IHC:1:20-1:200,

Restrictions: For Research Use only

Handling

Format: Liquid

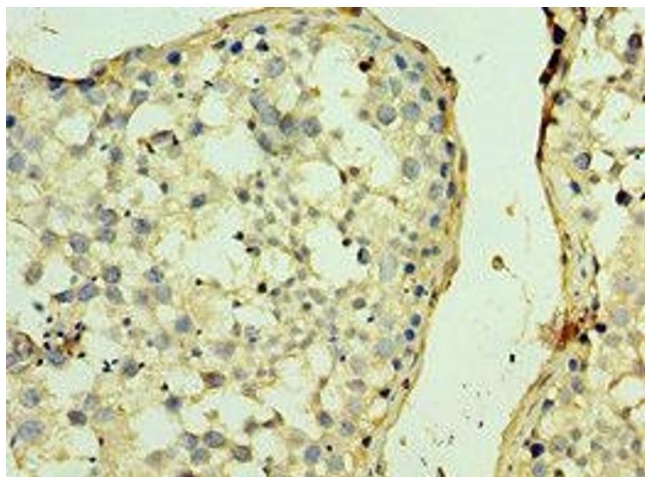
Buffer: PBS with 0.02 % sodium azide, 50 % glycerol, pH 7.3.

Preservative: Sodium azide

Precaution of Use: This product contains Sodium azide: a POISONOUS AND HAZARDOUS SUBSTANCE which should be handled by trained staff only.

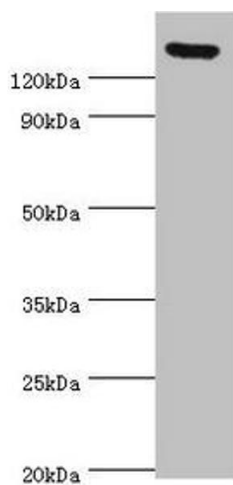
Storage: -20 °C,-80 °C

Storage Comment: Upon receipt, store at -20°C or -80°C. Avoid repeated freeze.



Immunohistochemistry

Image 1. Immunohistochemistry of paraffin-embedded human testis tissue using ABIN7170478 at dilution of 1:100



Western Blotting

Image 2. Western blot All lanes: SPAG5 antibody at 2 µg/mL
Secondary Goat polyclonal to rabbit IgG at 1/10000 dilution
Predicted band size: 134 kDa Observed band size: 134 kDa