

Datasheet for ABIN7170480
anti-SPAG6 antibody (AA 343-428)[Go to Product page](#)

1 Image

Overview

Quantity:	100 µg
Target:	SPAG6
Binding Specificity:	AA 343-428
Reactivity:	Human
Host:	Rabbit
Clonality:	Polyclonal
Conjugate:	This SPAG6 antibody is un-conjugated
Application:	ELISA, Immunofluorescence (IF)

Product Details

Immunogen:	Recombinant Human Sperm-associated antigen 6 protein (343-428AA)
Isotype:	IgG
Cross-Reactivity:	Human
Purification:	>95%, Protein G purified

Target Details

Target:	SPAG6
Alternative Name:	SPAG6 (SPAG6 Products)
Background:	Background: Important for structural integrity of the central apparatus in the sperm tail and for flagellar motility.

Target Details

Aliases: axoneme central apparatus protein antibody, DKFZp434I153 antibody, MGC26276 antibody, PF16 antibody, PF16 protein homolog antibody, Protein PF16 homolog antibody, Repro SA 1 antibody, Repro-SA-1 antibody, SPAG6 antibody, SPAG6_HUMAN antibody, Sperm associated antigen 6 antibody, Sperm flagellar protein antibody, Sperm-associated antigen 6 antibody

UniProt: [O75602](#)

Application Details

Application Notes: Recommended dilution: IF:1:50-1:200,

Restrictions: For Research Use only

Handling

Format: Liquid

Buffer: Preservative: 0.03 % Proclin 300
Constituents: 50 % Glycerol, 0.01M PBS, pH 7.4

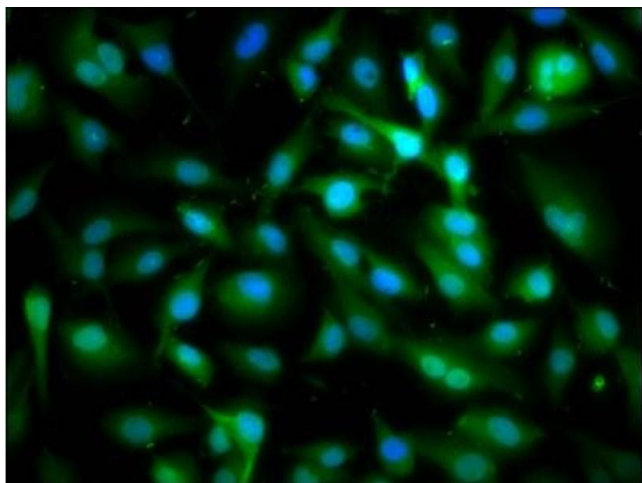
Preservative: ProClin

Precaution of Use: This product contains ProClin: a POISONOUS AND HAZARDOUS SUBSTANCE which should be handled by trained staff only.

Storage: -20 °C,-80 °C

Storage Comment: Upon receipt, store at -20°C or -80°C. Avoid repeated freeze.

Images



Immunofluorescence

Image 1. Immunofluorescence staining of U251 cells with ABIN7170480 at 1:166, counter-stained with DAPI. The cells were fixed in 4% formaldehyde, permeabilized using 0.2% Triton X-100 and blocked in 10% normal Goat Serum. The cells were then incubated with the antibody overnight at 4°C. The secondary antibody was Alexa Fluor 488-conjugated AffiniPure Goat Anti-Rabbit IgG(H+L).