



[Go to Product page](#)

Datasheet for ABIN7170488  
**anti-STPG2 antibody (AA 201-459)**

2 Images

### Overview

Quantity:	100 µg
Target:	STPG2
Binding Specificity:	AA 201-459
Reactivity:	Human
Host:	Rabbit
Clonality:	Polyclonal
Conjugate:	This STPG2 antibody is un-conjugated
Application:	ELISA, Immunohistochemistry (IHC), Western Blotting (WB)

### Product Details

Immunogen:	Recombinant Human Sperm-tail PG-rich repeat-containing protein 2 protein (201-459AA)
Isotype:	IgG
Cross-Reactivity:	Human
Purification:	>95%, Protein G purified

### Target Details

Target:	STPG2
Alternative Name:	STPG2 ( <a href="#">STPG2 Products</a> )
Background:	STPG2 antibody, C4orf37 antibody, Sperm-tail PG-rich repeat-containing protein 2 antibody
UniProt:	<a href="#">Q8N412</a>

## Application Details

---

Application Notes: Recommended dilution: WB:1:1000-1:5000, IHC:1:20-1:200,

Restrictions: For Research Use only

## Handling

---

Format: Liquid

Buffer: Preservative: 0.03 % Proclin 300  
Constituents: 50 % Glycerol, 0.01M PBS, PH 7.4

Preservative: ProClin

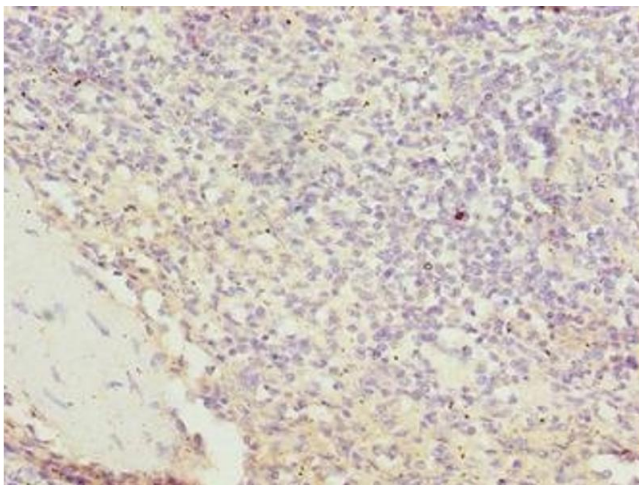
Precaution of Use: This product contains ProClin: a POISONOUS AND HAZARDOUS SUBSTANCE which should be handled by trained staff only.

Storage: -20 °C,-80 °C

Storage Comment: Upon receipt, store at -20°C or -80°C. Avoid repeated freeze.

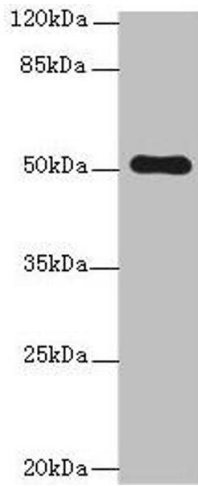
## Images

---



### Immunohistochemistry

**Image 1.** Immunohistochemistry of paraffin-embedded human spleen tissue using ABIN7170488 at dilution of 1:100



### Western Blotting

**Image 2.** Western blot All lanes: STPG2 antibody at 0.8  $\mu$ g/mL + HL60 whole cell lysate Secondary Goat polyclonal to rabbit at 1/10000 dilution Predicted band size: 51 kDa Observed band size: 51 kDa