

Datasheet for ABIN7170492
anti-SPEM1 antibody (AA 50-309)



[Go to Product page](#)

1 Image

Overview

Quantity:	100 µg
Target:	SPEM1
Binding Specificity:	AA 50-309
Reactivity:	Human
Host:	Rabbit
Clonality:	Polyclonal
Conjugate:	This SPEM1 antibody is un-conjugated
Application:	ELISA, Immunohistochemistry (IHC)

Product Details

Immunogen:	Recombinant Human Spermatid maturation protein 1 protein (50-309AA)
Isotype:	IgG
Cross-Reactivity:	Human
Purification:	>95%, Protein G purified

Target Details

Target:	SPEM1
Alternative Name:	SPEM1 (SPEM1 Products)
Background:	Background: Required for proper cytoplasm removal during spermatogenesis. Aliases: SPEM1 antibody, C17orf83 antibody, Spermatid maturation protein 1 antibody

Target Details

UniProt: [Q8N4L4](#)

Application Details

Application Notes: Recommended dilution: IHC:1:20-1:200,

Restrictions: For Research Use only

Handling

Format: Liquid

Buffer: Preservative: 0.03 % Proclin 300
Constituents: 50 % Glycerol, 0.01M PBS, PH 7.4

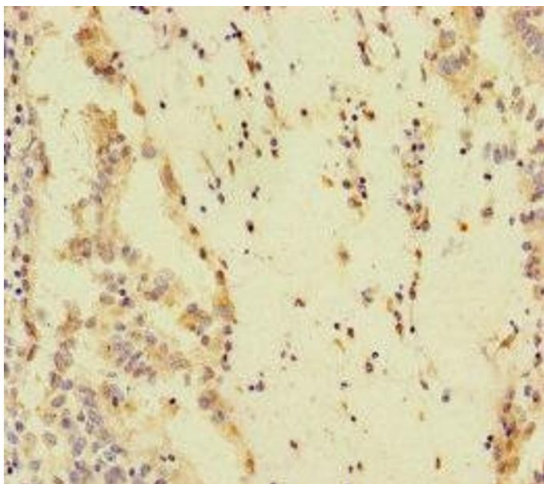
Preservative: ProClin

Precaution of Use: This product contains ProClin: a POISONOUS AND HAZARDOUS SUBSTANCE which should be handled by trained staff only.

Storage: -20 °C,-80 °C

Storage Comment: Upon receipt, store at -20°C or -80°C. Avoid repeated freeze.

Images



Immunohistochemistry

Image 1. Immunohistochemistry of paraffin-embedded human lung cancer using ABIN7170492 at dilution of 1:100