

Datasheet for ABIN7170541

anti-Spermidine Synthase antibody (AA 17-302)



[Go to Product page](#)

3 Images

Overview

Quantity:	100 µg
Target:	Spermidine Synthase (SRM)
Binding Specificity:	AA 17-302
Reactivity:	Human
Host:	Rabbit
Clonality:	Polyclonal
Conjugate:	This Spermidine Synthase antibody is un-conjugated
Application:	Western Blotting (WB), ELISA, Immunohistochemistry (IHC)

Product Details

Immunogen:	Recombinant Human Spermidine synthase protein (17-302AA)
Isotype:	IgG
Cross-Reactivity:	Human
Purification:	>95%, Protein G purified

Target Details

Target:	Spermidine Synthase (SRM)
Alternative Name:	SRM (SRM Products)
Background:	OTTHUMP00000002170 antibody, PAPT antibody, Putrescine aminopropyltransferase antibody, SPDSY antibody, SPEE_HUMAN antibody, Spermidine synthase 1 antibody,

Target Details

Spermidine synthase antibody, SPS1 antibody, Srm antibody, SRML1 antibody

UniProt: [P19623](#)

Application Details

Application Notes: Recommended dilution: WB:1:1000-1:5000, IHC:1:20-1:200,

Restrictions: For Research Use only

Handling

Format: Liquid

Buffer: Preservative: 0.03 % Proclin 300
Constituents: 50 % Glycerol, 0.01M PBS, PH 7.4

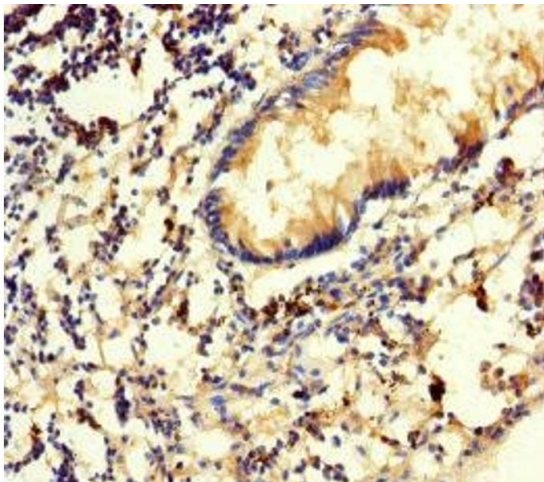
Preservative: ProClin

Precaution of Use: This product contains ProClin: a POISONOUS AND HAZARDOUS SUBSTANCE which should be handled by trained staff only.

Storage: -20 °C,-80 °C

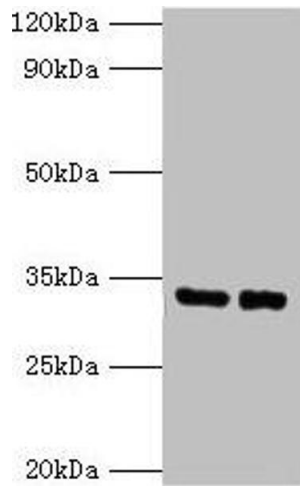
Storage Comment: Upon receipt, store at -20°C or -80°C. Avoid repeated freeze.

Images



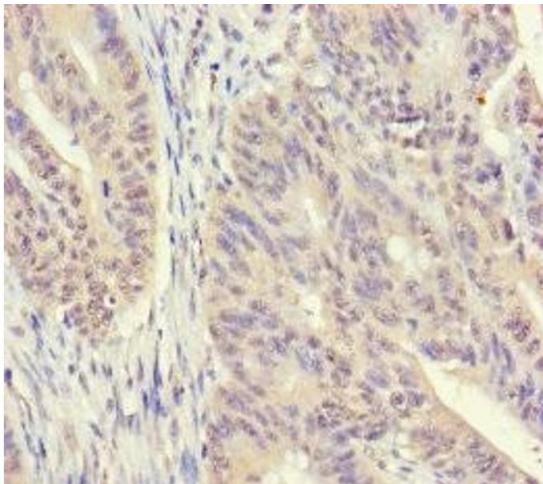
Immunohistochemistry

Image 1. Immunohistochemistry of paraffin-embedded human appendix tissue using ABIN7170541 at dilution of 1:100



Western Blotting

Image 2. Western blot All lanes: SRM antibody at 2 µg/mL
Lane 1: EC109 whole cell lysate Lane 2: 293T whole cell lysate
Secondary Goat polyclonal to rabbit IgG at 1/15000 dilution
Predicted band size: 34 kDa Observed band size: 34 kDa



Immunohistochemistry

Image 3. Immunohistochemistry of paraffin-embedded human colon cancer using ABIN7170541 at dilution of 1:100