



[Go to Product page](#)

Datasheet for ABIN7170557
anti-SMPD3 antibody (AA 401-655)

2 Images

Overview

Quantity:	100 µg
Target:	SMPD3
Binding Specificity:	AA 401-655
Reactivity:	Human
Host:	Rabbit
Clonality:	Polyclonal
Conjugate:	This SMPD3 antibody is un-conjugated
Application:	ELISA, Immunohistochemistry (IHC), Immunoprecipitation (IP)

Product Details

Immunogen:	Recombinant Human Sphingomyelin phosphodiesterase 3 protein (401-655AA)
Isotype:	IgG
Cross-Reactivity:	Human, Mouse
Purification:	>95%, Protein G purified

Target Details

Target:	SMPD3
Alternative Name:	SMPD3 (SMPD3 Products)
Background:	Background: Catalyzes the hydrolysis of sphingomyelin to form ceramide and phosphocholine. Ceramide mediates numerous cellular functions, such as apoptosis and growth arrest, and is

Target Details

capable of regulating these 2 cellular events independently. Also hydrolyzes sphingosylphosphocholine. Regulates the cell cycle by acting as a growth suppressor in confluent cells. Probably acts as a regulator of postnatal development and participates in bone and dentin mineralization.

Aliases: Cca1 antibody, Confluent 3Y1 cell-associated protein 1 antibody, Neutral sphingomyelinase 2 antibody, Neutral sphingomyelinase II antibody, NSMA2_HUMAN antibody, nSMase-2 antibody, nSMase2 antibody, SMPD3 antibody, Sphingomyelin phosphodiesterase 3 antibody, sphingomyelin phosphodiesterase 3, neutral membrane (neutral sphingomyelinase II) antibody

UniProt: [Q9NY59](#)

Pathways: [Hormone Transport](#)

Application Details

Application Notes: Recommended dilution: IHC:1:50-1:200, IP:1:200-1:2000,

Restrictions: For Research Use only

Handling

Format: Liquid

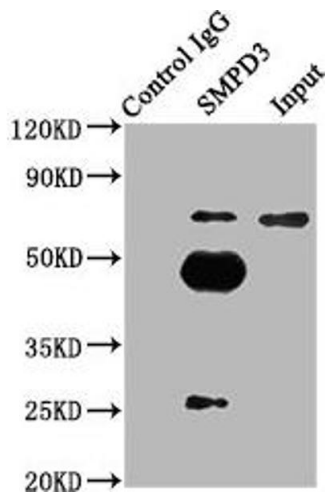
Buffer: Preservative: 0.03 % Proclin 300
Constituents: 50 % Glycerol, 0.01M PBS, PH 7.4

Preservative: ProClin

Precaution of Use: This product contains ProClin: a POISONOUS AND HAZARDOUS SUBSTANCE which should be handled by trained staff only.

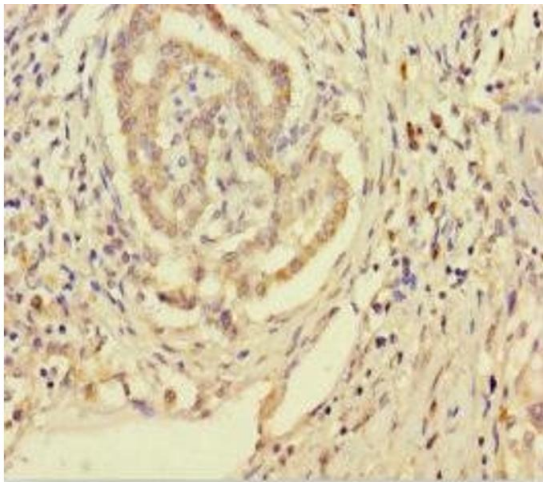
Storage: -20 °C,-80 °C

Storage Comment: Upon receipt, store at -20°C or -80°C. Avoid repeated freeze.



Western Blotting

Image 1. Immunoprecipitating SMPD3 in mouse brain whole cell lysate Lane 1: Rabbit control IgG (1 μ g) instead of ABIN7170557 in mouse brain whole cell lysate. For western blotting, a HRP-conjugated Protein G antibody was used as the secondary antibody (1/2000) Lane 2: ABIN7170557 (6 μ g) + Mouse brain whole cell lysate (500 μ g) Lane 3: Mouse brain whole cell lysate (10 μ g)



Immunohistochemistry

Image 2. Immunohistochemistry of paraffin-embedded human pancreatic cancer using ABIN7170557 at dilution of 1:100