



[Go to Product page](#)

Datasheet for ABIN7170565  
**anti-S1PR1 antibody (AA 311-382)**

5 Images

Overview

Quantity:	100 µg
Target:	S1PR1
Binding Specificity:	AA 311-382
Reactivity:	Human
Host:	Rabbit
Clonality:	Polyclonal
Conjugate:	This S1PR1 antibody is un-conjugated
Application:	Western Blotting (WB), ELISA, Immunofluorescence (IF), Immunohistochemistry (IHC)

Product Details

Immunogen:	Recombinant Human Sphingosine 1-phosphate receptor 1 protein (311-382AA)
Isotype:	IgG
Cross-Reactivity:	Human, Mouse
Purification:	>95%, Protein G purified

Target Details

Target:	S1PR1
Alternative Name:	S1PR1 ( <a href="#">S1PR1 Products</a> )
Background:	Background: G-protein coupled receptor for the bioactive lysosphingolipid sphingosine 1-phosphate (S1P) that seems to be coupled to the G(i) subclass of heteromeric G proteins.

## Target Details

---

Signaling leads to the activation of RAC1, SRC, PTK2/FAK1 and MAP kinases. Plays an important role in cell migration, probably via its role in the reorganization of the actin cytoskeleton and the formation of lamellipodia in response to stimuli that increase the activity of the sphingosine kinase SPHK1. Required for normal chemotaxis toward sphingosine 1-phosphate. Required for normal embryonic heart development and normal cardiac morphogenesis. Plays an important role in the regulation of sprouting angiogenesis and vascular maturation. Inhibits sprouting angiogenesis to prevent excessive sprouting during blood vessel development. Required for normal egress of mature T-cells from the thymus into the blood stream and into peripheral lymphoid organs. Plays a role in the migration of osteoclast precursor cells, the regulation of bone mineralization and bone homeostasis (By similarity). Plays a role in responses to oxidized 1-palmitoyl-2-arachidonoyl-sn-glycero-3-phosphocholine by pulmonary endothelial cells and in the protection against ventilator-induced lung injury.

Aliases: CD363 antibody, CHEDG 1 antibody, CHEDG1 antibody, D1S3362 antibody, ECGF 1 antibody, ECGF1 antibody, EDG 1 antibody, EDG1 antibody, endothelial differentiation G protein coupled receptor 1 antibody, Endothelial differentiation G-protein coupled receptor 1 antibody, Endothelial differentiation sphingolipid G protein coupled receptor 1 antibody, FLJ58121 antibody, G protein coupled sphingolipid receptor antibody, g protein-coupled receptor edg-1 antibody, S1P receptor 1 antibody, S1P receptor Edg 1 antibody, S1P receptor Edg-1 antibody, S1P receptor Edg1 antibody, S1P(1) receptor antibody, S1P1 antibody, s1pr1 antibody, S1PR1\_HUMAN antibody, sphingolipid g-protein-coupled receptor 1 antibody, Sphingosine 1 phosphate receptor Edg 1 antibody, Sphingosine 1 phosphate receptor EDG1 antibody, sphingosine 1-phosphate receptor 1 antibody, Sphingosine 1-phosphate receptor 1 antibody, Sphingosine 1-phosphate receptor Edg-1 antibody, Sphingosine 1phosphate receptor type 1 S1P1 antibody

---

UniProt: [P21453](#)

---

Pathways: [Signaling Events mediated by VEGFR1 and VEGFR2](#)

## Application Details

---

Application Notes: Recommended dilution: WB:1:500-1:5000, IHC:1:20-1:200, IF:1:50-1:200,

---

Restrictions: For Research Use only

## Handling

---

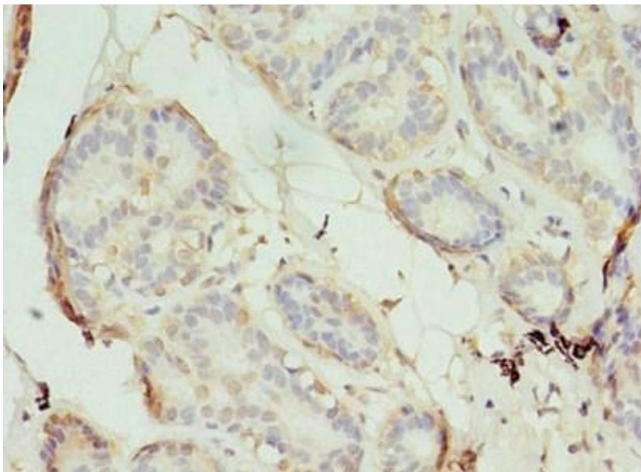
Format: Liquid

---

## Handling

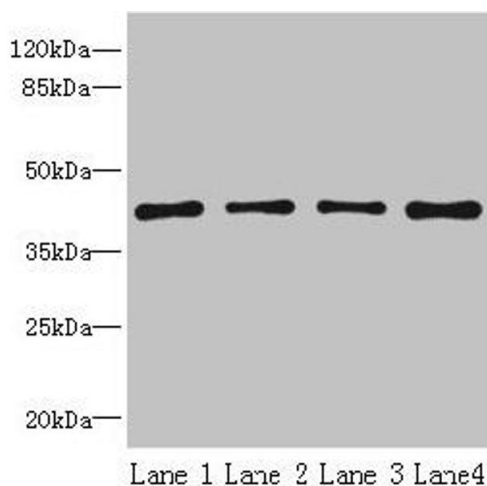
Buffer:	Preservative: 0.03 % Proclin 300 Constituents: 50 % Glycerol, 0.01M PBS, PH 7.4
Preservative:	ProClin
Precaution of Use:	This product contains ProClin: a POISONOUS AND HAZARDOUS SUBSTANCE which should be handled by trained staff only.
Storage:	-20 °C,-80 °C
Storage Comment:	Upon receipt, store at -20°C or -80°C. Avoid repeated freeze.

## Images



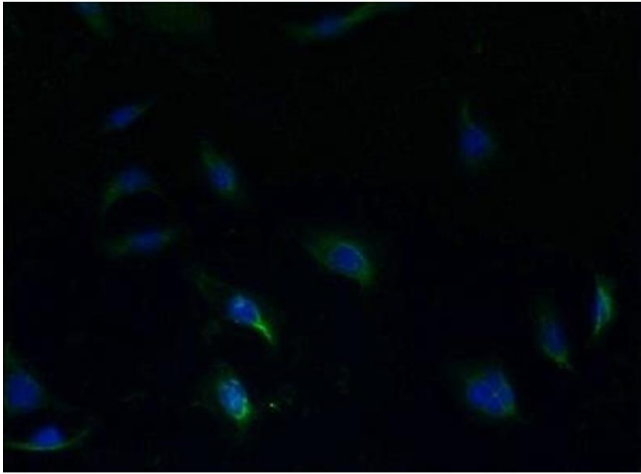
### Immunohistochemistry

**Image 1.** Immunohistochemistry of paraffin-embedded human breast cancer using ABIN7170565 at dilution of 1:100



### Western Blotting

**Image 2.** Western blot All lanes: S1PR1 antibody at 2 µg/mL  
Lane 1: Jurkat whole cell lysate Lane 2: A375 whole cell lysate Lane 3: Mouse thymus tissue Lane 4: HepG2 whole cell lysate Secondary Goat polyclonal to rabbit IgG at 1/10000 dilution Predicted band size: 43 kDa Observed band size: 43 kDa



### Immunofluorescence

**Image 3.** Immunofluorescent analysis of HepG2 cells using ABIN7170565 at dilution of 1:100 and Alexa Fluor 488-conjugated AffiniPure Goat Anti-Rabbit IgG(H+L)

Please check the [product details page](#) for more images. Overall 5 images are available for ABIN7170565.