

Datasheet for ABIN7170569  
**anti-S1PR2 antibody (AA 293-353)**[Go to Product page](#)

## 3 Images

## Overview

|                      |   |
|----------------------|---|
| Quantity:            | 100 µg  |
| Target:              | S1PR2   |
| Binding Specificity: | AA 293-353  |
| Reactivity:          | Human   |
| Host:                | Rabbit  |
| Clonality:           | Polyclonal  |
| Conjugate:           | This S1PR2 antibody is un-conjugated  |
| Application:         | Western Blotting (WB), ELISA, Immunohistochemistry (IHC), Immunofluorescence (IF) |

## Product Details

|                   |  |
|-------------------|--|
| Immunogen:        | Recombinant Human Sphingosine 1-phosphate receptor 2 protein (293-353AA) |
| Isotype:          | IgG  |
| Cross-Reactivity: | Human, Mouse   |
| Purification:     | >95%, Protein G purified   |

## Target Details

|                   |   |
|-------------------|---|
| Target:           | S1PR2   |
| Alternative Name: | S1PR2 ( <a href="#">S1PR2 Products</a> )  |
| Background:       | Background: Receptor for the lysosphingolipid sphingosine 1-phosphate (S1P). S1P is a bioactive lysophospholipid that elicits diverse physiological effect on most types of cells and |

## Target Details

tissues. When expressed in rat HTC4 hepatoma cells, is capable of mediating S1P-induced cell proliferation and suppression of apoptosis.

Aliases: AGR16 antibody, EDG 5 antibody, EDG5 antibody, Endothelial Cell Differentiation Gene 5 antibody, Endothelial differentiation G protein coupled receptor 5 antibody, Endothelial differentiation G-protein coupled receptor 5 antibody, Endothelial differentiation sphingolipid G protein coupled receptor 5 antibody, Gpcr13 antibody, H218 antibody, LPb2 antibody, Lysophospholipid receptor B2 antibody, S1P receptor 2 antibody, S1P receptor Edg 5 antibody, S1P receptor Edg-5 antibody, S1P receptor EDG5 antibody, S1P2 antibody, S1pr2 antibody, S1PR2\_HUMAN antibody, Sphingosine 1 phosphate receptor Edg 5 antibody, Sphingosine 1-phosphate receptor 2 antibody, Sphingosine 1-phosphate receptor Edg-5 antibody

UniProt: [095136](#)

Pathways: [Synaptic Membrane](#)

## Application Details

Application Notes: Recommended dilution: WB:1:500-1:5000, IHC:1:20-1:200, IF:1:200-1:500,

Restrictions: For Research Use only

## Handling

Format: Liquid

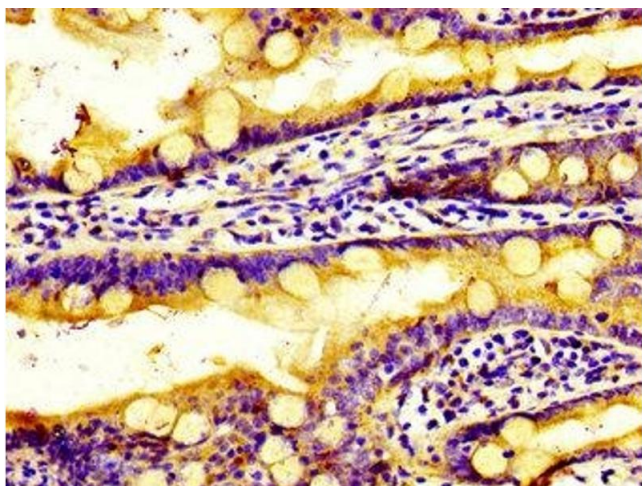
Buffer: Preservative: 0.03 % Proclin 300  
Constituents: 50 % Glycerol, 0.01M PBS, pH 7.4

Preservative: ProClin

Precaution of Use: This product contains ProClin: a POISONOUS AND HAZARDOUS SUBSTANCE which should be handled by trained staff only.

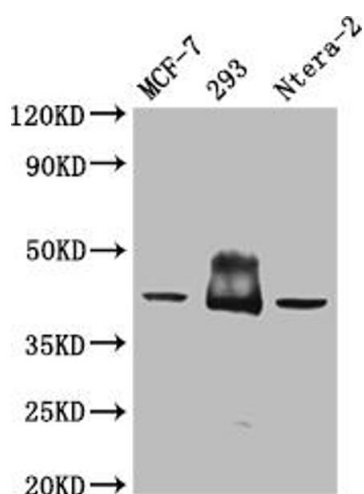
Storage: -20 °C,-80 °C

Storage Comment: Upon receipt, store at -20°C or -80°C. Avoid repeated freeze.



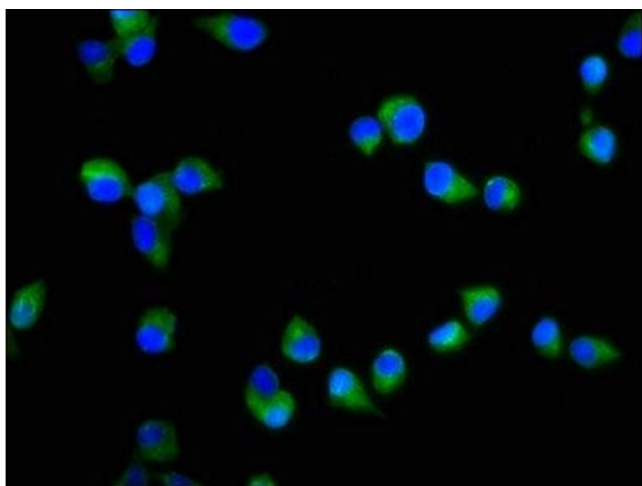
### Immunohistochemistry

**Image 1.** Immunohistochemistry of paraffin-embedded human small intestine tissue using ABIN7170569 at dilution of 1:100



### Western Blotting

**Image 2.** Western Blot Positive WB detected in: Mouse brain tissue All lanes: S1PR2 antibody at 3 µg/mL Secondary Goat polyclonal to rabbit IgG at 1/50000 dilution Predicted band size: 39 kDa Observed band size: 39 kDa



### Immunofluorescence

**Image 3.** Immunofluorescence staining of SH-SY5Y cells with ABIN7170569 at 1:200, counter-stained with DAPI. The cells were fixed in 4 % formaldehyde, permeabilized using 0.2 % Triton X-100 and blocked in 10 % normal Goat Serum. The cells were then incubated with the antibody overnight at 4 °C. The secondary antibody was Alexa Fluor 488-conjugated AffiniPure Goat Anti-Rabbit IgG(H+L).