

Datasheet for ABIN7170573  
**anti-S1PR3 antibody (AA 303-378)**[Go to Product page](#)

## 3 Images

## Overview

Quantity:	100 µg
Target:	S1PR3
Binding Specificity:	AA 303-378
Reactivity:	Human
Host:	Rabbit
Clonality:	Polyclonal
Conjugate:	This S1PR3 antibody is un-conjugated
Application:	ELISA, Immunohistochemistry (IHC), Immunofluorescence (IF)

## Product Details

Immunogen:	Recombinant Human Sphingosine 1-phosphate receptor 3 protein (303-378AA)
Isotype:	IgG
Cross-Reactivity:	Human
Purification:	>95%, Protein G purified

## Target Details

Target:	S1PR3
Alternative Name:	S1PR3 ( <a href="#">S1PR3 Products</a> )
Background:	Background: Receptor for the lysosphingolipid sphingosine 1-phosphate (S1P). S1P is a bioactive lysophospholipid that elicits diverse physiological effect on most types of cells and

## Target Details

tissues. When expressed in rat HTC4 hepatoma cells, is capable of mediating S1P-induced cell proliferation and suppression of apoptosis.

Aliases: EDG 3 antibody, EDG3 antibody, Endothelial differentiation G protein coupled receptor 3 antibody, Endothelial differentiation G-protein coupled receptor 3 antibody, Endothelial differentiation gene 3 antibody, Endothelial differentiation sphingolipid G protein coupled receptor 3 antibody, FLJ37523 antibody, FLJ93220 antibody, G protein coupled receptor endothelial differentiation gene 3 antibody, LPB 3 antibody, LPB3 antibody, MGC71696 antibody, OTTHUMP00000215691 antibody, S1P receptor 3 antibody, S1P receptor Edg 3 antibody, S1P receptor Edg-3 antibody, S1P receptor EDG3 antibody, S1P3 antibody, S1pr3 antibody, S1PR3\_HUMAN antibody, Sphingosine 1 phosphate receptor 3 antibody, Sphingosine 1 phosphate receptor Edg 3 antibody, Sphingosine 1 phosphate receptor Edg3 antibody, Sphingosine 1-phosphate receptor 3 antibody, Sphingosine 1-phosphate receptor Edg-3 antibody

UniProt: [Q99500](#)

## Application Details

Application Notes: Recommended dilution: IHC:1:500-1:1000, IF:1:50-1:500,

Restrictions: For Research Use only

## Handling

Format: Liquid

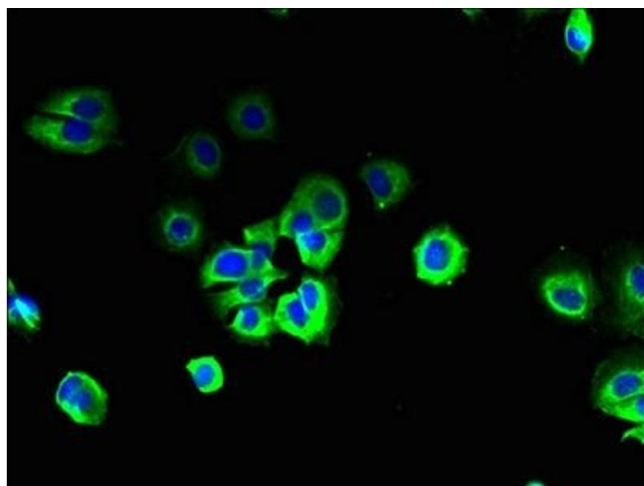
Buffer: Preservative: 0.03 % Proclin 300  
Constituents: 50 % Glycerol, 0.01M PBS, PH 7.4

Preservative: ProClin

Precaution of Use: This product contains ProClin: a POISONOUS AND HAZARDOUS SUBSTANCE which should be handled by trained staff only.

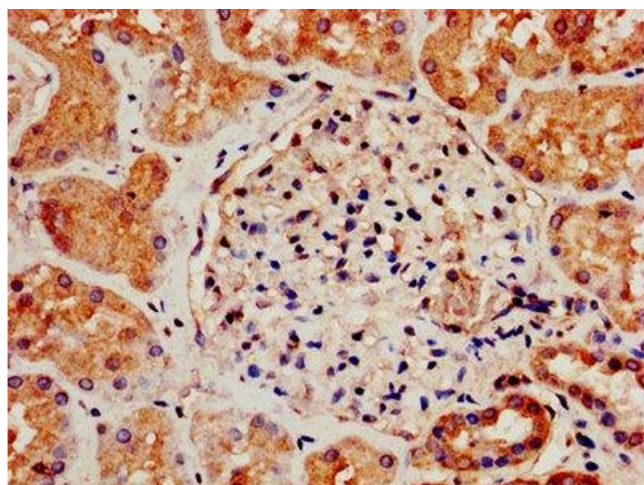
Storage: -20 °C,-80 °C

Storage Comment: Upon receipt, store at -20°C or -80°C. Avoid repeated freeze.



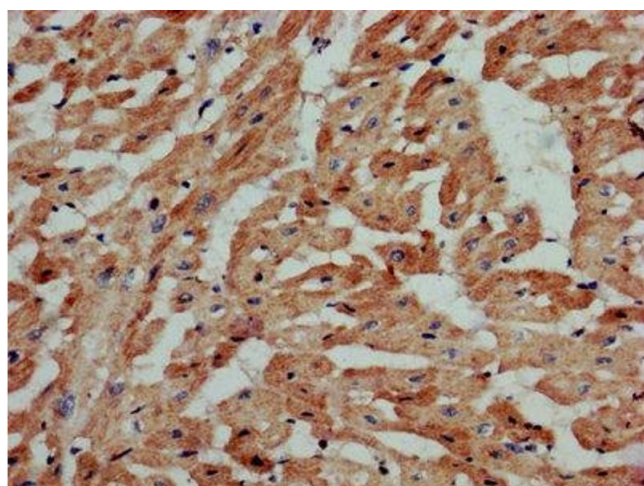
#### Immunofluorescence

**Image 1.** Immunofluorescent analysis of MCF-7 cells using ABIN7170573 at dilution of 1:100 and Alexa Fluor 488-conjugated AffiniPure Goat Anti-Rabbit IgG(H+L)



#### Immunohistochemistry

**Image 2.** IHC image of ABIN7170573 diluted at 1:800 and staining in paraffin-embedded human kidney tissue performed on a Leica Bond™ system. After dewaxing and hydration, antigen retrieval was mediated by high pressure in a citrate buffer (pH 6.0). Section was blocked with 10% normal goat serum 30min at RT. Then primary antibody (1% BSA) was incubated at 4°C overnight. The primary is detected by a biotinylated secondary antibody and visualized using an HRP conjugated SP system.



#### Immunohistochemistry

**Image 3.** IHC image of ABIN7170573 diluted at 1:800 and staining in paraffin-embedded human heart tissue performed on a Leica Bond™ system. After dewaxing and hydration, antigen retrieval was mediated by high pressure in a citrate buffer (pH 6.0). Section was blocked with 10% normal goat serum 30min at RT. Then primary antibody (1% BSA) was incubated at 4°C overnight. The primary is detected by a biotinylated secondary antibody and visualized using an HRP conjugated SP system.