

Datasheet for ABIN7170577
anti-S1PR5 antibody (AA 309-398)[Go to Product page](#)

2 Images

Overview

Quantity:	100 µg
Target:	S1PR5
Binding Specificity:	AA 309-398
Reactivity:	Human
Host:	Rabbit
Clonality:	Polyclonal
Conjugate:	This S1PR5 antibody is un-conjugated
Application:	ELISA, Western Blotting (WB), Immunofluorescence (IF)

Product Details

Immunogen:	Recombinant Human Sphingosine 1-phosphate receptor 5 protein (309-398AA)
Isotype:	IgG
Cross-Reactivity:	Human, Mouse
Purification:	>95%, Protein G purified

Target Details

Target:	S1PR5
Alternative Name:	S1PR5 (S1PR5 Products)
Background:	Background: Receptor for the lysosphingolipid sphingosine 1-phosphate (S1P). S1P is a bioactive lysophospholipid that elicits diverse physiological effect on most types of cells and

Target Details

tissues. Is coupled to both the G(i/o)alpha and G(12) subclass of heteromeric G-proteins (By similarity). May play a regulatory role in the transformation of radial glial cells into astrocytes and may affect proliferative activity of these cells.

Aliases: EDG 8 antibody, EDG8 S1P receptor antibody, Endothelial differentiation G protein coupled receptor 8 antibody, Endothelial differentiation G-protein-coupled receptor 8 antibody, Endothelial Differentiation Gene 8 antibody, Endothelial differentiation sphingolipid G protein coupled receptor 8 antibody, S1P receptor 5 antibody, S1P receptor Edg 8 antibody, S1P receptor Edg-8 antibody, S1P receptor Edg8 antibody, S1P5 antibody, S1PR5 antibody, S1PR5_HUMAN antibody, Sphingosine 1 Phosphate Receptor 5 antibody, Sphingosine 1 phosphate receptor Edg 8 antibody, Sphingosine 1 phosphate receptor Edg8 antibody, Sphingosine 1-phosphate receptor 5 antibody, Sphingosine 1-phosphate receptor Edg-8 antibody, SPPR 1 antibody, SPPR 2 antibody, SPPR1 antibody, SPPR2 antibody

UniProt: [Q9H228](#)

Application Details

Application Notes: Recommended dilution: WB:1:500-1:5000, IF:1:50-1:200,

Restrictions: For Research Use only

Handling

Format: Liquid

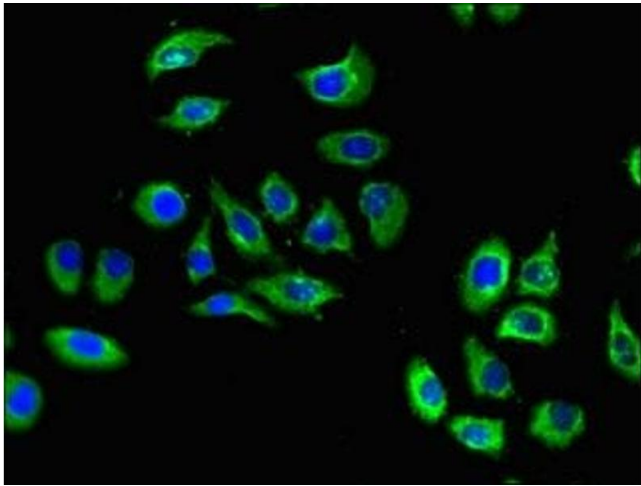
Buffer: Preservative: 0.03 % Proclin 300
Constituents: 50 % Glycerol, 0.01M PBS, PH 7.4

Preservative: ProClin

Precaution of Use: This product contains ProClin: a POISONOUS AND HAZARDOUS SUBSTANCE which should be handled by trained staff only.

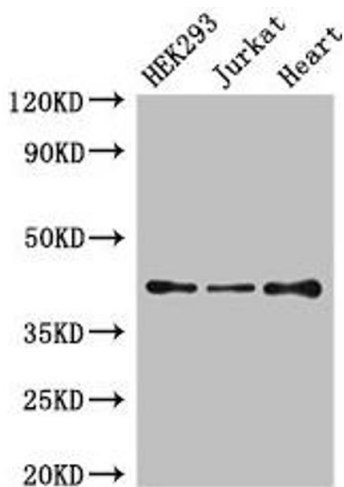
Storage: -20 °C,-80 °C

Storage Comment: Upon receipt, store at -20°C or -80°C. Avoid repeated freeze.



Immunofluorescence

Image 1. Immunofluorescent analysis of A549 cells using ABIN7170577 at dilution of 1:100 and Alexa Fluor 488-conjugated AffiniPure Goat Anti-Rabbit IgG(H+L)



Western Blotting

Image 2. Western Blot Positive WB detected in: HEK293 whole cell lysate, Jurkat whole cell lysate, Mouse heart tissue All lanes: S1PR5 antibody at 4 µg/mL Secondary Goat polyclonal to rabbit IgG at 1/50000 dilution Predicted band size: 42, 33 kDa Observed band size: 42 kDa