

Datasheet for ABIN7170587

anti-SKA1 antibody (AA 61-134)[Go to Product page](#)**1** Image

Overview

Quantity:	100 µg
Target:	SKA1
Binding Specificity:	AA 61-134
Reactivity:	Human
Host:	Rabbit
Clonality:	Polyclonal
Conjugate:	This SKA1 antibody is un-conjugated
Application:	ELISA, Immunohistochemistry (IHC)

Product Details

Immunogen:	Recombinant Human Spindle and kinetochore-associated protein 1 protein (61-134AA)
Isotype:	IgG
Cross-Reactivity:	Human
Purification:	>95%, Protein G purified

Target Details

Target:	SKA1
Alternative Name:	SKA1 (SKA1 Products)
Background:	Background: Component of the SKA1 complex, a microtubule-binding subcomplex of the outer kinetochore that is essential for proper chromosome segregation (PubMed:17093495,

Target Details

PubMed:19289083, PubMed:23085020). Required for timely anaphase onset during mitosis, when chromosomes undergo bipolar attachment on spindle microtubules leading to silencing of the spindle checkpoint (PubMed:17093495). The SKA1 complex is a direct component of the kinetochore-microtubule interface and directly associates with microtubules as oligomeric assemblies (PubMed:19289083). The complex facilitates the processive movement of microspheres along a microtubule in a depolymerization-coupled manner (PubMed:19289083). Affinity for microtubules is synergistically enhanced in the presence of the ndc-80 complex and may allow the ndc-80 complex to track depolymerizing microtubules (PubMed:23085020). In the complex, it mediates the interaction with microtubules (PubMed:19289083, PubMed:23085020).

Aliases: 2810433K01Rik antibody, AV117428 antibody, C18orf24 antibody, MGC10200 antibody, Ska1 antibody, SKA1_HUMAN antibody, Spindle and kinetochore associated complex subunit 1 antibody, Spindle and kinetochore associated protein 1 antibody, Spindle and kinetochore-associated protein 1 antibody, Spindle and KT (kinetochore) associated 1 antibody, Spindle and KT associated 1 antibody

UniProt: [Q96BD8](#)

Pathways: [M Phase](#)

Application Details

Application Notes: Recommended dilution: IHC:1:200-1:500,

Restrictions: For Research Use only

Handling

Format: Liquid

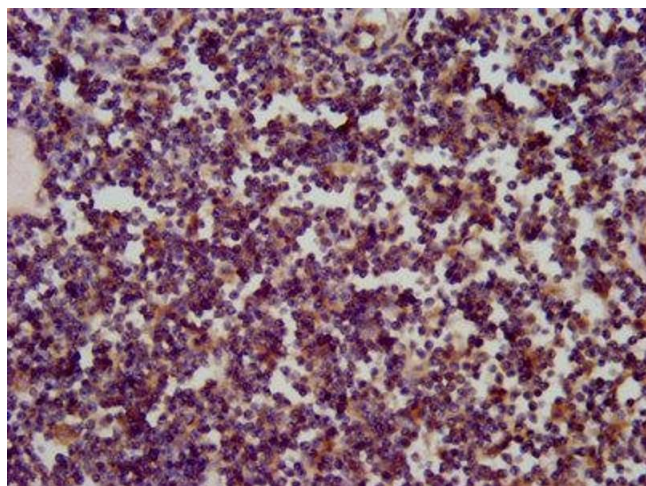
Buffer: Preservative: 0.03 % Proclin 300
Constituents: 50 % Glycerol, 0.01M PBS, pH 7.4

Preservative: ProClin

Precaution of Use: This product contains ProClin: a POISONOUS AND HAZARDOUS SUBSTANCE which should be handled by trained staff only.

Storage: -20 °C,-80 °C

Storage Comment: Upon receipt, store at -20°C or -80°C. Avoid repeated freeze.



Immunohistochemistry

Image 1. IHC image of ABIN7170587 diluted at 1:200 and staining in paraffin-embedded human lymph node tissue performed on a Leica Bond™ system. After dewaxing and hydration, antigen retrieval was mediated by high pressure in a citrate buffer (pH 6.0). Section was blocked with 10% normal goat serum 30min at RT. Then primary antibody (1% BSA) was incubated at 4°C overnight. The primary is detected by a biotinylated secondary antibody and visualized using an HRP conjugated SP system.