



[Go to Product page](#)

Datasheet for ABIN7170623
anti-SF3B3 antibody (AA 948-1217)

2 Images

Overview

Quantity:	100 µL
Target:	SF3B3
Binding Specificity:	AA 948-1217
Reactivity:	Human
Host:	Rabbit
Clonality:	Polyclonal
Conjugate:	This SF3B3 antibody is un-conjugated
Application:	ELISA, Immunohistochemistry (IHC)

Product Details

Immunogen:	Recombinant Human Splicing factor 3B subunit 3 protein (948-1217AA)
Isotype:	IgG
Cross-Reactivity:	Human
Purification:	Antigen Affinity Purified

Target Details

Target:	SF3B3
Alternative Name:	SF3B3 (SF3B3 Products)
Background:	Background: Subunit of the splicing factor SF3B required for '\A\' complex assembly formed by the stable binding of U2 snRNP to the branchpoint sequence (BPS) in pre-mRNA. Sequence

Target Details

independent binding of SF3A/SF3B complex upstream of the branch site is essential, it may anchor U2 snRNP to the pre-mRNA. May also be involved in the assembly of the 'E' complex. Belongs also to the minor U12-dependent spliceosome, which is involved in the splicing of rare class of nuclear pre-mRNA intron.

Aliases: KIAA0017 antibody, Pre mRNA splicing factor SF3b 130 kDa subunit antibody, Pre-mRNA-splicing factor SF3b 130 kDa subunit antibody, RSE1 antibody, SAP 130 antibody, SAP130 antibody, SF3b130 antibody, SF3B3 antibody, SF3B3_HUMAN antibody, Spliceosome associated protein 130 antibody, Spliceosome-associated protein 130 antibody, Splicing factor 3b subunit 3 130kD antibody, Splicing factor 3B subunit 3 antibody, STAF130 antibody

UniProt: [Q15393](#)

Application Details

Application Notes: Recommended dilution: IHC:1:20-1:200,

Restrictions: For Research Use only

Handling

Format: Liquid

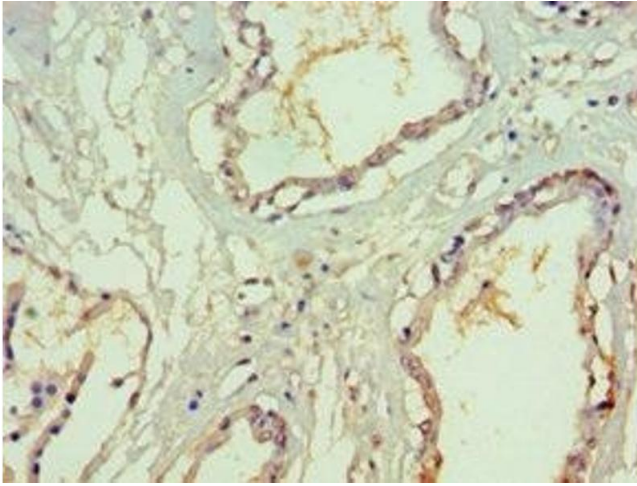
Buffer: PBS with 0.02 % sodium azide, 50 % glycerol, pH 7.3.

Preservative: Sodium azide

Precaution of Use: This product contains Sodium azide: a POISONOUS AND HAZARDOUS SUBSTANCE which should be handled by trained staff only.

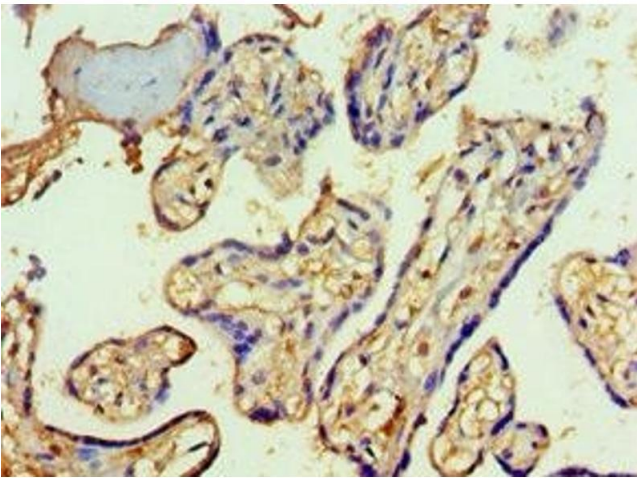
Storage: -20 °C,-80 °C

Storage Comment: Upon receipt, store at -20°C or -80°C. Avoid repeated freeze.



Immunohistochemistry

Image 1. Immunohistochemistry of paraffin-embedded human prostate tissue using ABIN7170623 at dilution of 1:100



Immunohistochemistry

Image 2. Immunohistochemistry of paraffin-embedded human placenta tissue using ABIN7170623 at dilution of 1:100