



Datasheet for ABIN7170629  
**anti-RBM17 antibody (AA 1-240)**



[Go to Product page](#)

3 Images

Overview

Quantity:	100 µL
Target:	RBM17
Binding Specificity:	AA 1-240
Reactivity:	Human
Host:	Rabbit
Clonality:	Polyclonal
Conjugate:	This RBM17 antibody is un-conjugated
Application:	Western Blotting (WB), Immunohistochemistry (IHC), ELISA

Product Details

Immunogen:	Recombinant Human Splicing factor 45 protein (1-240AA)
Isotype:	IgG
Cross-Reactivity:	Human
Purification:	Antigen Affinity Purified

Target Details

Target:	RBM17
Alternative Name:	RBM17 ( <a href="#">RBM17 Products</a> )
Background:	Background: Splice factor that binds to the single-stranded 3'AG at the exon/intron border and promotes its utilization in the second catalytic step. Involved in the regulation of alternative

## Target Details

---

splicing and the utilization of cryptic splice sites. Promotes the utilization of a cryptic splice site created by the beta-110 mutation in the HBB gene. The resulting frameshift leads to sickle cell anemia.

Aliases: 45 kDa-splicing factor antibody, RBM 17 antibody, Rbm17 antibody, RNA binding motif protein 17 antibody, RNA-binding motif protein 17 antibody, SPF 45 antibody, SPF45 antibody, SPF45\_HUMAN antibody, Splicing factor (45 kD) antibody, Splicing factor (45kD) antibody, Splicing factor 45 antibody, Splicing factor 45 kDa antibody, Splicing factor 45 kDa antibody

UniProt: [Q96I25](#)

## Application Details

---

Application Notes: Recommended dilution: WB:1:1000-1:5000, IHC:1:20-1:200,

Restrictions: For Research Use only

## Handling

---

Format: Liquid

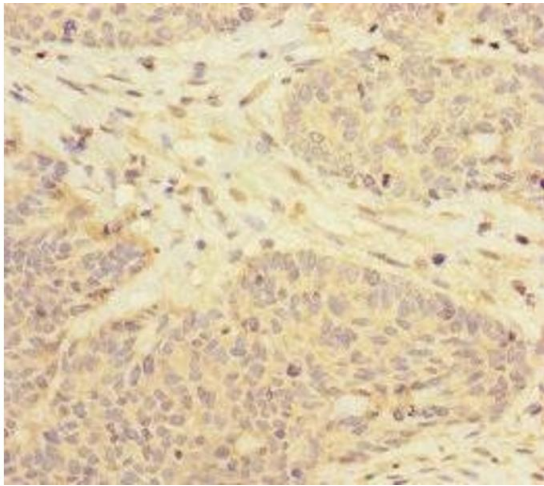
Buffer: PBS with 0.02 % sodium azide, 50 % glycerol, pH 7.3.

Preservative: Sodium azide

Precaution of Use: This product contains Sodium azide: a POISONOUS AND HAZARDOUS SUBSTANCE which should be handled by trained staff only.

Storage: -20 °C,-80 °C

Storage Comment: Upon receipt, store at -20°C or -80°C. Avoid repeated freeze.



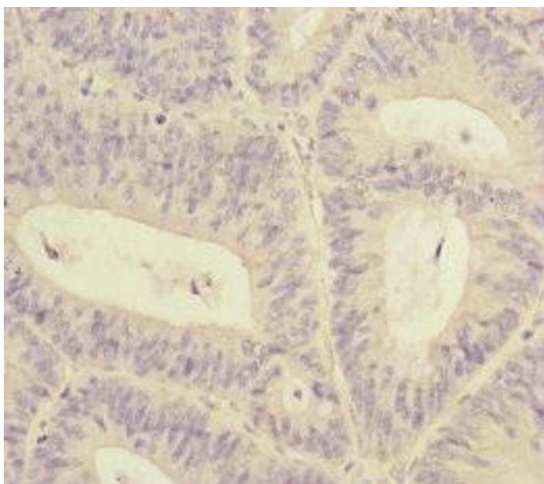
### Immunohistochemistry

**Image 1.** Immunohistochemistry of paraffin-embedded human ovarian cancer using ABIN7170629 at dilution of 1:100



### Western Blotting

**Image 2.** Western blot All lanes: RBM17 antibody at 2.35  $\mu$ g/mL + U251 whole cell lysate Secondary Goat polyclonal to rabbit IgG at 1/10000 dilution Predicted band size: 45 kDa Observed band size: 45 kDa



### Immunohistochemistry

**Image 3.** Immunohistochemistry of paraffin-embedded human colon cancer using ABIN7170629 at dilution of 1:100