



[Go to Product page](#)

Datasheet for ABIN7170672
anti-SLA antibody (AA 2-276)

4 Images

Overview

Quantity:	100 µg
Target:	SLA
Binding Specificity:	AA 2-276
Reactivity:	Human
Host:	Rabbit
Clonality:	Polyclonal
Conjugate:	This SLA antibody is un-conjugated
Application:	Western Blotting (WB), ELISA, Immunohistochemistry (IHC), Immunofluorescence (IF)

Product Details

Immunogen:	Recombinant Human Src-like-adapter protein (2-276AA)
Isotype:	IgG
Cross-Reactivity:	Human
Purification:	>95%, Protein G purified

Target Details

Target:	SLA
Alternative Name:	SLA (SLA Products)
Background:	Background: Adapter protein, which negatively regulates T-cell receptor (TCR) signaling. Inhibits T-cell antigen-receptor induced activation of nuclear factor of activated T-cells. Involved in the

Target Details

negative regulation of positive selection and mitosis of T-cells. May act by linking signaling proteins such as ZAP70 with CBL, leading to a CBL dependent degradation of signaling proteins.

Aliases: hSLAP antibody, SLA 1 antibody, sla antibody, SLA1 antibody, SLAP 1 antibody, SLAP antibody, SLAP-1 antibody, SLAP1 antibody, SLAP1_HUMAN antibody, Src like adapter antibody, Src like adapter protein 1 antibody, Src like adaptor antibody, SRC-like-adapter antibody, Src-like-adapter protein 1 antibody

UniProt: [Q13239](#)

Application Details

Application Notes: Recommended dilution: WB:1:500-1:2000, IHC:1:20-1:200, IF:1:50-1:200,

Restrictions: For Research Use only

Handling

Format: Liquid

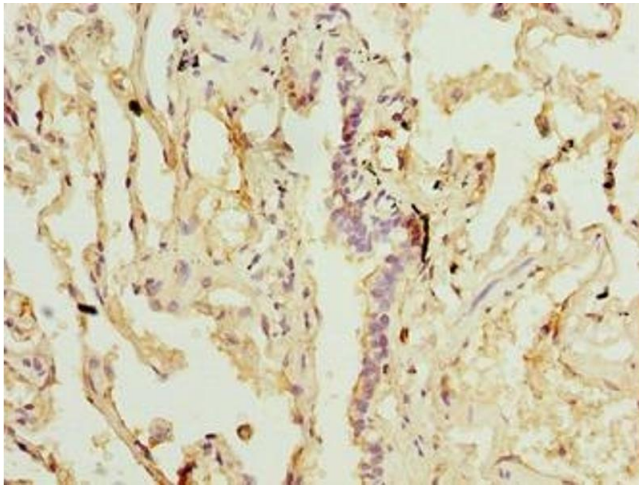
Buffer: Preservative: 0.03 % Proclin 300
Constituents: 50 % Glycerol, 0.01M PBS, PH 7.4

Preservative: ProClin

Precaution of Use: This product contains ProClin: a POISONOUS AND HAZARDOUS SUBSTANCE which should be handled by trained staff only.

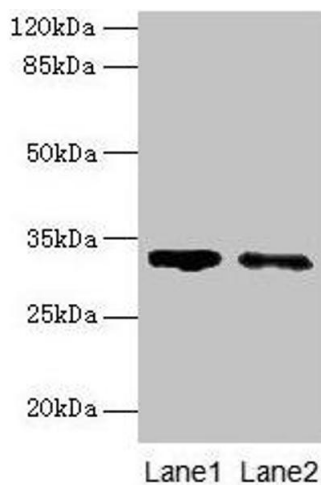
Storage: -20 °C,-80 °C

Storage Comment: Upon receipt, store at -20°C or -80°C. Avoid repeated freeze.



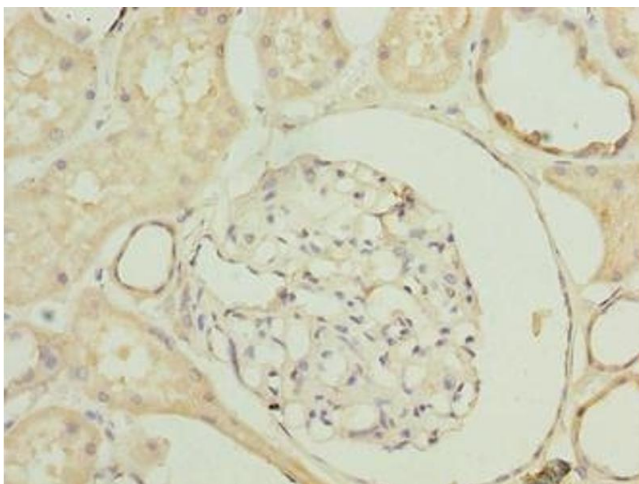
Immunohistochemistry

Image 1. Immunohistochemistry of paraffin-embedded human lung tissue using ABIN7170672 at dilution of 1:100



Western Blotting

Image 2. Western blot All lanes: SLA antibody at 5 µg/mL
Lane 1: 293T whole cell lysate Lane 2: A431 whole cell lysate
Secondary Goat polyclonal to rabbit IgG at 1/10000 dilution
Predicted band size: 32, 20, 34, 28, 36 kDa
Observed band size: 32 kDa



Immunohistochemistry

Image 3. Immunohistochemistry of paraffin-embedded human kidney tissue using ABIN7170672 at dilution of 1:100

Please check the [product details page](#) for more images. Overall 4 images are available for ABIN7170672.