

Datasheet for ABIN7170677  
**anti-SRPK2 antibody (AA 471-688)**



[Go to Product page](#)

2 Images

## Overview

Quantity:	100 µL
Target:	SRPK2
Binding Specificity:	AA 471-688
Reactivity:	Human
Host:	Rabbit
Clonality:	Polyclonal
Conjugate:	This SRPK2 antibody is un-conjugated
Application:	Western Blotting (WB), ELISA, Immunohistochemistry (IHC)

## Product Details

Immunogen:	Recombinant Human SRSF protein kinase 2 protein (471-688AA)
Isotype:	IgG
Cross-Reactivity:	Human
Purification:	Antigen Affinity Purified

## Target Details

Target:	SRPK2
Alternative Name:	SRPK2 ( <a href="#">SRPK2 Products</a> )
Background:	Background: Serine/arginine-rich protein-specific kinase which specifically phosphorylates its substrates at serine residues located in regions rich in arginine/serine dipeptides, known as RS

## Target Details

domains and is involved in the phosphorylation of SR splicing factors and the regulation of splicing. Promotes neuronal apoptosis by up-regulating cyclin-D1 (CCND1) expression. This is done by the phosphorylation of SRSF2, leading to the suppression of p53/TP53 phosphorylation thereby relieving the repressive effect of p53/TP53 on cyclin-D1 (CCND1) expression. Phosphorylates ACIN1, and redistributes it from the nuclear speckles to the nucleoplasm, resulting in cyclin A1 but not cyclin A2 up-regulation. Plays an essential role in spliceosomal B complex formation via the phosphorylation of DDX23/PRP28. Can mediate hepatitis B virus (HBV) core protein phosphorylation. Plays a negative role in the regulation of HBV replication through a mechanism not involving the phosphorylation of the core protein but by reducing the packaging efficiency of the pregenomic RNA (pgRNA) without affecting the formation of the viral core particles.

Aliases: Human serine kinase SRPK2 mRNA, complete cds antibody, Serine kinase SRPK2 antibody, Serine/arginine rich protein specific kinase 2 antibody, Serine/arginine-rich protein-specific kinase 2 antibody, Serine/threonine protein kinase SRPK2 antibody, SFRS protein kinase 2 antibody, SFRSK2 antibody, SR protein specific kinase 2 antibody, SR-protein-specific kinase 2 antibody, SRPK2 antibody, SRPK2\_HUMAN antibody, SRSF protein kinase 2 C-terminal antibody

UniProt: [P78362](#)

Pathways: [Ribonucleoprotein Complex Subunit Organization](#)

## Application Details

Application Notes: Recommended dilution: WB:1:500-1:2000, IHC:1:20-1:200,

Restrictions: For Research Use only

## Handling

Format: Liquid

Buffer: Preservative: 0.03 % Proclin 300  
Constituents: 50 % Glycerol, 0.01M PBS, pH 7.4

Preservative: ProClin

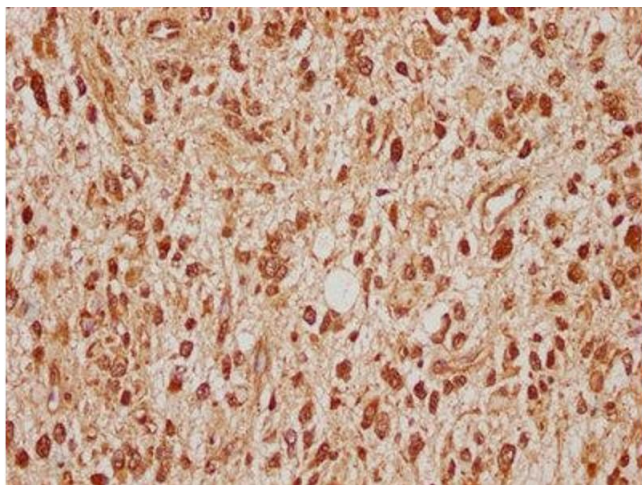
Precaution of Use: This product contains ProClin: a POISONOUS AND HAZARDOUS SUBSTANCE which should be handled by trained staff only.

Storage: -20 °C,-80 °C

## Handling

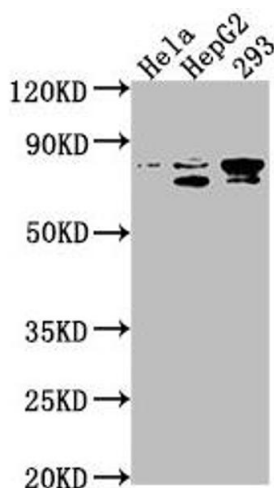
Storage Comment: Upon receipt, store at -20°C or -80°C. Avoid repeated freeze.

## Images



### Immunohistochemistry

**Image 1.** IHC image of ABIN7170677 diluted at 1:100 and staining in paraffin-embedded human glioma cancer performed on a Leica Bond™ system. After dewaxing and hydration, antigen retrieval was mediated by high pressure in a citrate buffer (pH 6.0). Section was blocked with 10 % normal goat serum 30 min at RT. Then primary antibody (1 % BSA) was incubated at 4 °C overnight. The primary is detected by a biotinylated secondary antibody and visualized using an HRP conjugated SP system.



### Western Blotting

**Image 2.** Western Blot Positive WB detected in: HeLa whole cell lysate, HepG2 whole cell lysate, 293 whole cell lysate All lanes: SRPK2 antibody at 1:1000 Secondary Goat polyclonal to rabbit IgG at 1/50000 dilution Predicted band size: 78, 80 kDa Observed band size: 78 kDa